



# Lexmark C522n

## BUYERS LABORATORY INC. Lab Test Report

A Comprehensive BLI Laboratory Evaluation

### Lexmark C522n 20 PPM Color Laser Printer



Test duration: Two months, including a 22,500-impression durability test.



Reliability .....	Excellent
Administrative Utilities .....	Excellent
Feedback to Workstations .....	Very Good
Ease of Network Setup .....	Excellent
Print Drivers .....	Excellent
Applications Compatibility .....	Excellent
Color Print Quality .....	Very Good
Black Print Quality .....	Excellent
Color Print Productivity .....	Very Good
Black Print Productivity .....	Very Good
Ease of Use .....	Excellent
Feature Set .....	Very Good
Toner Yield .....	Excellent
Cost per Page (Color/Black) .....	29.857¢/3.042¢
Value .....	Very Good

Manufacturer's recommended monthly volume: Up to 45,000 impressions.  
 BLI's recommended monthly volume for optimum performance: Up to 5,000 impressions.  
 More information on the C522n is available through bliQ ([www.buyerslab.com/bliQ](http://www.buyerslab.com/bliQ)).

## BLI RECOMMENDATION

### ALSO INSIDE

- ▶ Test Procedures
- ▶ Specifications
- ▶ Certificate of Reliability

Ratings scale:  
 Excellent, Very Good, Good, Fair and Poor.

Designed as an inexpensive entry-level color device for use by individual users and small workgroups, the Lexmark C522n is the lowest-priced model in this speed range gave an excellent overall performance in BLI's two-month laboratory test. The C522n demonstrated perfect reliability, completing its 22,500-impression test without any misfeeds or malfunctions. Accommodating up to legal-size paper, the C522n offers excellent ease of use from its well designed control panel to its extremely simple set up and installation procedure. Lexmark is also very easy to manage on the network with excellent administrative utilities.

Further, the C522n produces consistent high-quality color output. Using four-drum, single-pass technology to output at 22 ppm in both black and color, the Lexmark C522n features 4800 Color Quality (4800CQ) resolution to produce high-quality color output at rated speed (The C522n also offers true 1200-x-

LABTEST



1200-dpi resolution, but print speed drops to approximately half the rated engine speed). Business graphics output was characterized by vibrant colors in graphs and charts and photographic output showed realistic colors and natural-looking skin tones. Black output was also excellent overall. BLI test technicians cited crisp, clearly formed characters, with no toner spray visible.

Based on its admirable performance in BLI's tests, BLI recommends the Lexmark C522n for personal users and small workgroups with monthly volumes of up to 5,000 impressions.

## PERFORMANCE OVERVIEW

*+ , – and ○ represent positive, negative and neutral attributes, respectively.*

### RELIABILITY

**EXCELLENT**

+ The Lexmark C522n is certified highly reliable by BLI, completing a 32,500-impression durability test without experiencing a single misfeed and with no service calls required.

### ADMINISTRATIVE UTILITIES

**EXCELLENT**

+ A key strength of the Lexmark C522n is the MarkVision Professional utility, which enables administrators to manage groups of devices on the network. One of the most thorough and flexible such utilities BLI has evaluated to date, MarkVision makes setup on the network easy, and can identify and enables monitoring of all Lexmark printers, as well as non-Lexmark devices, on a network. MarkVision Professional also provides extensive real-time device status and print job status monitoring capabilities when a client module is installed at the workstation or limited real-time feedback when accessed via a Web browser. MarkVision Professional can also be used to take an inventory of all printers on the network, record all printing data and export that data to a database or spreadsheet.

+ MarkVision Messenger, a component of MarkVision Professional, allows administrators to receive e-mail messages based on errors or alerts.

**FEEDBACK TO WORKSTATIONS****VERY GOOD**

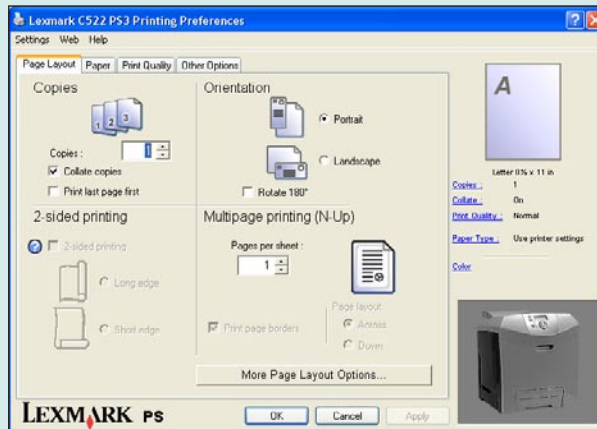
- + A status window is accessible through the PCL or PostScript print drivers. Very good feedback to PC workstations is provided via pop-up messages and icon alerts for a variety of warning and error conditions, provided the status window has been enabled in the print driver. It can be configured to send a pop-up notification to the PC whenever a print job is sent, only when a device or print job error occurs, when there is a warning condition or to run minimized, in which case its icon on the taskbar will flash until the window is opened by the user.
- + In addition, users may configure e-mail alerts via MarkVision Professional to be sent to designated individuals when specified conditions occur. Users can also obtain detailed device status information when using the MarkVision Professional network management utility (when the administrator has given privileges to the user) or by accessing the C522n's print server via a Web browser.

**EASE OF NETWORK SETUP****EXCELLENT**

- + Setup and installation of the drivers was easy thanks to the auto-install feature, which automatically creates the Lexmark bidirectional port and will have users up and running in minutes. In addition, the drivers automatically detect optional features installed on the Lexmark C522n.

**PRINT DRIVERS****EXCELLENT**

- + The Lexmark C522n ships with three print drivers (PostScript 3, PCL 6 for black printing and PCL 6 for color printing) for Windows 98, NT 4.0, Me, 2000, XP Windows and Server 2003, as well as Mac OS X v10.2+ operating systems. The drivers are well laid out and easy to use on the Windows 2000 platform tested. In addition, the PCL and PostScript drivers are similar in appearance and layout, which increases ease of use for those who use both drivers.
- + The drivers have a Job Summary feature that allows the user to view all of the driver selections before the job is spooled to the print queue or printer. This feature allows the user to confirm all of the print selections before printing the job, which could save toner and paper wasted on incorrectly printed documents.



PostScript Print Driver Page Layout Tab

**APPLICATIONS COMPATIBILITY**

**EXCELLENT**

+ No problems were experienced with any of the test files used in the applications compatibility tests. Units are tested for compatibility on Windows XP platforms with Microsoft Word 2000, Microsoft PowerPoint 2000, Microsoft Excel 2000, Adobe PageMaker 7.0, Adobe Photoshop 6.0 and Adobe Acrobat 6.0 using 25 application test files, which contain text, graphics, halftone images, tables, etc., enabling BLI technicians to evaluate memory usage, file processing, font rendering and grayscale capability.

**IMAGE QUALITY**

**Color Print Quality**

**VERY GOOD**

- + Photographic images were rated “Very Good.” BLI technicians noted realistic colors and natural-looking skin tones.
- + Business graphics were excellent, with vibrant and eye-catching colors in graphs and charts.
- Although a change and a shift in the color gamut was detected by BLI’s instruments over the course of the test, no change in color production was noticeable to the naked eye.

**Black Print Quality**

**EXCELLENT**

+ Black output produced by the Lexmark C522n was also very good; text was crisp and cleanly formed, even at 6-point font sizes. Line art was also produced very well; the lines forming the circumference of circles were of



consistent line weight and diagonal lines were clean and straight, with only very minimal stair-stepping evident. Halftones were visible over an excellent range and toner coverage was only slightly inconsistent within dot-fill areas.

## PRODUCTIVITY

### Color Print Productivity

**VERY GOOD**

- + The C522n demonstrated well-above-average overall color print efficiency in simplex mode and competitive overall color print efficiency duplex mode when printing from the PostScript driver.
- + The C522n completed BLI's 19-page job stream at 70.52 percent of its rated color speed when printing from the PostScript driver (which is well above average) and 77.28 percent of its rated color speed when printing from the PCL driver (which is above average).
- First-print times for the PowerPoint, TIFF and JPEG file used in testing are competitive to faster than average when compared to the average for printers in this class.

### Black Print Productivity

**VERY GOOD**

- + The C522n demonstrated overall black print efficiency that is slightly above average in simplex mode when printing from the PostScript driver. Overall black duplex print efficiency from the PostScript driver is competitive.
- + The C522n completed BLI's 19-page job stream at 87.5 percent of its rated black speed when printing from the PostScript driver and 88.02 percent of its rated black speed when printing from the PCL driver, both of which are well above average.
- First-print times for the Word and PDF files used in testing are competitive when compared to the average for printers in this class.

## EASE OF USE

**EXCELLENT**

- + The Lexmark C522n offers excellent overall ease of use. Two drivers are loaded by default using the Lexmark auto-install routine, the PostScript 3 (emulation) driver and the PCL (emulation) driver for black printing. A PCL driver for color printing may be installed using a separate installation if the user chooses to use PCL for color printing. Specifying job requirements from the well-designed print drivers was easy.



**Lexmark C522n Control Panel**

- + The Lexmark C522n offers clean and straightforward procedures for replacing the toner cartridges and drums. In addition, procedures for loading paper and removing misfeeds are very simple.
- + Ease of use is further enhanced by the control panel, consisting of a 160 x 64 pixel LCD display that shows text and graphics, intuitive navigation buttons and numeric keypad. The display provides graphical help messages that instruct users how to change consumables and remove misfeeds. It also has a job cancel button that allows user to select a specific job to cancel while leaving others in the queue.

## FEATURE SET

**VERY GOOD**

- While the standard and maximum paper capacities, at 250 and 750 sheets, respectively, are below average for products in this class, this is to be expected given the fact that the C522n is designed as a non-upgradeable entry-level device with a very low purchase price.
- + While the standard memory capacity of 128 MB is competitive, the maximum memory capacity of 640 MB is 61.32 percent higher than the average for products in this class.
- + The C522n includes a Coverage Estimator tool, which, when enabled through the control panel, allows users to determine the approximate coverage of each toner color on a page by page basis; the technology, exclusive to Lexmark, measures the amount of toner applied to the page through pixel counting and patch sensing.
- + Lexmark color printers incorporate a number of features to restrict unauthorized (and potentially costly) use of color. In addition to a black-only PCL 6 driver that ships along with the regular driver, which can be installed on selected workstations to ensure that the users of those workstations print only black pages, the C522n employs Color Print Permissions, which allows



an administrator to assign specific user IDs the ability to print color, thereby saving color toner usage by unauthorized color printing. Administrators can also configure the C522n as a monochrome-only printer by changing the configuration at the control panel and removing the color consumables from the device.

## SECURITY & ACCESSIBILITY

NOT RATED

- + 802.1x port authentication allows the printer to join networks that require authentication before allowing access. 802.1x port authentication can be used with the Wi-Fi Protected Access (WPA) feature of an optional internal wireless print server to provide WPA-Enterprise security support. Support for 802.1x requires the establishment of credentials for the printer, which can be managed by using the embedded Web Server of the printer.
- + IPsec provides authentication and encryption of communications at the network layer allowing all application and network communications over the IP protocol to be secure. IPsec can be set up between the printer and up to five hosts, using both IPv4 and IPv6.
- + The C522n is equipped with a security lock feature. When a lock compatible with most laptop computers is attached, the printer is locked and the metal plate and the system board cannot be removed.
- + The administrator can set up user and/or group accounts to limit access to the control panel, status utility and other device settings using MarkVision Professional. The administrator can lock or disable certain operator panel menus at the device to prevent users from making unauthorized changes to device configuration.

## TONER YIELD

EXCELLENT

- + While the tested yield for the color toner cartridges are above average, the tested yield for the black toner cartridge is the highest of products in this class tested to date.

## VALUE

VERY GOOD

- + The Lexmark C522n is priced 59.71 percent less than the average for competitive legal-size network-ready single-pass color printers with similar standard features (i.e., printers with a color speed from 15 to 25 ppm,



automatic duplexing and a standard PostScript driver). While the color cost per page is slightly higher than average, the C522n's cost per page for black output is competitive with the average for printers in this class.

LAB TEST





## SUPPORTING TEST DATA

### Test Environment

The product has been tested in BLI's 10,000-square-foot test lab, in an environment monitored by a Honeywell Temp/RH chart recorder, which replicates typical office conditions.

### Test Equipment

BLI's dedicated test network, consisting of Windows 2000 servers, Windows XP and 2000 workstations, 10/100BaseTX network switches and CAT5 cabling.

### Test Duration

Products are tested for two months, a portion of which consists of a durability test during which the product is run at its manufacturer-rated maximum monthly volume, with daily volumes evenly divided over the course of the test.

### Tested Configuration

Lexmark C522n base model.

### Test Procedures

The test methods and procedures employed by BLI in its lab testing include BLI's proprietary procedures and industry-standard test procedures. In addition to a number of proprietary test documents, BLI uses an industry standard Katun test original for evaluating black image quality and test suites from Quality Logic to evaluate applications compatibility. In addition to a visual observation, color print quality is tested using the ANSI standard IT8 Color Test Target, which is read using the Minolta CM503I Spectrophotometer, and samples are analyzed using the CIE XY Chromaticity Diagram. In addition, density of black and color output is measured using an X-Rite 428 Densitometer.

Buyers Laboratory Inc. • 20 Railroad Avenue • Hackensack, NJ 07601 • (201) 488-0404

Michael Danziger  
CEO

Lynn Nannariello  
Senior Editor

Tracie Hines  
Associate Editor

Pete Emory  
Manager of Laboratory Testing

Mark Lerch  
COO

Mark Young  
Senior Editor, Solutions

Marc Bussanich  
Technical Analyst

Pia Beddiges  
Manager of Field Testing

Anthony F. Polifrone  
Managing Director

Marlene Orr  
Printer Industry Analyst

George Mikolay  
Technical Analyst

Ken Nardone  
Technical Manager, Field Testing

Daria M. Hoffman  
Managing Editor

Ben Curry  
Research Editor

Camille Dendtler  
Research Manager

T. R. Patrick  
Art Director



## RELIABILITY

PMS/Malfunctions	Service Required	Meter Count (Impressions)	Impressions Between Service
Meter count (beginning of test)		0	
End of test period		22,500	
Total misfeeds/misfeed rate	0/Not applicable		
Total Service Calls	0		

## ADMINISTRATIVE UTILITIES

MarkVision Professional is a very flexible and powerful network management tool, which can identify Lexmark and non-Lexmark printers on a network; documentation on MarkVision Professional lists other printers with which the utility is compatible. Like other Lexmark devices, the C524 is designed to be alert-based, allowing the printer to report errors to the management utility when they occur so that users do not have to proactively request status information. At the workstation, end users may access MarkVision simply by using their Web browser or they may install a client module of MarkVision Professional. Capabilities of the powerful utility include the ability to limit access to the MarkVision Professional Web server by assigning privileges to individual users and/or groups, and to create sub-folders of the "All Devices" folder with filters attached (such as low on toner, so that any device reporting low toner will appear in that folder). MarkVision Professional 11.0 includes enhanced user authentication and security features to limit unauthorized access, such as print server password conformance for supported devices and Print Permissions Technology, which allows the administrator to restrict access to certain printer functions. Administrators can also use MarkVision Professional to disable printing from the USB flash drive on the control panel.

Every user has full rights to any of the settings available in the MarkVision Professional software until accounts are created. The administrator can create user or group accounts and assign user privileges. Once the administrator has created accounts, anyone accessing the MarkVision utility will be required to log on to the Web server.



The MarkVision server software also includes the MarkVision Messenger program, which allows the MarkVision server to run another application or send an e-mail message based on an event occurrence for a printer or group of printers. MarkVision Professional also has the ability to take an inventory of all printers on the network and record the data (the data may be customized by using filters), as well as export the data to a database or spreadsheet. The feature of exporting data may also be used in conjunction with MarkVision Professional's job accounting feature.

#### *Embedded Web page:*

Yes. The Lexmark C522n's embedded Web page allows the user or administrator to view printer status and remaining life of consumables (such as the percentage of maintenance kit life remaining); view/modify printer settings; print usage and configuration reports; and view basic printer information (such as memory and options installed).

#### *Consumables monitoring:*

Yes, via the embedded Web page, MarkVision Professional or the status window. The user or administrator can view remaining life of consumables, which includes a percentage of life remaining for the maintenance kit, the size and type of paper in each drawer and if there are any warnings for the paper drawers, indicated by "Empty" or "Low." From the embedded Web page, users can check if the print cartridge is "Empty" or "OK" only.

The screenshot displays the Lexmark C522n Embedded Web Page. At the top, it shows the Lexmark logo, a 'Refresh' button, and printer details: Lexmark C522, IP Address: 192.168.36.84, Location, and Contact. A small image of the printer is also visible. On the left is a navigation menu with options: Device Status (selected), Supplies Status, Configuration, Reports, Links & Index, and Order Supplies. The main content area is titled 'Device Status - Refresh' and contains the following information:

Cartridge Status:				
Cyan Cartridge	Yellow Cartridge	Magenta Cartridge	Black Cartridge	
Paper Input Tray:	Status:	Capacity:	Size:	Type:
Tray 1	OK	250	Letter	Plain Paper
Paper Output Bin:	Status:	Capacity:		
Standard Bin	OK	250		
Device Type:	Color Laser			
Speed:	Up to 20 Pages/Minute			

**Embedded Web Page - Device Status Screen**



## PRINT DRIVERS

## Lexmark C522n Print Driver Features

Features	PostScript 3
Auto Feature/Device Detection	Yes
Booklet Printing	Yes
Collate Sets	Yes
Max Paper Sources Per Job	1
Mirror Image	Yes
Negative Image	Yes
N-up Printing	2 to 16
Overlays	Yes
Paper Gauge	No
Print and Hold	Yes
Proof Print	Yes
Quantity Selection	Up to 999
Reduction/Enlargement	10% to 400%
Resolution Modes (dpi)	1200 x 1200; 4800CQ
Save Settings	No
Secure Print	No
Poster Printing	Yes
Watermarks/Custom Watermarks	Yes/Yes

*Send once/print many:*

Yes. When printing multiple collated sets—regardless of whether collate is selected from the driver or from the Windows print screen within an application—the file size is not increased. Output was properly collated.

## IMAGE QUALITY

### Color Print Quality

Business graphics	Excellent
Photographic images	Very Good

#### Comments:

Color print quality is tested using the ANSI standard IT8 Color Test Target with print samples taken at the beginning, midpoint and end of test period. The ANSI IT8 Color Test Target is read using the Minolta CM503I Spectrophotometer and samples are analyzed using the CIE XY Chromaticity Diagram. The Lexmark C524dtn uses an internal automatic color calibration.

The C524dtn produced a typical gamut for a laser-based color printer, with the range of colors produced showing a gradual increase in the areas of red and green over the duration of the test. The increase in size of the gamut also caused a shift in green toward yellow and a very slight shift in blue toward magenta. Although BLI's instruments detected a change in the gamut, the effect was not noticeable to the naked eye. When comparing a group of images printed at the beginning of the test to the same images printed at the end of the test period, the images looked nearly identical; BLI technicians noted a change in the colors produced would only be noticeable to a trained eye.

Colors in charts and graphs were vibrant and eye-catching and photographic images were characterized by natural-looking colors and realistic skin tones.

### Color Density Readings

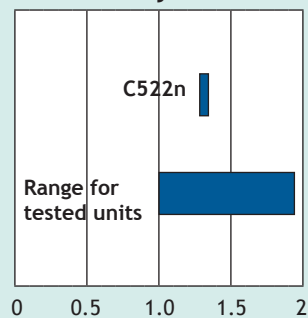
Color	Cyan	Magenta	Yellow
Print Density	1.04	1.15	1.065

*Density of a printed image with blocks of all solid colors (based on the average of two readings for each color).*

## Black Print Quality

Text	Excellent
Line art	Excellent
Halftone range	Excellent
Halftone fill	Very Good
Solids	Excellent

### Print density



### Black density:

1.28 to 1.35.

### Density for units in this class tested to date:

1.00 to 1.94.

Measurements are based on four readings corresponding to four different solid black locations on the output. The higher the density reading, the darker the image.

### Halftone range:

Grayscale is clearly visible from the 2% to 97% dot-fill levels, with distinct transitions between levels and consistent toner coverage within levels.

### Typical halftone range for color laser/LED printers:

From the 4% to 90% dot-fill levels.

## PRODUCTIVITY

### Tested First Print Times

#### PostScript 3 (4800CQ)

Windows XP	Word	PowerPoint	Photoshop	Acrobat	Photoshop
File Type	Text	Graphic/Text	Graphic	Graphic/Text	Color Graphic
File Extension	DOC	PPT	TIF	PDF	JPG
Pre-Raster File Size	114 KB	99 KB	20 MB	426 KB	245 KB
Post-Raster File Size	104 KB	136 KB	51.5 MB	771 KB	2.17 MB
First-Print Time	14.44	20.74	33.24	18.83	15.42

All files are printed using the Lexmark C524dtn PostScript driver at the default 4800CQ. First-print time indicates the time it took to RIP, image and deliver the first page of the test document to the output tray.



PostScript 3 (1200 x 1200 dpi)

Windows XP	Word	PowerPoint	Photoshop	Acrobat	Photoshop
File Type	Text	Graphic/Text	Graphic	Graphic/Text	Color Graphic
File Extension	DOC	PPT	TIF	PDF	JPG
Pre-Raster File Size	114 KB	99 KB	20 MB	426 KB	245 KB
Post-Raster File Size	104 KB	136 KB	51.5 MB	771 KB	2.17 MB
First-Print Time	54.12	70.20	81.45	60.64	31.03

All files are printed using the Lexmark C524dtn PostScript driver at 1200 x 1200 dpi. First-print time indicates the time it took to RIP, image and deliver the first page of the test document to the output tray.

PCL 6 (4800CQ)

Windows XP	Word	PowerPoint	Photoshop	Acrobat	Photoshop
File Type	Text	Graphic/Text	Graphic	Graphic/Text	Color Graphic
File Extension	DOC	PPT	TIF	PDF	JPG
Pre-Raster File Size	114 KB	99 KB	20 MB	426 KB	245 KB
Post-Raster File Size	17.7 KB	49.2 KB	580 KB	528 KB	744 KB
First-Print Time	14.06	20.43	21.27	20.93	24.24

All files are printed using the Lexmark C524dtn PostScript driver at the default 4800CQ. First-print time indicates the time it took to RIP, image and deliver the first page of the test document to the output tray.

PCL 6 (1200 x 1200 dpi)

Windows XP	Word	PowerPoint	Photoshop	Acrobat	Photoshop
File Type	Text	Graphic/Text	Graphic	Graphic/Text	Color Graphic
File Extension	DOC	PPT	TIF	PDF	JPG
Pre-Raster File Size	114 KB	99 KB	20 MB	426 KB	245 KB
Post-Raster File Size	17.7 KB	49.2 KB	580 KB	528 KB	744 KB
First-Print Time	57.89	90.74	68.58	65.62	75.12

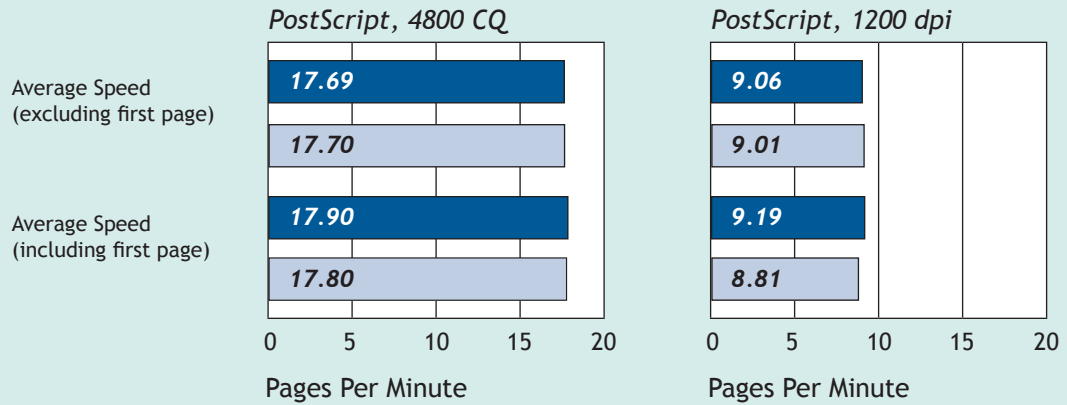
All files are printed using the Lexmark C524dtn PostScript driver at 1200 x 1200 dpi. First-print time indicates the time it took to RIP, image and deliver the first page of the test document to the output tray.

Lexmark's rated speed:  
20 ppm for black and color.

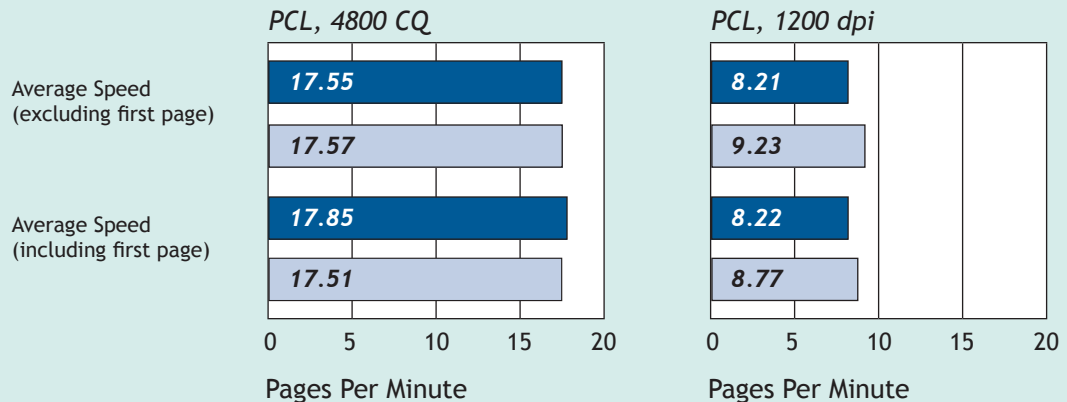
LABTEST



BLI'S Tested Print Speeds



Print speed is tested using BLI's Monochrome Test Original (with 6% page coverage) and BLI's Color Test Original with 10% coverage for each color (cyan, magenta, yellow and black). The test page is printed in a quantity equal to double the vendor's rated print speed for the device in each mode tested (e.g., if the vendor's rated print speed is 20 ppm, 40 pages are printed). The Lexmark C522n's print speeds were tested at the default 4800CQ and at 1200 x 1200 dpi using the PostScript driver.



Print speed is tested using BLI's Monochrome Test Original (with 6% page coverage) and BLI's Color Test Original with 10% coverage for each color (cyan, magenta, yellow and black). The test page is printed in a quantity equal to double the vendor's rated print speed for the device in each mode tested (e.g., if the vendor's rated print speed is 20 ppm, 40 pages are printed). The Lexmark C522n's print speeds were tested at the default 4800CQ and at 1200 x 1200 dpi using the PCL 6 driver.

Color  
Monochrome

LABTEST





## Job Stream Evaluation

A job stream consisting of nine files (a mix of Word, Excel, HTML, PowerPoint and e-mail) is sent to a paused print queue. All files are monochrome or monochrome and mixed color and consist of five or fewer pages (total of 19 pages). Timing begins when the queue is released and ends when the last page of the job stream completely exits the device.

### *Color mode:*

*Time to completion of all print jobs (PostScript; 4800IQ):*

1 minute, 20.83 seconds.

*Time to completion of all print jobs (PCL; 4800IQ):*

1 minute, 13.76 seconds.

### *Black mode:*

*Time to completion of all print jobs (PostScript; 4800IQ):*

1 minute, 5.14 seconds.

*Time to completion of all print jobs (PCL; 4800IQ):*

1 minute, 4.76 seconds.

### *Problems encountered:*

None.

LABTEST



TONER YIELD

Tested Toner Yield and Supplies Cost Per Page (Color)

Color	Net Weight (In grams)	Toner Yield (Impressions)	Impressions Per Gram	Toner Cost Per Page <sup>1</sup>	Total Toner Cost Per Page <sup>1</sup>	Supplies Cost Per Page <sup>2</sup>
Black		4,602		3.498¢	17.661¢	19.335¢
Cyan		3,283		4.721¢		
Magenta		3,283		4.721¢		
Yellow		2,914		5.319¢		

<sup>1</sup> Toner cost per page is based on Lexmark's Web pricing for the toner cartridges and BLI's tested toner yields using a toner yield test original with 10% page coverage per color.

<sup>2</sup> The supplies cost per page is based on Lexmark's Web pricing and BLI's tested toner yields for all four colors of toner (cyan, magenta, yellow and black), as well as Lexmark's rated yields for the drum, transfer maintenance kit, waste toner bottle and fuser.

Tested Toner Yield and Supplies Cost Per Page (5% Black)

Color	Net Weight (In grams)	Yield (Impressions)	Impressions Per Gram	Toner Cost Per Page <sup>1</sup>	Supplies Cost Per Page <sup>2</sup>
Black	131.0	11,548	88.15	1.394¢	2.03¢

<sup>1</sup> Toner cost per page is based on Lexmark's Web pricing for the black print cartridge and tested toner yield using BLI's toner yield test original with 5% page coverage.

<sup>2</sup> The supplies cost per page is based on Lexmark's Web pricing and BLI's tested toner yield for the black toner cartridge, as well as Lexmark's rated yields for the drum, transfer unit and fuser.

This report has been reprinted with the written permission of Buyers Laboratory Inc.

LABTEST



FAD 33932

## Lexmark C522n 20 ppm Desktop Laser

US release:	October 2005
US SRP / Street:	\$499/ INA
Color Type:	4-color
Controller:	Lexmark
CPU / Bits / MHz:	RISC/INA/312
Memory (std / max):	128 MB/640 MB
HDD:	Standard 20-GB
PDLs:	PCL 6, PostScript 3, PDF 1.5, PPDS Migration Tool

### ■ ENGINE

Mfr / Model / Country:	Lexmark/ C520/ INA
Monthly Duty Cycle:	45,000 pages
Rated Engine Life:	INA

### ■ RESOLUTION

Standard:	1200 x 1200 dpi
Enhanced:	4800 CQ

### ■ INTERFACE / CONNECTIVITY

Client OS Spt:	Windows, Linux, Unix, Mac, Netware and O/S 400
Network Spt:	TCP/IP, IPX/SPX, Appletalk, LexLink,
Std Interface:	10/100BaseT Ethernet, USB
Opt Interface:	802.11g wireless
Printer Mgmt:	MarkVision Professional

- **COMMENTS:** Ships with starter cartridges (each w/1,500-page yield) First page out time, 13 seconds; Chemically Processed Toner

### Paper Handling

Std/Max Paper Source(s):	2/3
Std/Max Paper Capacity:	250 sheets//750 sheets
Paper Size (W x L):	8.6" x 14" max
Print Area (W x L):	8.5" x 14" max
Paper Weights:	16 to 47 bond , up to 90 lb index
Std Output Capacity:	250 sheets
Other Output:	None
Bypass (Capacity/Weight):	1 sheet/16 lb bond to 110 lb index
Automatic Duplexing:	None

### Features

Collation:	Standard
Color Depth (Bits):	INA
Color Management:	Auto Color Calibration, ColorCare
Fonts:	PCL: 89 scalable, 2 bitmapped; PS: 91, PPDS: 39 scalable and 5 bitmapped
IPP (Web) Support:	Standard
RIP Once / Print Many:	Standard
Secure Printing:	Standard
Other:	

### Additional Information

Display / Characters:	LCD/INA
Energy Star Compliance:	Yes
Noise Level (Print / Idle):	51 dB / 32 dB
Power Consumption:	350W max
Power Reqs (V /Hz/Amps):	110/INA/INA
Warranty:	1- year OnSite Repair
Weight (Base Unit):	57 lbs
Dimensions (H x W x D):	19" x 17.3" x 16.1"

### Options

802.11g wireless:	\$449
500-sheet drawer:	\$299
OTHER SUPPLIES	
Waste toner bottle (30,000 pages):	\$8.10
Fuser maintenance kit (120,000 pages):	\$299
Transfer maintenance kit (120,000 pages):	\$269

### Supplies

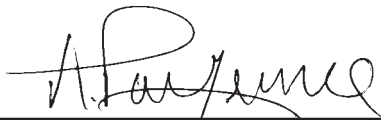
Black toner:	\$131; yield—4,000 pages; coverage—5%
Color toner:	\$144 each; yield—3,000 pages each; coverage—5% each
Photoconductor:	\$115 (4-pack); yield—20,000 pages; coverage—Not applicable

# CERTIFICATE OF RELIABILITY

AWARDED TO  
**LEXMARK INTERNATIONAL, INC.**

For the performance of the  
**Lexmark C522n**  
throughout BLI's in-house durability test.

This is to certify that when subjected to a 22,500-impression  
Buyers Lab durability test in a networked environment,  
the Lexmark C522n proved to be a highly reliable product.



ANTHONY F. POLIFRONE  
MANAGING DIRECTOR



*June 2006*

DATE

THE LEADING INDEPENDENT OFFICE PRODUCTS TEST LAB AND BUSINESS CONSUMER ADVOCATE  
BUYERS LABORATORY INC. • 20 RAILROAD AVENUE • HACKENSACK, NJ 07601 • 201-488-0404 • WWW.BUYERSLAB.COM  
Copyright 2006 by Buyers Laboratory. Reproduction without written permission from BLI is illegal and strictly prohibited.