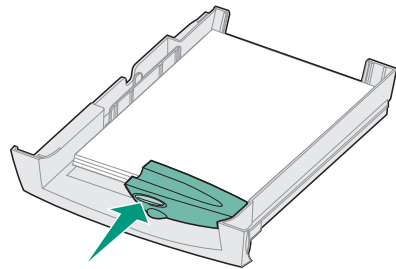


Lexmark™ J110

Quick Reference

Loading media in tray 1 or tray 2

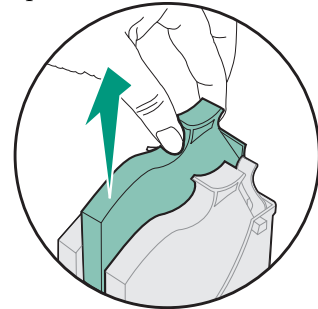
- 1 Grip the tray tab and pull the tray completely out of the printer.
- 2 Squeeze the width guide and slide it all the way to the left.
- 3 Before loading the media, flex the sheets back and forth, then fan them. Straighten the edges on a flat surface.
- 4 Place the paper in the tray, print side down. Make sure the paper lies flat in the tray.
- 5 Press the length guide button to slide the guide lightly against the bottom edge of the paper stack.



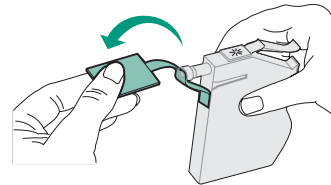
- 6 Squeeze the width guide and slide it to the right until it is touching the edge of the media stack.
- 7 Reinstall the tray.

Replacing ink cartridges

- 1 Turn the printer on (I).
- 2 Open the printer front cover. The carrier moves to the load position at the far left.
- 3 Squeeze the rear latch of the ink cartridge you are replacing and lift it up and out of the printer.



- 4 Remove the new ink cartridge from its packaging and pull off the tape.



- 5 Insert the ink cartridge into the corresponding printhead slot and push down on the cartridge until it is securely in place.



- 6 Close the front cover.

Error messages

An error message may indicate a color ink cartridge or printhead (**C=Cyan, M=Magenta or Y=Yellow**) or a black ink cartridge or printhead (**K=Black**) needs attention.

31 Missing Ink Cartridge

Insert the ink cartridge that is missing. If the ink cartridge is already installed, remove it. Check that the tape has been removed and re-insert the cartridge, making sure it is securely in place.

88 Cartridge Low

An ink cartridge is almost empty. Check that you have a replacement cartridge and press **Go** to clear the message.

89 Cartridge Empty

An ink cartridge is empty and must be replaced.

31 Defective Ink Cartridge

An ink cartridge is damaged and must be replaced.

Printer Calibrating

The PerfectFinish cartridge applicator is refilling the cartridge. You may hear clicking noises as it refills. Once the cartridge applicator is refilled, you may resume printing.

87 PerfectFinish Empty

The PerfectFinish cartridge is empty and must be replaced.

31 Missing Printhead

A printhead is not detected. Install the printhead. If the printhead is already installed, check that it is positioned correctly in the printer.

930-938 Service

Turn the printer off and back on from the on/off switch. If this does not clear the error message, do steps 1-7 under Print quality tips, or wipe the copper contacts.

Paper jam messages

200/201/209 Paper Jam

Check Tray 1

The paper jammed from tray 1.

- Remove tray 1 and look inside the opening.
- Gently pull the jammed paper toward you.
- Reinstall the tray and press **Go**.

203/204/205/207 Paper Jam

Open Cover/Move Media

The paper jammed inside the printer.

- Open the front cover.
- Press the **Menu>** button to advance the paper incrementally until you can reach it and pull it out of the printer.
- If the paper does not advance, remove the source tray, pull out the jammed paper, and discard it.
- Close the cover and press **Go**.

206/208/220/222 Paper Jam

Check Tray 2

The paper jammed from tray 2.

- Remove tray 2 and look inside the opening.
- Gently pull the jammed paper toward you.
- Reinstall the tray and press **Go**.

221 Paper Jam

Check Tray 2/Move Media

The paper jammed from tray 2.

- Open the cover.
- Press the **Menu>** button to advance the paper incrementally until you can reach it and pull it out of the printer.
- If the paper does not advance, remove the source tray, pull out the jammed paper, and discard it.
- Close the cover and press **Go**.

250 Paper Jam

Check MP Feeder

The paper jammed in the multipurpose feeder.

- Pull the paper release lever toward the media and hold it.

Print quality tips

If streaking or print quality problems occur, first check that the printheads are positioned correctly in the carrier:

- 1 Press **Menu>** until you see the Utilities Menu.
- 2 Press **Select**.
- 3 Press **Menu>** until you see Change Printhead.
- 4 Press **Select**.
- 5 Open the printer cover.
- 6 Raise the carrier handle up and back down to reseat the printheads.
- 7 Close the cover and reprint your job.

If you do not see any improvement, do a Short Clean, which fixes most print quality problems.

- 1 From the Utilities Menu, press **Menu>** until Clean Printheads appears on the display.

- 2 Press **Select**.

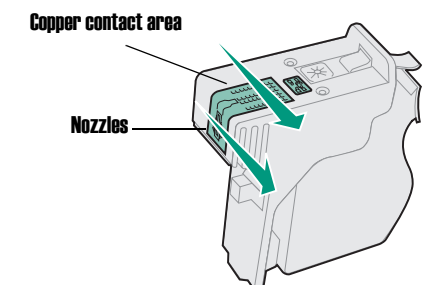
Short Clean appears on the display.

- 3 Press **Select**.

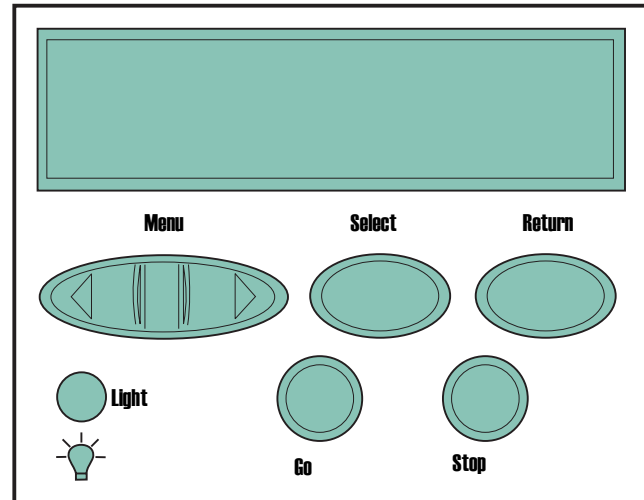
Once the Short Clean finishes, a test page prints four color bars.

If the print quality is still unsatisfactory, do a Long Clean (see *Cleaning the Printheads* on the *User's Guide* CD). Keep in mind that a Long Clean uses a substantial amount of ink and takes some time to run.

If the problem persists, follow steps 1-5 above, remove the printheads, and wipe the copper contact area with a damp, lint-free cloth.



Overview of printer menus



Press <Menu>:

- To enter the menus (>Menu takes you to the first menu; <Menu takes you to the last menu)
- To scroll to the next menu, item in a menu or value

Press Stop:

- To take the printer offline
- To stop the printer when the printer is busy processing or printing a job

Press Select:

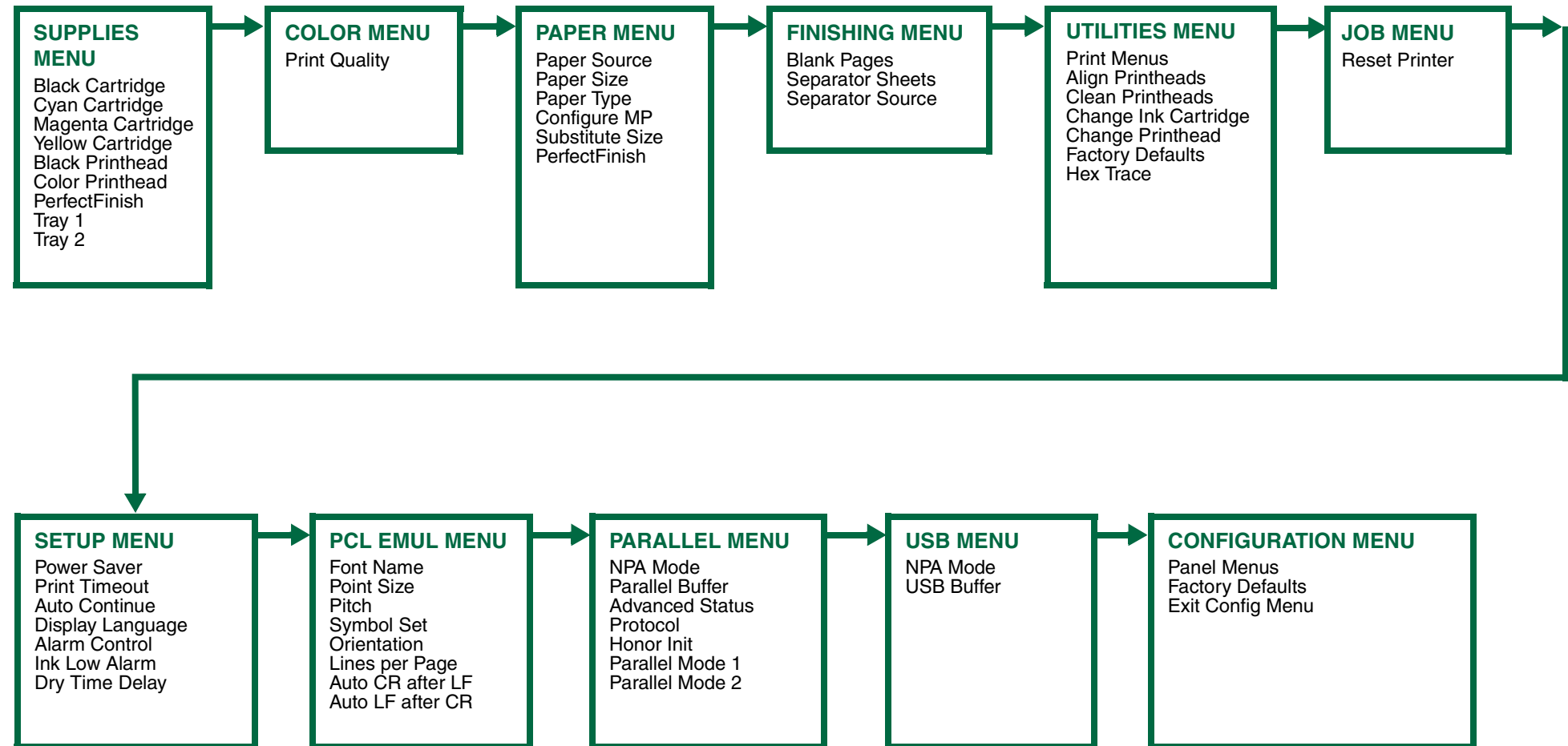
- To select the item listed on the second line of the display
- To save a menu item as the new default setting

Press Return:

- To go back to the previous menu item or menu level

For all menus except CONFIGURATION MENU:

- Press **Go** to return to **Ready**.



For additional information, see the User's Guide CD.



© Copyright 2000. Lexmark International, Inc.
All rights reserved. Printed in U.S.A.
This document is 100% recyclable. 10/00

E.C. #1J0177



P/N 11J3690