



Print Release, Accounting, and My e- Task for Lexmark Solutions Platform On Premise version 1.3

Installation Guide

Contents

Overview.....	4
Getting started.....	5
Minimum and recommended system requirements.....	5
Installing prerequisite services on Windows Server 2008.....	7
Installing prerequisite services on Windows Server 2003.....	10
Installing SQL.....	13
Installing Windows SharePoint Services.....	17
Setting up a SharePoint Network Load Balancing (NLB) farm.....	17
Installing Windows SharePoint Services 3.0 (Advanced).....	20
Installing Windows SharePoint Services 3.0 (Basic).....	22
Configuring IIS and WSS after installation.....	23
Configuring Alternate Access Mappings (AAMs).....	23
Installing the Solutions Platform.....	25
Installing the Solutions Platform.....	25
Adding a license.....	25
Upgrading the Solutions Platform.....	26
Creating a Virtual Directory.....	26
Increasing TPA log capacity.....	28
Configuring the membership provider automatically.....	28
Configuring the membership provider manually.....	29
Adding a print release queue on a client workstation or print server.....	34
Changing the logging level.....	35
Modifying the change log retention time.....	36
Turning off the recycle bin settings.....	36
Disabling list versioning.....	36
Turning off the search visibility of a site.....	37
Troubleshooting.....	38
An application error has occurred.....	38
Application is unavailable.....	38
Cannot install solution.....	39
Jobs do not appear in the print release queue.....	39

Jobs do not print when released from the printer.....41

Notices.....42

Edition notice.....42

Index.....52

Overview

Lexmark™ Solutions Platform On Premise provides a framework for managing and tracking document output throughout your organization. It is composed of three core functions: Print Release, Accounting, and My e-Task.

Using Print Release, you can submit documents to a server-based print queue and then release print jobs at a connected printer using a user name and password or a badge. Using Print Release increases security, increases your awareness of the amount of jobs printed, and reduces waste created from unwanted or unnecessary print jobs.

Using Accounting, you can view and export reports of your print, copy, scan, e-mail, and fax jobs.

Using My e-Task, you can configure copy and e-mail preferences as well as create customized shortcuts for frequently performed copy and e-mail jobs. You can also customize the language that you want the printer to use whenever you authenticate at any printer.

Getting started

The Lexmark Solutions Platform requires the following prerequisites to be met before installation of the core solution and other solutions can continue. Make sure:

- ___ Minimum or recommended system requirements are met.
- ___ Internet Explorer Enhanced Security Configuration is disabled.
- ___ The virus checker on servers and print servers is turned off.
- ___ You have administrator-level account permissions.
- ___ User account control is disabled during installation.
- ___ .NET Framework 3.5.1 SP1 is installed.
- ___ Internet Information Services (IIS) 6 or 7 is installed.
- ___ Windows SharePoint Services 3.0 SP2 is installed.
- ___ SNMP Service is running.

Minimum and recommended system requirements

Operating system requirements

Any of the following:

- Windows Server 2008 R2 Standard and Enterprise Edition
- Windows Server 2008 SP2 Standard and Enterprise Edition (x86 or x64)
- Windows Server 2003 R2 Standard or Enterprise Edition with SP2 (x86 and x64)

Note: An x86-based system refers to a 32-bit operating system, and an x64-based system refers to a 64-bit operating system.

Hardware requirements for installing Windows SharePoint Services

The Lexmark Solutions Platform uses Windows SharePoint Services to monitor and manage the devices and solutions in the system. SharePoint installation can range from a single computer (basic installation) to many computers (advanced). For additional information, see the Windows SharePoint Web site.

Basic installation

Category	Required	Recommended for enterprise systems
Processor	2.5GHz dual-core	Dual processors that are 3GHz or faster each
RAM	1GB	2GB
Hard disk drive	NTFS file system—formatted partition with a minimum of 3GB of free space Note: The listed space requirement includes both space for the application and free space for operation, but requirements may vary depending on system complexity and number of jobs.	NTFS file system—formatted partition with 3GB of free space plus adequate free space for your Web sites

Category	Required	Recommended for enterprise systems
Display	1024 × 768 resolution	1024 × 768 or a higher resolution monitor
Network speed	56Kbps connection between client computers and server Note: Network speed affects the time required to perform a solution, and speed requirements depend on each solution.	56Kbps or faster connection between client computers and server

Advanced installation

Category	Required	Recommended for enterprise systems
Processor	2.5GHz dual-core	Dual processors that are 2.5GHz or faster each
RAM	2GB	4GB
Hard disk drive	NTFS file system—formatted partition with a minimum of 3GB of free space Note: The listed space requirement includes both space for the application and free space for operation, but requirements may vary depending on system complexity and number of jobs.	NTFS file system—formatted partition with 3GB of free space plus adequate free space for your data storage requirements
Display	1024 × 768 resolution	1024 × 768 or a higher resolution monitor
Network speed	<ul style="list-style-type: none"> 56Kbps connection between client computers and server 100Mbps connection for connections between computers in your server farm Note: Network speed affects the time required to perform a solution, and speed requirements depend on each solution.	<ul style="list-style-type: none"> 56Kbps connection between client computers and server 1Gbps connection for connections between computers in your server farm

Other requirements

Category	Requirements
Browser	Internet Explorer 7.0 or 8.0, Mozilla Firefox 3.5 or later
Internet connection (for download and activation of software)	Broadband connection, 128Kbps or greater
Supported drivers	Lexmark Universal Print Driver 1.6.2 or later
Supported databases	Visit the Microsoft Web site for databases that work with your version of SharePoint.

Category	Requirements
Supported card readers (for user authentication on the devices)	<p>For printers:</p> <ul style="list-style-type: none">• HID Omnikey 5325• Magtek - TWN3281 <p>For Print Release Appliance (PRA):</p> <ul style="list-style-type: none">• ART11230 Elatec - TWN3 HID Prox Desktop reader with USB• ART11248 Elatec - TWN3 LEGIC Desktop reader with USB <p>For an updated list of supported card readers, contact your Lexmark representative.</p>

Installing prerequisite services on Windows Server 2008

Disabling IE ESC on Windows Server 2008

- 1 Open the Server Manager.
- 2 From the Security Information section, click **Configure IE ESC**.
- 3 From the Internet Explorer Enhanced Security Configuration dialog, select **Off** in the Administrators section.
- 4 Click **OK**.

Installing .NET Framework on Windows Server 2008

The .NET Framework version 3.5.1 is listed in the Windows Server 2008 Server Manager Features. It can be found by navigating to **Start > Control Panel > Add/Remove Programs**. If it is not listed, then install it to enable its functions.

- 1 Open the Server Manager.
- 2 From the Features Summary View dialog, click **Features > Add Features**.
- 3 Select the **.NET Framework 3.5.1 Features** check box.
- 4 Click **Add Required Role Services > Next > Next**.
- 5 Select the **ASP.NET** check box, and then click **Add Required Role Services**.
- 6 From the Select Role Services dialog, scroll down and then select the **Management Tools** check box.
- 7 Click **Next > Install**.

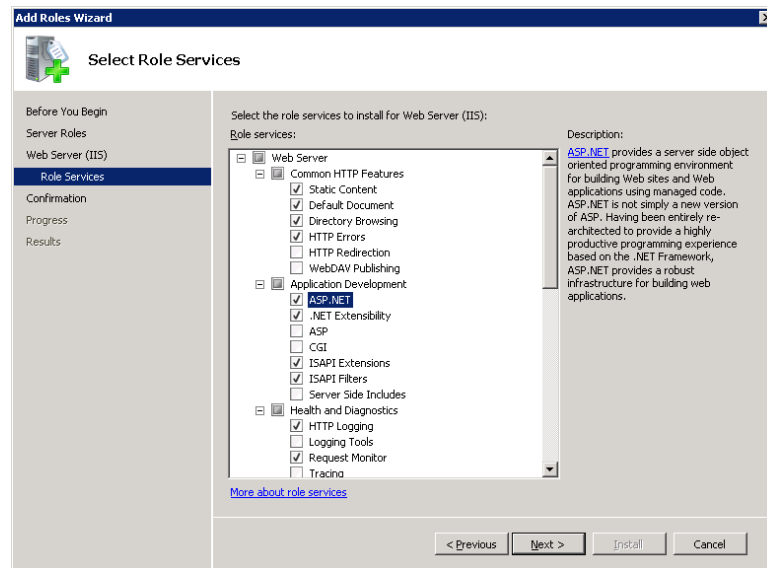
Installing IIS 7.0 on Windows Server 2008

The Internet Information Service (IIS) 7.0 is listed in the Windows Server 2008 OS Server Manager Roles, and needs to be installed to enable its functions.

- 1 Open the Server Manager.
- 2 From the Role Summary View, click **Roles > Add Roles**.
- 3 From the Add Roles Wizard dialog, click **Next**.
- 4 From the Select Server Roles dialog, select **Web Server (IIS)**, and then click **Next**.

5 Click **Add Required Role Services > Next > Next**.

6 From the Select Role Services dialog, in the Application Development menu tree, select **ASP.NET**.



7 Click **Next > Install**.

Enabling ASP.NET

Enable ASP.NET v2.0 to satisfy the installation requirements for Windows SharePoint Services after .NET Framework 3.5.1 and its subsequent updates have been installed.

On 32-bit platforms

- 1 Open a command prompt.
- 2 Set your directory to `C:\WINDOWS\Microsoft.NET\Framework\v2.0.50727`.
- 3 On the command line, type `aspnet_regiis.exe -i`.

When the command is completed, ASP.NET v2.0.50727 should now be on the list of Web extensions, and should be the default property in the ASP.NET tab of the Web Site Properties dialog.

- 4 From the Web Service Extension list on the Internet Information Services Manager, make sure the status of ASP.NET version 2.0.50727 is set to **Allowed**.

On 64-bit platforms

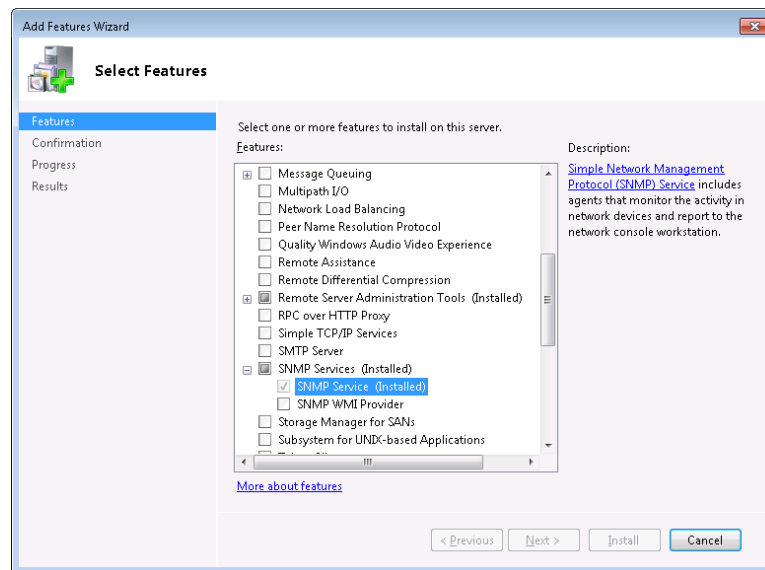
- 1 Open a command prompt.
- 2 Set your directory to `C:\WINDOWS\microsoft.NET\Framework64\v2.0.50727`.
- 3 On the command line, type `aspnet_regiis.exe -i -enable`.

When the command is completed, ASP.NET v2.0.50727 should now be on the list of Web extensions, and should be the default property in the ASP.NET tab of the Web Site Properties dialog.

- 4 From the Web Service Extension list on the Internet Information Services Manager, make sure the status of ASP.NET version 2.0.50727 is set to **Allowed**.


Installing SNMP Service on Windows Server 2008

- 1 Open the Server Manager.
- 2 From the Features Summary section, click **Add Features**.
- 3 Select **SNMP Services (Installed)**.
- 4 Click + to expand the SNMP Services (Installed) option, and then click **SNMP Service (Installed)**.



- 5 Click **Install**.
- 6 When setup finishes, restart your computer to complete the SNMP Service installation.

Configuring SNMP Service on Windows 2008

- 1 Click , or click **Start > Run**.
- 2 In the Start Search or Run field, type **services.msc**.
- 3 Locate **SNMP Service** from the list of services. Right-click the service, and then click **Properties**.
- 4 Click the **Security** tab, and then clear the **Send Authentication Trap** check box.
- 5 From the Accepted Community Names section, click **Add**.
- 6 From the SNMP Service Configuration dialog, do the following:
 - a From the "Community rights" drop-down menu, select **READ ONLY**.
 - b In the Community Name field, type **public**.
 - c Click **Add**.
- 7 From the Security tab, select **Accept SNMP packets from any host**.
- 8 Click **Apply > OK**.

Adjusting firewall inbound rules for the new SNMP service

- 1 Open “Windows Firewall with Advanced Security” from the Administrative Tools menu.
- 2 In the left pane, click **Inbound Rules**.
- 3 Locate **SNMP Service** from the list.
By default, there should be two inbound rules for SNMP Service: one with “Local subnet” under the Remote Address column, and another with “Any” under the same column.
- 4 Double-click the rule with “Any” as a remote address.
- 5 From the SNMP Service Properties dialog, click the **Advanced** tab.
- 6 From the Profiles section, select the **Private** and **Public** check boxes to allow all incoming SNMP traffic.
- 7 Click **Apply > OK**.

Installing prerequisite services on Windows Server 2003

Disabling IE ESC on Windows Server 2003

- 1 Open the “Add or Remove Programs” dialog on the Control Panel.
- 2 Click **Add/Remove Windows Components**.
- 3 From the Windows Components Wizard, clear the **Internet Explorer Enhanced Security Configuration** check box.
- 4 Click **Next > Finish**.

Installing the .NET Framework on Windows Server 2003

Note: Make sure you have your Windows Server 2003 installation CD ready. You will need it to install additional Windows components.

- 1 Open the **Add or Remove Programs** dialog on the Control Panel.
- 2 Click **Add/Remove Windows Components**.
- 3 From the Windows Components Wizard dialog, select the **Application Server** check box.
- 4 Select the **Microsoft .NET Framework 2.0** check box.
- 5 Click **Management and Monitoring Tools > Details**.
Note: Make sure you clear the **Management and Monitoring Tools** check box.
- 6 Select the **Simple Network Management Protocol** check box.
- 7 Click **OK > Next**.
- 8 Insert the installation CD when prompted.

Updating .NET Framework 3.5

- 1 Run Windows Updates to get the .NET Framework 3.5 executable file with Service Pack 1 or later. This file is usually named **dotnetfx35.exe**.
- 2 Accept the Terms of Agreement, and then click **Install**.

Installing IIS 6.0 on Windows Server 2003

The Internet Information Service (IIS) 6.0 is listed in the Windows Server 2003 OS Windows Components, and needs to be installed to enable its functions.

- 1 Make sure you have your Windows Server 2003 installation CD ready. You need it to install additional Windows components.
- 2 Open the “Add or Remove Programs” dialog on the Control Panel.
- 3 Click **Add/Remove Windows Components**.
- 4 From the Windows Components Wizard, select **Application Server**, and then click **Details**.
- 5 From the Application Server dialog, select **ASP.NET**.
- 6 Click **OK > Next**.

Enabling ASP.NET

Installing IIS 6.0 will also install ASP.NET. You need to enable ASP.NET v2.0 to satisfy the install requirements for Windows SharePoint Services after .NET Framework 3.5.1 and its subsequent updates have been installed.

On 32-bit platforms

- 1 Open a command prompt.
- 2 Set your directory to **C:\WINDOWS\Microsoft.NET\Framework\v2.0.50727**.
- 3 On the command line, type **aspnet_regiis.exe -i**.
Once the command completes, ASP.NET v2.0.50727 should now be on the list of Web extensions, and should be the default property in the ASP.NET tab of the Web Site Properties dialog.
- 4 From the Web Service Extension list on the Internet Information Services Manager, make sure the status of ASP.NET version 2.0.50727 (32-bit) is set to **Allowed**.

On 64-bit platforms


- 1 Open a command prompt.
- 2 Set your directory to **C:\WINDOWS\microsoft.NET\Framework64\v2.0.50727**.
- 3 On the command line, type **aspnet_regiis.exe -i -enable**.
Once the command completes, ASP.NET v2.0.50727 should now be on the list of Web extensions, and should be the default property in the ASP.NET tab of the Web Site Properties dialog.
- 4 From the Web Service Extension list on the Internet Information Services Manager, make sure the status of ASP.NET version 2.0.50727 (32-bit) is set to **Allowed**.

Installing SNMP Service on Windows Server 2003

- 1 Make sure you have your Windows Server 2003 installation CD ready. You need it to install additional Windows components.
- 2 Open the “Add or Remove Programs” dialog on the Control Panel.
- 3 Click **Add/Remove Windows Components**.
- 4 From the Windows Components Wizard, select **Management and Monitoring Tools**, and then click **Details**.
- 5 From the “Management and Monitoring Tools” dialog, select the **Simple Network Management Protocol** check box.
- 6 Click **OK > Next**.

After installing the SNMP Service on Windows Server 2003, you also need to configure other settings like agent properties, trap destination, and security properties. For more information, visit the documentation on the Microsoft TechNet Web site.

Configuring SNMP Service on Windows 2003

- 1 Click , or click **Start > Run**.
- 2 In the Start Search or Run field, type `services.msc`.
- 3 Locate **SNMP Service** from the list of services. Right-click the service, and then click **Properties**.
- 4 Click the **Security** tab, and then clear the **Send Authentication Trap** check box.
- 5 From the Accepted Community Names section, click **Add**.
- 6 From the SNMP Service Configuration dialog, do the following:
 - a From the “Community rights” drop-down menu, select **READ ONLY**.
 - b In the Community Name field, type `public`.
 - c Click **Add**.
- 7 From the Security tab, select **Accept SNMP packets from any host**.
- 8 Click **Apply > OK**.

Adjusting firewall inbound rules for the new SNMP service

Open **Windows Firewall** from the Control Panel.

If it is not running, and you do not want to enable it, then you can skip this step.

Installing SQL

Before doing an advanced installation of Windows SharePoint Services, you must first install and configure MS SQL Server 2005, and then set up Network Load Balancing (NLB) for improved system performance in larger SharePoint farms.

Installing SQL Server 2005

Installing the paid version

- 1 Launch the SQL Server installer, accept the End User License Agreement (EULA), and then click **Next**.
- 2 After setup installs the software required for SQL Server 2005, click **Install** to begin the component update. When component update is finished, click **Finish**.
- 3 From the Install Wizard welcome page, click **Next** to start the installation.
Setup does a quick configuration check to scan for conditions that may block installation.
- 4 Click **Next** when configuration check is finished.
- 5 Type the appropriate information on the Registration page, and then click **Next**.
- 6 From the “Components to Install” page, select **SQL Server Database Services** and **Workstation components, Books Online and development tools**.
- 7 Click **Advanced**.
- 8 From the SQL Server Books Online drop-down menu, select **Not Available**, and then click **Next**.
- 9 Select **Named Instance**, and then type a name to identify your database (for example, **LXKWSS**). Click **Next**.
Note: The Named Instance will be used later as part of the unique database identification. For example, if you install a server with IP address 10.199.64.148 to SharePoint, then that database is known as 10.199.64.148\LXKWSS.
- 10 From the Service Account dialog, select **Use a domain user account**, and then enter your domain user credentials.
- 11 From the “Start services at the end of setup” section, select all three SQL services, and then click **Next**.
Note: You will need to set the SQL Server Agent to automatically start up later for SharePoint to be able to detect the database server.
- 12 Click **Next** until you reach the “Ready to Install” dialog.
- 13 Click **Install**.
Setup completes after 10 to 15 minutes.
- 14 Click **Finish** to close the dialog.

Installing SQL Express (free version)

- 1 Launch the SQL Express installer and accept the End User License Agreement (EULA).
- 2 Click **Install > Next > Next > Next**.
Note: You may ignore warnings about ASP.NET Version Registration Requirements.
- 3 Type your name and organization, and then clear the **Hide Advanced Configurations** check box.

- 4 Leave the default Feature Selection as it is, and then click **Next**.
- 5 Type a Named Instance, or a name to identify your database. For example, **LXKWSS**.
Note: The Named Instance will be used later as part of the unique database identification. For example, if you install a server with IP address 10.199.64.148 to SharePoint, then that database is known as 10.199.64.148\LXKWSS.
- 6 Select **Use a domain user account**, and then type the credentials of the administrator account you are using to install all the applications.
Note: Do not enter a domain if you are using a local account to install applications.
- 7 Select the **SQL Server** and **SQL Browser** check boxes, and then click **Next**.
- 8 Select **Windows Authentication Mode**, and then click **Next**.
Note: The customer may install using Mixed Mode and have an SQL root password, but this password will not be used by the Lexmark Solutions Platform at any point.
- 9 Click **Next** repeatedly to keep the default settings, and then click **Install**.
- 10 Click **Finish** when the installation is complete.

Installing SQL Server 2005 SP3 or later

Install the service pack if necessary.

- 1 Download the service pack to your desktop, and then click **Run** when download is complete.
- 2 From the Security Warning dialog, click **Run**.
- 3 From the Welcome dialog, click **Next**.
- 4 Accept the EULA, and then click **Next**.
- 5 From the Feature Selection dialog, leave the default settings, and then click **Next** until the “Ready to Install” dialog appears.
- 6 Click **Install**.
- 7 When prompted to restart your computer after installation, click **OK > Next**.
- 8 From the Installation Complete dialog, click **Next**.
- 9 From the Additional Information dialog, select the **Launch the User Provisioning Tool for Windows Vista after SP2 installation completes** check box.
Note: If you are installing on Windows Server 2003, then you may opt not to launch the User Provisioning Tool.
- 10 Click **Finish**.
- 11 From the SQL Server User Provisioning dialog, select the Named Instance (for example **LXKWSS**), on the left pane, and then click **>>** to add it to the list on the right pane.
- 12 Click **OK**, and then restart your computer.

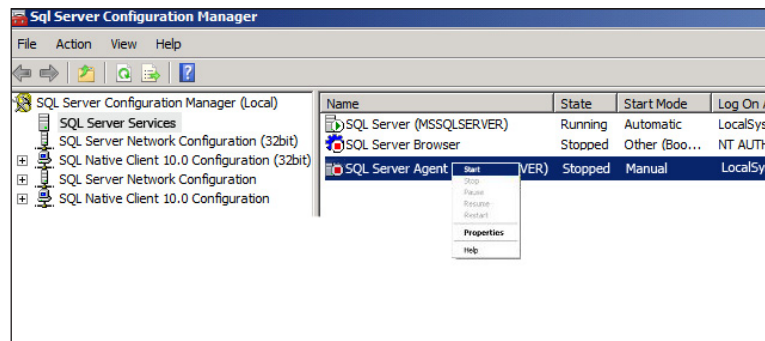
Configuring SQL Server 2005 after installation

After installing the SQL Server 2005, you need to make the database ready for Windows SharePoint Services 3.0 to use.

Setting the SQL Server Agent to start automatically

- 1 Open the SQL Server Configuration Manager.
- 2 In the left pane, click **SQL Server 2005 Services**.
- 3 In the right pane, right-click **SQL Server Agent**, and then click **Start**.

A green arrow on the icon next to **SQL Server Agent** and on the toolbar indicates that SQL Server Agent started successfully.



- 4 Set the SQL Agent Service to start automatically when the server is started up.
 - a Right-click **SQL Service Agent**, and then click **Properties**.
 - b Click the **Service** tab.
 - c From the Start Mode drop-down menu, select **Automatic**.

Configuring Named Pipe and TCP settings

- 1 Open SQL Server 2005 Surface Area Configuration.

Note: The tool should automatically open to your server. If not, click **change computer**, and then type the IP Address\Named Instance combination of your database server.
- 2 Select **Add New Administrator**.
- 3 On the left pane, select the Named Instance your created earlier, for example LKXWSS, and then click >> to add it to the list on the right pane.
- 4 Click **OK**.
- 5 Click **Surface Area Configuration for Services and Connections**.
- 6 In the left pane, under the Database Engine menu tree for your Named Instance, click **Remote Connections**.
- 7 From the "Local and remote connections" section, select **Using both TCP/IP and named pipes**.
- 8 Click **Apply** > **OK**.
- 9 Restart the database server by using the standard Windows Services (click **Start** > **Administrative Tools** > **Services**) or by clicking the **Stop** and **Start** on the Service item on the menu tree for your Named Instance.

Opening up firewall ports

If your SQL database is on a separate server from where SharePoint will be installed, then open Port 1433 in your firewall for both TCP and UDP. This establishes inbound and outbound connections on both servers so that SharePoint can detect the database.

Installing Windows SharePoint Services

Setting up a SharePoint Network Load Balancing (NLB) farm

For larger SharePoint farms composed of a database server and more than one Web server, you need to establish a Network Load Balance (NLB) cluster to increase the reliability and capacity of the servers. As many as 32 servers can be gathered in a single NLB cluster. For more information on NLB farms, see the *Server Setup White Paper*.

Note: If a server is removed from the central farm, then you need to uninstall and then reinstall the Solutions Platform on that server for it to function properly as a standalone server.

Before setting up an NLB farm

Make sure:

- You have two or more servers that are identically configured. If not, they should at least be closer in specifications and identical in drive setup.
- You have a static IP address for each server in the cluster.
- You have a static virtual IP address and fully qualified domain name (FQDN). The IP address is used when installing the Solutions Platform, and the FQDN when creating your “SharePoint-80” Web application.
- You have a standalone database server for SharePoint to use. This could be a clustered database setup for larger SharePoint farms.
- All servers (database or Web servers) in the farm are in the same domain.
- You have a domain user name, preferably the same one you used when installing the database server.
- Each server meets the SharePoint prerequisites. For more information, see “Getting started” on page 5.

In addition, it is recommended that each Web server have a second network interface controller (NIC) to be used as a “heartbeat” connection between the nodes in your cluster. If you have more than two nodes, then you may need to set up a switch or another device to cross-connect all the servers. You do not need quorum drives, which are typical in application clusters.

Adding NLB to Web servers

On Windows Server 2003, Network Load Balancing (NLB) is a feature that is already installed by default. On Windows Server 2008, enable NLB using the Server Manager.

- 1 Open the Server Manager.
- 2 From the Features Summary section, click **Add Features**.
- 3 From the Select Features dialog, select the **Network Load Balancing** check box.
- 4 Click **Next > Install**.
- 5 When installation finishes, click **Close**.

Repeat the steps to enable NLB using the Server Manager on all other Web servers you will be adding to the cluster.

Adding a node to an NLB cluster will modify the network connection in IPCONFIG. This is why you see the connection flicker as you add the node, and why you need to refresh the Manager's view occasionally. You will see two IP addresses listed: the local static IP address for the node and the static virtual IP address.

Setting up Network Load Balancing

Choose one of your Web servers to manage the cluster. Generally, the first one you set up will do. It is also recommended that an external server be used to set up and manage the cluster for reliability in case problems occur. After the NLB feature is installed, your server will have a new menu under Administrative Tools called Network Load Balancing Manager.

Adding the first node

- 1 Open the Network Load Balancing Manager.

The node tree on the left pane of the Manager window expands as nodes are added.

- 2 Right-click **Network Load Balancer Clusters**, and then select **New Cluster**.

Note: The next steps describe how to create clusters on Windows Server 2008. For Windows Server 2003, the dialogs are similar. However, you need to configure the cluster IP addresses, cluster parameters, and port rules first before adding the Web server IP address and the host parameters in Windows Server 2003.

- 3 From the “New Cluster: Connect” dialog, type the IP address of the first Web server, and then click **Connect**.

An entry will appear in the “Interfaces available for configuring a new cluster” section.

- 4 Select the interface that is on the LAN, and then click **Next**.

- 5 From the “New Cluster: Host Parameters” dialog, click **Next**.

- 6 From the “New Cluster: Cluster IP Addresses” dialog, add the virtual IP addresses used by the cluster:

- a Click **Add**.
- b Type the IP address and subnet mask for the virtual IP address.
- c Click **OK**.

- 7 Click **Next**.

- 8 From the “New Cluster: Cluster Parameters” dialog, enter your FQDN and select the operation mode:

- a From the IP address drop-down menu, select the virtual IP address.
- b In the Full Internet Name field, enter your FQDN.
- c Select your cluster operation mode.
 - If you have more than one NIC on your server, then select **Unicast**.

Note: The Unicast mode is generally the most preferred if you are interested in performance. For Windows Server 2003, however, you cannot select the Unicast mode unless you have more than one NIC.

- If you have only one NIC on your server, then select **Multicast**.

- d Click **Next**.

9 From the “New Cluster: Port Rules” dialog, specify the port rules:

Note: You do not need to restrict the cluster to a particular port or port range, but for security reasons, it is a good practice to do so.

a Select the default port rule, and then click **Remove**.

b Click **Add**.

1 Make sure the **All** check box is selected.

2 From the Port Range section, change the From and To fields to **80**, for your SharePoint-80 Web application.

3 From the Protocols sections, select **Both**.

4 From the Filtering mode section, select **Multiple Host** and **Single**.

5 Click **OK**.

c Click **Finish** to complete the setup.

You can add more ports later, if necessary.

The Network Load Balancing Manager main screen reappears. You will see an entry for the domain name of the cluster and the first server node that you have added in your node tree, with a green background on its icon. You should also notice that the node has your server host name as its label. Now, you can add the second or subsequent node or nodes.

Adding the second node

1 Right-click the domain name, and then select **Add Host To Cluster**.

2 In the Host field, type the IP address of the next Web server that you want to add to the cluster, and then click **Connect**.

As before, there will be a slight pause while the server network cards are polled. When entries appear on the “Interfaces available for configuring the cluster” section, select the LAN connection, and then click **Next**.

3 From the Host Parameters dialog, leave the defaults, and then click **Next**.

4 Click **Finish**.

You should now see two (or more) nodes listed under the cluster. Each should have a green background on its icon. A red background indicates there is a problem.

Verifying if Network Load Balancing is working

- 1 On your desktop, create a file in Notepad with the file name "default.htm."
- 2 Type **Served by Server X**, where **X** is the number of the server you are working from.
- 3 Move or copy and paste the file to **C:\inetpub\wwwroot**.
- 4 Repeat step 1 through step 3 on your other servers.
- 5 From a computer outside the cluster, open a Web browser, and then type the cluster URL.
You should see text indicating what server is currently serving the page.
- 6 Temporarily disable the network connection for that server, and then refresh the browser window.
If NLB clustering is working, then you should see text indicating a different server serving the page.
- 7 When you have established that NLB is working, reenable all network connections and proceed with the SharePoint installation.

Installing Windows SharePoint Services 3.0 (Advanced)

Installing Windows SharePoint Services 3.0 (Advanced)

Before SharePoint begins the installation process, make sure each server has the same install location and file locations. Choosing default settings can be helpful here. For consistency, use the same server you first chose when setting up your Network Load Balancer as the first SharePoint server.

- 1 Install the Microsoft Windows SharePoint Services 3.0 on a computer running Windows Server 2003 or Windows Server 2008.
- 2 In the "Choose the installation you want" page, click **Advanced**.
- 3 Select **Web Front End** as the server type, and then click **Install Now**.
When Setup finishes, a dialog box appears telling you to complete the configuration of your server. Make sure that the "Run the SharePoint Products and Technologies Configuration Wizard now" check box is selected.
- 4 Click **Close** to start the SharePoint Products and Technologies Configuration Wizard.
- 5 In the "Connect to a server farm" dialog, create a new server farm if this is the first WSS system installed, and then click **Next**.

- 6** Configure the database settings to connect to the database created during the SQL Database install.

The screenshot shows the 'Specify Configuration Database Settings' window of the SharePoint Configuration Wizard. It contains two sections: 'Specify Configuration Database Settings' and 'Specify Database Access Account'. In the first section, the 'Database server' field is populated with '10.199.9.143\WSS30SP2' and the 'Database name' field is 'SharePoint_Config'. The second section asks for a Windows account to use for database access, with 'Username' set to 'Administrator' and the 'Password' field masked with dots. Navigation buttons at the bottom include '< Back', 'Next >', and 'Cancel'.

- a** Specify the database server. Remember to include the Named Instance (for example, `10.199.64.148\LXXWSS`).
- b** The wizard automatically adds the name "SharePoint_Config" to the database name. Leave this as the default.
- c** Type your domain name and password.
- d** Click **Next**.

- 7** Configure other settings.

- 8** In the Configuration Successful page, click **Finish**.

The SharePoint Central Administration Web page opens.

Creating the "SharePoint-80" Web application

Note: Advanced installation types may not always create the SharePoint-80 Web site during the install process. You may need to create it yourself from the SharePoint Central Administration Web page to complete the post-installation configuration.

- 1** Open SharePoint Central Administration.
- 2** Click **Application Management > Create or extend Web application**.
- 3** From the Adding a SharePoint Web Application section, click **Create a new Web application**.
- 4** Select **Create a new IIS Web site**, and then make sure the default site name is **SharePoint-80**.
- 5** In the Port field, make sure the default port number is **80**.
- 6** In the Path field, make sure the path is set to **C:\inetpub\wwwroot\wss\Virtual Directories\80**.
- 7** From the Authentication Provider section, select **NTLM**.
- 8** From the Allow Anonymous section, select **Yes**.

- 9 In the Use Secure Sockets Layer (SSL) section, select **Yes** if you are using SSL. Otherwise, select **No**.
- 10 In the Load Balanced URL field, replace the default server host name with the virtual IP address of your cluster.
- 11 From the Application Pool section, make sure the default site name is **SharePoint-80**.
- 12 Select **Predefined**, and then select **Network Service** or its equivalent from the drop-down menu.
Leave all the other settings as they are.
- 13 Click **OK** to create the application.

Creating the SharePoint site collection

- 1 Open SharePoint Central Administration.
- 2 Click **Application Management > Create site collection**.
- 3 From the Web application drop-down menu, select **SharePoint-80**.
- 4 In the Title and Description field, type the title and description for the site collection.
- 5 From the Web Site Address section, under URL, type the IP address of your cluster.
- 6 From the Template Selection section, in the “Select a template” list, select **Blank Site**.
- 7 In the Primary Site Collection Administrator field, type your domain user name.
- 8 In the Secondary Site Collection Administrator field, type the administrator account name of the local server.
Make sure to include the local domain name (for example, **FARM01SVR1\administrator**).
- 9 Click **OK**.

Adding the second Web server

- 1 Run the SharePoint Products and Technologies Configuration Wizard.
- 2 Connect to an existing farm.
- 3 Type the name of your database server, including the Named Instance, and then click **Retrieve Database Names**.
This automatically populates the Database Name and the Username fields.
- 4 Type the domain user's password, and then click **Next**.
- 5 In the Summary page, click **Next**.
- 6 From the Configuration Successful page, click **Finish**.

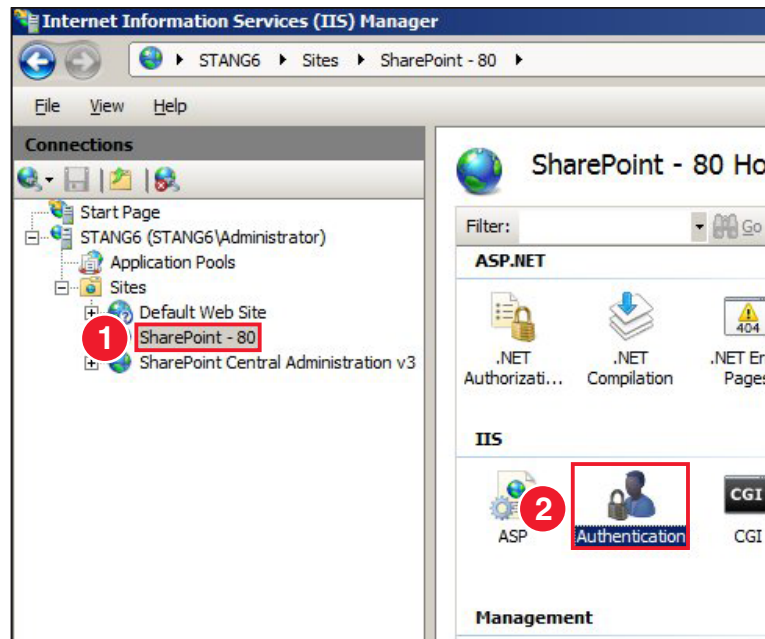
Installing Windows SharePoint Services 3.0 (Basic)

- 1 Install the Microsoft Windows SharePoint Services 3.0 on a computer running Windows Server 2003 or Windows Server 2008.
- 2 In the “Choose the installation you want” page, click **Basic**.
- 3 When setup finishes, make sure the **Run the SharePoint Products and Technologies Configuration Wizard now** check box is selected on the prompt that appears, and then click **Close** to start the wizard.

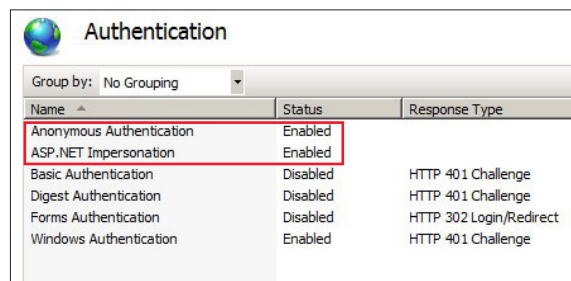
For more information, see the documentation for installation and configuration of WSS on standalone servers on the Windows SharePoint Web site.

Configuring IIS and WSS after installation

- 1 Open Internet Information Services (IIS) Manager.
- 2 From the left pane, click + to expand Sites, if necessary, and then click **SharePoint- 80**.
- 3 From the display pane, double-click **Authentication**.



- 4 Make sure that Anonymous Authentication and ASP.NET Impersonation are enabled.



Configuring Alternate Access Mappings (AAMs)

SharePoint will default to using the host name of the server when creating the URLs required for access. To make the host name unique wherever on the network the server resides, use the fully qualified domain name (FQDN) or the IP address of the server.

- 1 Open SharePoint Central Administration.
- 2 Click **Operations**.
- 3 From the Global Configuration section, click **Alternate access mappings**.

4 Set Public URLs to use the IP address of the SharePoint server.

- a** Navigate to:
Edit Public URLs > Alternate Access Mapping Collection menu > select **Change Alternate Access Mapping Collection** > **SharePoint-80**
- b** In the Default field, replace the host name with the IP address of the server.
Note: Do *not* delete **http://** from the field.
- c** Click **Save**.
- d** From the Alternate Access Mappings List, navigate to:
Edit Public URLs > Alternate Access Mapping Collection menu > select **Change Alternate Access Mapping Collection** > **Central Administration**
- e** In the Default field, replace the host name with the IP address you used earlier.
Note: Do *not* delete **http://** and the port number from the field.
- f** Click **Save**.

5 Set Internal URLs to use the FQDN of the SharePoint server.

Note: Creating another internal URL for mapping the site will properly trigger all event calls from requests, whether they come from the FQDN or IP address.

- a** Navigate to:
Add Internal URL > Alternate Access Mapping Collection menu > select **Change Alternate Access Mapping Collection** > **SharePoint-80**
- b** Type the Internal URL. Use either the FQDN of the server.
- c** Click **Save**.
- d** From the Alternate Access Mappings List, navigate to:
Add Internal URL > Alternate Access Mapping Collection menu > select **Change Alternate Access Mapping Collection** > **Central Administration**.
- e** Type the Internal URL using the host name and port number. For example, **http://hostname:port**, where **port** is the Central Administration port you used for the Public URL.
- f** Click **Save**.

Note: If you encounter issues with setting up your Alternate Access Mappings and cannot get into SharePoint Central Administration, then uninstall SharePoint and install again

Installing the Solutions Platform

Installing the Solutions Platform

1 Run the Lexmark Solutions Platform installer.

2 Verify that the prerequisites are met.

Note: The verification process is done in the background as the installer is starting up. If any of the prerequisites described in this *Installation Guide* are missing, then the installer shows an error message and fails. Make sure all requirements are completely installed before proceeding with the installation.

3 Choose a language.

4 Accept the End User License Agreement (EULA).

5 Type the URL of the SharePoint site you created earlier.

Note: Click **What is this?** to open the list of installed Web applications for this installation. These are the only valid Web application URLs on the server. Use one of these URLs. The URL should be in the form **http://ipaddress:port/**. It should match the IP address specified when creating Alternate Access Mappings (AAMs) and the SharePoint site on Port 80.

6 Type your e-mail address.

7 Verify that the administrator account you used to install SharePoint is correct.

Notes:

- Make sure the domain name here is correct as this may default to the local host name.
- The site owner's user account needs to be an Administrator account on the Windows server to be able to install and deploy solutions. This user becomes the Super Administrator of the site being created within the Web application. In cases where the server is not part of a domain, the computer name is used as a domain prefix for the user (for example, **MACHINENAME\Administrator**).

Adding a license

Configuring group permissions

Before adding a license, make sure to configure group permissions first.

1 Navigate to the following folder:

c:\Program Files\Common Files\Microsoft Shared\Web Server Extensions\12

2 Right-click **Config**, and then click **Security**.

3 From the Security tab, select the **WSS_WPG** group, and then allow read and write permissions for this group.

Uploading the license file

1 From your Web browser, access the Lexmark Solutions Platform.

2 From the Home tab, in the System section, click **Licensing**.

- 3 Click **Browse** to upload license files.
- 4 If necessary, click **Overwrite**.
- 5 Click **Upload**.

Notes:

- The Solutions Platform supports modular licensing. Install licenses for each of the components (Print Release, Accounting, and My eTask) separately to add them to the Solutions Platform.
- The Solutions Platform can support multiple license files. For example, a customer can initially have a license file for 100 devices, and then later purchase another license file for 100 additional devices. Both license files should be uploaded to be able to support all 200 devices.
- If uploading multiple licenses, you can either upload a license file one at a time or zip them into a single file and upload only the zipped file. If uploading a zipped file, make sure files are zipped at the root directory to avoid creating unnecessary folders.

Upgrading the Solutions Platform

Upgrade your system to version 1.3.0 to take advantage of the new and improved features and functionality.

When upgrading, make sure:

- You use the Solutions Platform version 1.3.0 installer package for new installations as well as for upgrading your system to 1.3.0. There is no need to uninstall the previous installation. Run the installer, and it will automatically upgrade the system.
- You update the LDAP Membership, Active Directory, or List Membership version references in the web.config file from `v1.2.0.0` to `v1.3.0.0` when configuring the membership providers. The XML code in “Configuring the membership provider manually” on page 29 has been updated to reflect this change.
- You revert Alternate Access Mappings to use host names instead of the IP address or fully qualified domain name (FQDN) before upgrading the system.

Creating a Virtual Directory

For IIS 7.0

- 1 Open Internet Information Services (IIS) Manager.
- 2 On the left pane, in the Sites menu tree, right-click **SharePoint-80**.
- 3 Click **Add Virtual Directory**.
- 4 In the Alias field, type **PrintJobs**.
Note: The alias must be called “PrintJobs” during setup. This can be changed later.
- 5 In the “Physical path” field, type the path to the directory that contains the content for the Virtual Directory.
- 6 Click **Connect as** to specify provide credentials in order to access the Virtual Directory.
If you do not use specific credentials, then select **Application user (pass-thru authentication)**.
- 7 Click **Test Settings** to verify your settings for the Virtual Directory, and then click **OK**.

For IIS 6.0

- 1 Open Internet Information Services (IIS) Manager.
- 2 On the left pane, in the Web Sites menu tree, right-click **SharePoint-80**.
- 3 Click **New > Virtual Directory**.
The Virtual Directory Creation Wizard opens.
- 4 In the Alias field, type **PrintJobs**, and then click **Next**.
Note: The alias must be called “PrintJobs” during setup. This can be changed later.
- 5 Browse or type the path to the directory that contains the content for the Virtual Directory, and then click **Next**.
- 6 Type the user name and password to use for access to the Virtual Directory, and then click **Next**.
- 7 Type the password again to confirm, and then click **OK**.
- 8 Select the check box of the access permission that you want to allow.
- 9 If necessary, click **Yes** to confirm selected permissions, and then click **Finish**.

Note: Make sure you use the IP address or the Fully Qualified Domain Name (FQDN) when creating the virtual directory. Using the host name causes trouble and should be avoided.

Verifying the version of ASP.NET installed

- 1 Open Internet Information Services (IIS) Manager.
- 2 On the left pane, under Web Sites, expand **SharePoint-80**.
- 3 Right-click **PrintJobs**, and then click **Properties**.
- 4 On the Properties dialog, click the **ASP.NET** tab.
- 5 Make sure the Virtual Directory is using version 2.0 or later of ASP.NET.

Configuring the URI location and UNC path location

- 1 Access the Lexmark Solutions Platform.
- 2 Click the **Print Release** tab > **Print Release Settings**.
- 3 From the Print Release Settings page, edit the following settings as necessary.
 - **URI Location**—Type the path of the Virtual Directory (for example, **http://servername/PrintJobs**).
Note: Make sure you use the IP address or the Fully Qualified Domain Name (FQDN) when entering the URI location. Using the host name causes trouble and should be avoided.
 - **UNC Path Location**—Type the path of the physical directory where all print jobs should be stored (for example, **\\servername\sharedfolder\subfolder** or **C:\SolutionsPlatform\PrintJobsFileRepository**).
 - **UNC Path Username**—Type the user name to access the UNC location.
Note: Do not include the domain name when typing the user name in this field.
 - **UNC Path Password**—Type the password to access the UNC location.
 - **UNC Path Domain**—Type the domain where the UNC path location resides.

Resetting IIS

After configuring the URI location and UNC path location, it is recommended that you reboot IIS to make sure the system is running and up-to-date.

- 1 Open a command prompt shell window.
- 2 At the command prompt, type `iisreset /noforce`.
- 3 Press **Enter**.

Increasing TPA log capacity

In the Event Viewer, TPA is shown as **TransportProtocolAdapter**. Its Windows Service name is **Lexmark Transport Protocol Adapter**.

- 1 Open the Event Viewer.
- 2 Right-click **TransportProtocolAdapter**, and then click **Properties**.
- 3 In the “Log size” section, select **Overwrite events as needed**.
- 4 Click **OK**.

Configuring the membership provider automatically

To validate user accounts, configure the Lexmark Solutions Platform to store these accounts in the system using lists or to use the Lightweight Directory Access Protocol (LDAP) as membership provider.

To configure membership provider automatically, download the **WebConfigHelper** tool from the Lexmark Solutions Platform Web site for free.

Note: Use *only one* membership provider to authenticate users for Solutions Platform. LDAP is the preferred authentication option. If the customer does not have LDAP and Active Directory, then use List Membership Provider.

WebConfigHelper options

Use	To
<code>-l, --createLdapMembership=VALUE</code>	Create LDAP Membership Provider. The default value is FALSE.
<code>-c, --createListMembership=VALUE</code>	Create List Membership Provider. The default value is FALSE.
<code>-r, --createLdapRole=VALUE</code>	Create LDAP Role Provider. The default value is FALSE.
<code>-o, --createListRole=VALUE</code>	Create List Role Provider. The default value is FALSE.
<code>-a, --isSharePointCentralAdministrationConfig=VALUE</code>	Specify whether this is the web.config file for the SharePoint v3.0 Central Administration site. The default value is FALSE.

Use	To
<code>-p, --webConfigAbsolutePath=VALUE</code>	Specify the absolute path to the web.config file. The default path is <code>c:/inetpub/wwwroot/wss/VirtualDirectories/80/web.config</code>
<code>-m, --MembershipSettingsAbsolutePath=VALUE</code>	Specify the absolute path to the ini settings file of the membership provider.
<code>-s, --RoleSettingsAbsolutePath=VALUE</code>	Specify the absolute path to the ini settings file of the role provider.
<code>-t, --testLdapConnection=VALUE</code>	Test the LDAP Connection with supplied ini settings file. The default value is FALSE.
<code>-d, --detectWebConfigLocations=VALUE</code>	Enable the tool to automatically detect the location of the web.config file. The default value is FALSE.
<code>-n, --defaultSharePointSiteName=VALUE</code>	Specify the IIS site name where Solutions Platform is installed. This is used for automatic detection.
<code>-h, --help</code>	<ul style="list-style-type: none"> • Show the list of options. • Exit the tool.
<code>-f, --save</code>	Save the settings as defaults.

For more information, see the *Readme* file and sample settings file that came with the tool.

Configuring the membership provider manually

Notes:

- Use *only one* membership provider to authenticate users for the Solutions Platform. Non-Active Directory Lightweight Directory Access Protocol (LDAP) is the preferred authentication option.
- If the customer does not have LDAP, then use Active Directory as the membership provider.
- If the customer does not have LDAP and Active Directory, then use List Membership Provider.
- Role manager is optional. It is useful for importing groups and allowing all authenticated users to log in, but it is not required for a working system.
- Make sure you install the Solutions Platform application first before editing the web.config file.
- After configuring the web.config file, enable your membership provider for site collection from the SharePoint Central Administration. For more information, see “Enabling membership provider for site collection” on page 33.

Configuring LDAP or Active Directory Membership Provider

- 1 Locate the following file, and then open it in a text editor: `C:\inetpub\wwwroot\wss\VirtualDirectories\80\web.config`.
- 2 Add the following XML nodes to register LDAP or Active Directory as an authentication option.

Notes:

- If you are not using an optional value, then remove it from the XML file to avoid errors and failures.
- If you encounter errors, then navigate to **Administrative Tools > Event Viewer** for detailed messages and information.
- The examples are for Lexmark's LDAP system.

```
<configuration>
  ...
  <system.web>
    ...
    <membership defaultProvider="LdapMembership">
      <providers>
        <add name="LdapMembership"
          type="Lexmark.SharePointSolutions.Core.LdapMembershipProvider.LdapMembershipProvider,
            Lexmark.SPS.Core.LdapMembershipProvider, Version=1.3.0.0, Culture=neutral,
            PublicKeyToken=cd98fdb728e8c0c6"
          server="testdirectory.ap.lexmark.com"
          searchBase="dc=testdirectory,dc=ap,dc=Lexmark,dc=com"
          lookupAuthType="Basic"
          lookupUserDN="cn=manager,dc=testdirectory,dc=ap,dc=Lexmark,dc=com"
          lookupPassword="password"
          lookupUseSSL="false"
          lookupPort="389"
          writeAuthType="Basic"
          writeUserDN="cn=manager,dc=testdirectory,dc=ap,dc=Lexmark,dc=com"
          writePassword="supersecret"
          writeUseSSL="false"
          writePort="389"
          validateAuthType="Basic"
          validateUseSSL="false"
          validatePort="389"
          uidProperty="uid"
          emailProperty="mail"
          displayNameProperty="sn"
          badgeIdProperty="pager" />
      </providers>
    </membership>
    <roleManager defaultProvider="LdapRole" enabled="true">
      <providers>
        <add name="LdapRole"
          type="Lexmark.SharePointSolutions.Core.LdapMembershipProvider.LdapRoleProvider,
            Lexmark.SPS.Core.LdapMembershipProvider, Version=1.3.0.0, Culture=neutral,
            PublicKeyToken=cd98fdb728e8c0c6"
          applicationName="name"
          server="host name or IP address"
          authType="authentication type"
          useSSL="true or false"
          port="port"
          lookupUserDN="dn"
          lookupPassword="password"
          lookupDomain="domain"
          groupContainer="value"
          groupFilter="value"
          groupNameAttribute="value"
          groupMemberAttribute="value"
          userSearchBase="value"
          userUidAttribute="value"
          timeout="timeout" />
      </providers>
```

```

        </roleManager>
        ...
    </system.web>
    ...
</configuration>

```

where

applicationName	= option application name, defaults to application virtual path
server	= LDAP server address (eg. directory.lex.lexmark.com)
searchBase	= required base on which to search for users (eg. ou=Employees,o=Lexmark)
lookupAuthType	= Anonymous, Basic, Digest, Dpa, Kerberos, Msn, Negotiate, Ntlm or Sicily (authentication type for lookups, optional default is Anonymous)
lookupUserDN	= user DN for application lookups (optional, not required for anonymous connections, eg. uid=XXX,ou=Employees,o=Lexmark)
lookupPassword	= password corresponding to lookupUser (optional)
lookupuseSSL	= true or false (optional, defaults to false for Anonymous authentication, true for others)
lookupPort	= communication port (optional, defaults to 389 for clear text and 636 for SSL)
lookupDomain	= domain (optional)
WriteAuthType	= Anonymous, Basic, Digest, Dpa, Kerberos, Msn, Negotiate, Ntlm or Sicily (authentication type for user validation, optional, default is Basic)
WriteUserDN	= user DN for application lookups
WritePassword	= password corresponding to WriteUserDN
WriteUseSSL	= true or false (optional, defaults to false for Anonymous authentication, true for others)
WritePort	= communication port (optional, defaults to 389 for clear text and 636 for SSL)
WriteDomain	= domain (optional)
validateAuthType	= Anonymous, Basic, Digest, Dpa, Kerberos, Msn, Negotiate, Ntlm or Sicily (authentication type for user validation, optional, default is Basic)
uidProperty	= user id property on user object, required (eg. uid)
displayNameProperty	= display name property on user object (eg. displayname)
emailProperty	= email property on user object, optional (should not be specified for Lexmark LDAP because this property is not indexed for searches)
badgeIdproperty	= badge id property on user object, optional
timeout	= timeout (in seconds, should be fairly high, say 300 seconds for Lexmark, to import all users from LDAP)
authType	= same as lookupAuthType above
groupContainer	= required base on which to search for groups (eg. ou=Groups,o=Lexmark)
groupFilter	= an LDAP search sub-string that defines a group object (eg. ObjectClass=groupOfUniquenames)
groupNameAttribute	= the name attribute on a group object (eg. cn)
groupMemberAttribute	= the name of a member attribute on a group object (eg. uniquemember). The value in this attribute is the DN of a user.
userSearchBase	= same as searchBase above
userUidAttribute	= same as uidProperty above

3 Locate the following file, and then open it in a text editor: **C:\inetpub\wwwroot\wss\VirtualDirectories\27644\web.config.**

Note: The port number may be different. This is the SharePoint administration site.

- 4 Add the same XML nodes as in step 2 on page 29 to register the LDAP or Active Directory component with the SharePoint administrator application.

This lets you choose a site administrator for the site collection using the administrator application. The membership node is the same except that the **defaultProvider** attribute is omitted as shown in the following. The **roleManager** node is the same except that the **defaultProvider** and enabled attributes are omitted.

```
<configuration>
  ...
  <system.web>
    ...
    <membership>
      ...
    </membership>
    <roleManager>
      ...
    </roleManager>
  </system.web>
  ...
</configuration>
```

Configuring List Membership Provider

- 1 Locate the following file, and then open it in a text editor: `C:\inetpub\wwwroot\wss\VirtualDirectories\80\web.config`.
- 2 Add the following XML nodes to register the SharePoint List component as an authentication option:

```
<configuration>
  ...
  <system.web>
    ...
    <membership defaultProvider="ListMembership">
      <providers>
        <add name="ListMembership"
          type="Lexmark.SharePointSolutions.Core.SPListMembershipProvider.SPListMembershipProvider,
            Lexmark.SPS.Core.SPListMembershipProvider, Version=1.3.0.0, Culture=neutral,
            PublicKeyToken=b13181d43a8e8c47" spListName="Users" />
      </providers>
    </membership>
    <roleManager defaultProvider="ListRole" enabled="true">
      <providers>
        <add name="ListRole"
          type="Lexmark.SharePointSolutions.Core.SPListMembershipProvider.SPListRoleProvider,
            Lexmark.SPS.Core.SPListMembershipProvider, Version=1.3.0.0, Culture=neutral,
            PublicKeyToken=b13181d43a8e8c47" />
      </providers>
    </roleManager>
  </system.web>
  ...
</configuration>
```

where `spListName` = option list name, defaults to a custom "Users" list within SharePoint provided by the Core team.

- 3 Locate the following file, and then open it in a text editor: `C:\inetpub\wwwroot\wss\VirtualDirectories\27644\web.config`.

Note: The port number may be different. This is the SharePoint administration site.

- 4 Add the same XML nodes as in step 2 to register the List component with the SharePoint administrator application. This lets you choose a site administrator for the site collection using the administrator application. The membership node is the same except that the **defaultProvider** attribute is omitted as shown in the following. The **roleManager** node is the same except that the **defaultProvider** and **enabled** attributes are omitted.

```
<configuration>
...
<system.web>
...
  <membership>
    ...
  </membership>
  <roleManager>
    ...
  </roleManager>
  ...
</system.web>
...
</configuration>
```

Enabling membership provider for site collection

- 1 Open SharePoint Central Administration.
 - 2 Click the **Application Management** tab.
 - 3 In the SharePoint Web Application Management section, click **Web application list**.
 - 4 If necessary, select **SharePoint-80**.
 - 5 In the Application Security section, click **Authentication Providers**, and then click **Default**.
 - 6 In the Authentication type section, select **Forms**, and then select the **Enable anonymous access** check box.
 - 7 In the “Membership provider name” field, type **LdapMembership** or **ListMembership**, depending on the authentication option you are using.
 - 8 In the “Role manager name” field, type **LdapRole** or **ListRole**, depending on the authentication option you are using, and then click **Save**.
- Note:** Restart IIS after saving the options for the changes to take effect.
- 9 Click the **Application Management** tab.
 - 10 In the SharePoint Site Management section, click **Site collection administrators**.
 - 11 From the Site Collection drop-down menu, select **Change Site Collection**.
 - 12 From the list of sites, select **/sites/Lexmark**, and then click **OK**.

- 13** Type the user name of the primary site collection administrator.

If necessary, type the user name of a secondary site collection administrator.

Note: For List Membership, the initial user name must be **admin**, and the password must be **admin** as well. This is a preset account to allow you to log in for the first time. You can import or create other users from the Users page later.


- 14** Click **OK**.

Adding a print release queue on a client workstation or print server

Adding a new printer

- 1** Make sure you have installed the PCL5, PCLXL, or PostScript Lexmark Universal Driver appropriate for your operating system, available from <http://support.lexmark.com>.

Note: If you are installing the Universal Print Driver for the first time, then you will be prompted to add a new Windows printer during the driver installation process. You can proceed to step 6 to add the printer during installation.

- 2** Click , or click **Start** and then click **Run**.
- 3** In the Start Search or Run box, type **control printers**.
- 4** Press **Enter**, or click **OK**.
The printers folder opens.
- 5** Click **Add a printer > Next**.
- 6** Select a local printer. In Windows XP, clear the **Automatically detect and install my Plug and Play printer** check box.
- 7** Click **Next**.
- 8** Select **Create a new port**.
- 9** From the “Type of port” drop-down menu, select **Standard TCP/IP Port**, and then click **Next**.
The Add Standard TCP/IP Printer Port Wizard appears. If necessary, click **Next** again.

Adding a new TCP/IP port

- 1** In the “Hostname or IP address” field or the “Printer Name or IP Address” field, type the address of the server for the Solutions Platform (*not* the address of the printer).
Note: If you do not know the address, then contact the server administrator.
- 2** In the Port Name field, type a descriptive port name (for example, “Print Release Server”). In Windows 7, clear the **Query the printer and automatically select the driver to use** check box.
- 3** Click **Next**.
- 4** When prompted for additional port information, select **Custom**, and then click **Settings**.

- 5 In the Port Number field, type the port number used to submit print release jobs, and then click **OK**.

Note: Leave the default port number of 9100 unless your server uses a different port. If you do not know the correct port number, then contact the server administrator.

- 6 Click **Next**, and then click **Finish** if necessary.

Installing printer software

- 1 When prompted to install printer software, click **Have Disk**.
- 2 In the “Copy manufacturer's files from” field, enter the location where the Lexmark Universal Print Driver files were installed, or click **Browse** and browse to the INF file for the driver.
- 3 Click **OK**.
- 4 Make sure **Lexmark Universal**, **Lexmark Universal XL**, or **Lexmark Universal PS3** is selected, and then click **Next**.
- 5 If prompted, select **Use the driver that is currently installed** or **Keep existing driver**, and then click **Next**.
- 6 Complete the remaining steps in the Add Printer Wizard. Enter a descriptive name for the print release queue, select whether to use the new print queue as the default, and then print a test page if you want.

Notes:

- In Windows XP, you can also select whether to share the new print release queue for installation on a print server. If you want to share the print release queue in Windows 7, then edit the printer properties after the printer is added.
- If you print a test page, then it is submitted to the print release queue and can be released from a connected printer like any other job.

Changing the logging level

The Solutions Platform supports **WARN** logging level as the default. For troubleshooting or information purposes, you can change the logging level accordingly.

- **DEBUG**—This level logs all of the details related to a specific event or activity on the server. This is the highest level of logging. If logging is set to DEBUG, all other levels of logging information are displayed in the log file.
- **ERROR**—This level logs only error conditions. The ERROR level provides the smallest amount of logging information.
- **INFO**—This level logs information about workflow. It generally explains how an event or activity occurs.
- **WARN**—This level logs information when an event or activity is completed successfully, but there are issues related to it.

- 1 Locate the following file, and then open it in a text editor:

```
C:\Program Files\Common Files\Microsoft Shared\Web Server Extensions  
\12\CONFIG\LexmarkEntSolSuite\LexmarkEntSolSuite_log4net.config.
```

Separate log files are created for each site as follows:

Log for Home site: Home.log

Log for Accounting site: Accounting.log

Log for Print Release site: PrintRelease.log

Log for My e-Task site: MyETask.log

These log files are located in **C:\Program Files\Common Files\Microsoft Shared\Web Server Extensions\12\LOGS\Lexmark**.

2 Change the level value.

```
<root>
<level value="WARN" /> <!--values: ERROR, INFO, WARN, DEBUG-->
<appender-ref ref="LexmarkDocumentAccountingRollingFileAppender" />
<appender-ref ref="LexmarkPrintReleaseRollingFileAppender" />
<appender-ref ref="HomeRollingFileAppender" />
<appender-ref ref="MyETaskRollingFileAppender" />
</root>
```

Modifying the change log retention time

Change the number of days events are kept in the change log.

- 1 Open SharePoint Central Administration.
- 2 Click **Application Management** > **Web application general settings**.
- 3 From the Change Log section, select **After**, and then enter a number from 3 to 7 in the number of days field.
- 4 Click **OK**.

Turning off the recycle bin settings

Turn off the recycle bin status to empty all the Recycle Bins in the Web application.

- 1 Open SharePoint Central Administration.
- 2 Click **Application Management** > **Web application general settings**.
- 3 From the Recycle Bin section, select **Off** in the Recycle Bin Status menu.
- 4 Click **OK**.

Disabling list versioning

By default, the site creates versions of each list record, adding to the size of the content database. To minimize the size of the content database, turn off list versioning.

Note: You must have site collection administrator privileges to view the list versioning settings.

- 1 From your Web browser, access the Lexmark Solutions Platform.
- 2 In the URL field, type the URL of the site where you want to disable the versioning.
 - **Home**—`http://server/sites/Lexmark/_layouts/settings.aspx`
 - **Print Release**—`http://server/sites/Lexmark/PrintRelease/settings.aspx`
 - **Accounting**—`http://server/sites/Lexmark/Accounting/settings.aspx`
 - **My e-Task**—`http://server/sites/Lexmark/MyProfiles/settings.aspx`

Note: Replace *server* with the IP address of the server for the solution.

- 3 In the Site Administration section, click **Site libraries and lists**.
- 4 Select the list or content that you want to customize.
- 5 In the General Settings section, click **Versioning settings**.

6 In the Item Version History section, select **No**.

7 Click **OK**.

Turning off the search visibility of a site

To minimize the size of the content database, disable the search visibility for each site in the solution.

1 From your Web browser, access the Lexmark Solutions Platform.

2 In the URL field, type the URL of the site.

- **Home**—`http://server/sites/Lexmark/_layouts/srchvis.aspx`
- **Print Release**—`http://server/sites/Lexmark/PrintRelease/srchvis.aspx`
- **Accounting**—`http://server/sites/Lexmark/Accounting/srchvis.aspx`
- **My e-Task**—`http://server/sites/Lexmark/MyProfiles/srchvis.aspx`

Note: Replace *server* with the IP address of the server for the solution.

3 In the Indexing Site Content section, select **No**.

4 Click **OK**.

Troubleshooting

An application error has occurred

This error message may appear when logging into SharePoint.

CHECK THE EVENT VIEWER FOR ERRORS IN THE WEB.CONFIG FILE

- 1 Click **Start > Administrative Tools > Event Viewer > Application**.
- 2 View the recent errors, taking note of those specific to the Solutions Platform and SharePoint.
Messages in the Event Viewer indicate the location of the root cause of the issue in the web.config file. The web.config file is located in **c:\inetpub\wwwroot\wss\VirtualDirectories**.
- 3 In the web.config file, search for the error or line number specified in the Event Viewer, and then fix it accordingly.
If there is no line number specified in the Event Viewer, then the most likely issue in the web.config file is the presence of two sets of **<control> </control>** tags. Delete the empty **<control> </control>** tag.
- 4 Log in to SharePoint again.

Application is unavailable

This error message may appear when launching SharePoint on Windows 2003.

RESTART IIS 6.0

- 1 Make sure the Application Layer Gateway Service is started.
Click **Start > Administrative Tools > Services**.
- 2 Stop IIS on the server.
 - a Click **Start > Administrative Tools > Internet Information Services (IIS)**.
 - b From the IIS Manager, right-click the server name node, and then click **All Tasks > Stop IIS**.
- 3 Start the Task Manager.
 - a Right-click the toolbar at the bottom of the screen, and then click **Task Manager**.
 - b From the Processes tab, click the **Show processes from all users** check box.
 - c End all w3wp.exe processes.
- 4 Restart IIS on the server.
 - a Click **Start > Administrative Tools > Internet Information Services (IIS)**.
 - b From the IIS Manager, right-click the server name node, and then click **All Tasks > Restart IIS**.
- 5 Check if you can now log in to SharePoint.

Cannot install solution

Try one or more of the following:

MAKE SURE ALL THE PREREQUISITES ARE MET

For more information, see “Getting started” on page 5.

MAKE SURE YOU USE THE IP ADDRESS WHEN CONFIGURING ALTERNATE ACCESS MAPPINGS

Use the IP address or the fully qualified domain name (FQDN) when configuring Alternate Access Mappings. Using the host name causes issues and should be avoided.

CHECK PORT 9100 AND RESET SERVICES

Make sure Port 9100 is enabled and listening. On the command prompt, type `netstat -a`.

If it is not enabled, then reset IIS by typing `iisreset /noforce` on the command prompt, and then restart the Lexmark Transport Protocol Adapter (LTPA) service.

UNINSTALL AND THEN INSTALL THE SOLUTIONS PLATFORM

Launch the `uninstaller.exe` file from `c:\Program Files\<installation directory>`.

Jobs do not appear in the print release queue

Try one or more of the following:

MAKE SURE THE VIRTUAL DIRECTORY AND UNC PATH SETTINGS ARE CONFIGURED PROPERLY

- 1 Make sure IIS and the Lexmark Transport Protocol Agent (LTPA) are running.

Click **Start > Administrative Tools > Services**.

- 2 Make sure the URI location is identical to the Virtual Directory setup.

- a Log in to the Solutions Platform Web portal as an administrator.

- b Click the **Print Release** tab > **Print Release Settings**.

- c Make sure the URI location is identical to the Virtual Directory, with the format `http://ipaddress/VirtualDirectoryName`.

- d Make sure the UNC path location and UNC path credentials are correct.

Note: For the connection to work, make sure the correct slash (“\” or “/”) is used in either of these settings.

- e Make sure the domain and user name entries are typed separately in their respective fields.


Note: The user name must not contain the domain name. It must not have the `domainname\username` format.

- 3 Make sure the hard drive where the network share is housed has sufficient space for writing files.

- 4 Verify that the user credentials have the permissions required to write files to the network share.
 - a Using the credentials specified in the UNC path user name and password fields, create a **test.txt** file, and then save it in the network share.
 - b Open a Web browser, and then type the location of the test.txt file, in the format **`http://ipaddress/VirtualDirectoryName/test.txt`**.
The test file you created should appear. If it does not appear, then check the settings for the Virtual Directory in IIS to make sure that it is pointed to the correct location with valid authentication.
Note: If you are using pass-through authentication, then change this setting to connect using the static credentials used on the share and when restarting IIS.
 - c If the test.txt file opened correctly in the Virtual Directory, then do the following:
 - 1 Stop IIS and then restart LTPA.
 - 2 Open the Task Manager, and then end all w3wp.exe processes.
 - 3 Restart IIS.
 - 4 Send another print job to verify that it now appears in the print release queue.

CHECK THE SOLUTIONS PLATFORM SERVER ADDRESS

Make sure you provided the correct IP address for the Solutions Platform server when you installed the print release queue on your workstation or print server. The Windows Add Printer Wizard allows you to complete the installation successfully as long as you provide a valid IP address, even if it is not the correct address for the Solutions Platform server.

- 1 Click , or click **Start** and then click **Run**.
- 2 In the Start Search or Run dialog, type **control printers**.
- 3 Press **Enter**, or click **OK**.
The printers folder opens.
- 4 Right-click the print release queue, and then click **Printer properties** or **Properties**.
- 5 Click the **Ports** tab > **Configure Port**.
- 6 Make sure the address in the "Printer Name or IP Address" field is the correct address for the Solutions Platform server.

MAKE SURE TO USE THE IP ADDRESS WHEN CREATING THE VIRTUAL DIRECTORY

Make sure to use the IP address or the fully qualified domain name (FQDN) when creating the Virtual Directory and when entering the URI location on the Solutions Platform server. Using the host name causes issues and should be avoided.

MAKE SURE ANONYMOUS ACCESS IS ENABLED

Enabling anonymous access from the Internet Information Services (IIS) Manager

- 1 Open the IIS Manager.
- 2 In the left pane, click **SharePoint-80** in the Sites menu tree.

- 3 In the right pane, double-click **Authentication**.
- 4 From the Authentication page, make sure that Anonymous Authentication is enabled.

Enabling anonymous access from the SharePoint Central Administration

- 1 Open SharePoint Central Administration.
- 2 Click the **Application Management** tab.
- 3 In the SharePoint Web Application Management section, click **Web application list**.
- 4 If necessary, select **SharePoint-80**.
- 5 In the Application Security section, click **Authentication Providers**.
- 6 In the Anonymous Access section, make sure the **Enable anonymous access** check box is selected.

Jobs do not print when released from the printer

MAKE SURE THE VIRTUAL DIRECTORY AND URI LOCATION ARE CONFIGURED PROPERLY

- 1 Create a **test.txt** file, and then save it in the network share or in the physical folder you specified when creating the Virtual Directory.
- 2 Log in to the Solutions Platform Web portal as an administrator.
- 3 Click the **Print Release** tab > **Print Release Settings**.
- 4 Copy the URI location.
- 5 Paste it on the Web browser URL field, and then add **test.txt**.
The address on the browser should now have the format
http://ipaddress/VirtualDirectoryName/test.txt.
- 6 Press **Enter**, and then check if the file opens properly.
- 7 If the file does not open properly, then there is an issue with the permissions on the Print Jobs folder or the Virtual Directory settings within IIS. Check these settings again and make sure they are correct.
- 8 If the file opens properly, then make sure the printer can resolve the server name in your URI location by using telnet on Port 10000.

Your URI may be using a host name that the printer cannot resolve without a change to the DNS server. Change this to an IP address or a fully qualified domain name (FQDN).

Notices

Edition notice

January 2012

The following paragraph does not apply to any country where such provisions are inconsistent with local law:
LEXMARK INTERNATIONAL, INC., PROVIDES THIS PUBLICATION “AS IS” WITHOUT WARRANTY OF ANY KIND, EITHER EXPRESS OR IMPLIED, INCLUDING, BUT NOT LIMITED TO, THE IMPLIED WARRANTIES OF MERCHANTABILITY OR FITNESS FOR A PARTICULAR PURPOSE. Some states do not allow disclaimer of express or implied warranties in certain transactions; therefore, this statement may not apply to you.

This publication could include technical inaccuracies or typographical errors. Changes are periodically made to the information herein; these changes will be incorporated in later editions. Improvements or changes in the products or the programs described may be made at any time.

References in this publication to products, programs, or services do not imply that the manufacturer intends to make these available in all countries in which it operates. Any reference to a product, program, or service is not intended to state or imply that only that product, program, or service may be used. Any functionally equivalent product, program, or service that does not infringe any existing intellectual property right may be used instead. Evaluation and verification of operation in conjunction with other products, programs, or services, except those expressly designated by the manufacturer, are the user's responsibility.

For Lexmark technical support, visit support.lexmark.com.

For information on supplies and downloads, visit www.lexmark.com.

If you don't have access to the Internet, you can contact Lexmark by mail:

Lexmark International, Inc.
Bldg 004-2/CSC
740 New Circle Road NW
Lexington, KY 40550
USA

© 2012 Lexmark International, Inc.

All rights reserved.

Trademarks

Lexmark and Lexmark with diamond design are trademarks of Lexmark International, Inc., registered in the United States and/or other countries.

PCL® is a registered trademark of the Hewlett-Packard Company.

All other trademarks are the property of their respective owners.

UNITED STATES GOVERNMENT RIGHTS

This software and any accompanying documentation provided under this agreement are commercial computer software and documentation developed exclusively at private expense.

LEXMARK SOFTWARE LICENSE AGREEMENT

PLEASE READ CAREFULLY BEFORE INSTALLING AND/OR USING THIS SOFTWARE: This Software License Agreement ("License Agreement") is a legal agreement between you (either an individual or a single entity) and Lexmark International, Inc. ("Lexmark") that, to the extent your Lexmark product or Software Program is not otherwise subject to a written software license agreement between you and Lexmark or its suppliers, governs your use of any Software Program installed on or provided by Lexmark for use in connection with your Lexmark product. The term "Software Program" includes machine-readable instructions, audio/visual content (such as images and recordings), and associated media, printed materials and electronic documentation.

BY USING AND/OR INSTALLING THIS SOFTWARE, YOU AGREE TO BE BOUND BY ALL THE TERMS AND CONDITIONS OF THIS LICENSE AGREEMENT. IF YOU DO NOT SO AGREE, DO NOT INSTALL, COPY, DOWNLOAD, OR OTHERWISE USE THE SOFTWARE PROGRAM. IF YOU DO NOT AGREE WITH THE TERMS OF THIS LICENSE AGREEMENT, PROMPTLY RETURN THE PRODUCT UNUSED AND REQUEST A REFUND OF THE AMOUNT YOU PAID. IF YOU ARE INSTALLING THIS SOFTWARE PROGRAM FOR USE BY OTHER PARTIES, YOU AGREE TO INFORM THE USERS THAT USE OF THE SOFTWARE PROGRAM INDICATES ACCEPTANCE OF THESE TERMS.

- 1 STATEMENT OF LIMITED WARRANTY.** Lexmark warrants that the media (e.g., diskette or compact disk) on which the Software Program (if any) is furnished is free from defects in materials and workmanship under normal use during the warranty period. The warranty period is ninety (90) days and commences on the date the Software Program is delivered to the original end-user. This limited warranty applies only to Software Program media purchased new from Lexmark or an Authorized Lexmark Reseller or Distributor. Lexmark will replace the Software Program should it be determined that the media does not conform to this limited warranty.
- 2 DISCLAIMER AND LIMITATION OF WARRANTIES.** EXCEPT AS PROVIDED IN THIS LICENSE AGREEMENT AND TO THE MAXIMUM EXTENT PERMITTED BY APPLICABLE LAW, LEXMARK AND ITS SUPPLIERS PROVIDE THE SOFTWARE PROGRAM "AS IS" AND HEREBY DISCLAIM ALL OTHER WARRANTIES AND CONDITIONS, EITHER EXPRESS OR IMPLIED, INCLUDING, BUT NOT LIMITED TO, TITLE, NON-INFRINGEMENT, MERCHANTABILITY AND FITNESS FOR A PARTICULAR PURPOSE, AND ABSENCE OF VIRUSES, ALL WITH REGARD TO THE SOFTWARE PROGRAM. This Agreement is to be read in conjunction with certain statutory provisions, as that may be in force from time to time, that imply warranties or conditions or impose obligations on Lexmark that cannot be excluded or modified. If any such provisions apply, then to the extent Lexmark is able, Lexmark hereby limits its liability for breach of those provisions to one of the following: replacement of the Software Program or reimbursement of the price paid for the Software Program.
- 3 LICENSE GRANT.** Lexmark grants you the following rights provided you comply with all terms and conditions of this License Agreement:
 - a Use.** You may Use one copy of the Software Program. The term "Use" means storing, loading, installing, executing, or displaying the Software Program. If Lexmark has licensed the Software Program to you for concurrent use, you must limit the number of authorized users to the number specified in your agreement with Lexmark. You may not separate the components of the Software Program for use on more than one computer. You agree that you will not Use the Software Program, in whole or in part, in any manner that has the effect of overriding, modifying, eliminating, obscuring, altering or de-emphasizing the visual appearance of any trademark, trade name, trade dress or intellectual property notice that appears on any computer display screens normally generated by, or as a result of, the Software Program.
 - b Copying.** You may make one (1) copy of the Software Program solely for purposes of backup, archiving, or installation, provided the copy contains all of the original Software Program's proprietary notices. You may not copy the Software Program to any public or distributed network.
 - c Reservation of Rights.** The Software Program, including all fonts, is copyrighted and owned by Lexmark International, Inc. and/or its suppliers. Lexmark reserves all rights not expressly granted to you in this License Agreement.
 - d Freeware.** Notwithstanding the terms and conditions of this License Agreement, all or any portion of the Software Program that constitutes software provided under public license by third parties ("Freeware") is licensed to you subject to the terms and conditions of the software license agreement accompanying such

Freeware, whether in the form of a discrete agreement, shrink-wrap license, or electronic license terms at the time of download. Use of the Freeware by you shall be governed entirely by the terms and conditions of such license.

- 4 TRANSFER.** You may transfer the Software Program to another end-user. Any transfer must include all software components, media, printed materials, and this License Agreement and you may not retain copies of the Software Program or components thereof. The transfer may not be an indirect transfer, such as a consignment. Prior to the transfer, the end-user receiving the transferred Software Program must agree to all these License Agreement terms. Upon transfer of the Software Program, your license is automatically terminated. You may not rent, sublicense, or assign the Software Program except to the extent provided in this License Agreement.
- 5 UPGRADES.** To Use a Software Program identified as an upgrade, you must first be licensed to the original Software Program identified by Lexmark as eligible for the upgrade. After upgrading, you may no longer use the original Software Program that formed the basis for your upgrade eligibility.
- 6 LIMITATION ON REVERSE ENGINEERING.** You may not alter, reverse engineer, reverse assemble, reverse compile or otherwise translate the Software Program, except as and to the extent expressly permitted to do so by applicable law for the purposes of inter-operability, error correction, and security testing. If you have such statutory rights, you will notify Lexmark in writing of any intended reverse engineering, reverse assembly, or reverse compilation. You may not decrypt the Software Program unless necessary for the legitimate Use of the Software Program.
- 7 ADDITIONAL SOFTWARE.** This License Agreement applies to updates or supplements to the original Software Program provided by Lexmark unless Lexmark provides other terms along with the update or supplement.
- 8 LIMITATION OF REMEDIES.** To the maximum extent permitted by applicable law, the entire liability of Lexmark, its suppliers, affiliates, and resellers, and your exclusive remedy shall be as follows: Lexmark will provide the express limited warranty described above. If Lexmark does not remedy defective media as warranted, you may terminate your license and your money will be refunded upon the return of all of your copies of the Software Program.
- 9 LIMITATION OF LIABILITY.** To the maximum extent permitted by applicable law, for any claim arising out of Lexmark's limited warranty, or for any other claim whatsoever related to the subject matter of this Agreement, Lexmark's liability for all types of damages, regardless of the form of action or basis (including contract, breach, estoppel, negligence, misrepresentation, or tort), shall be limited to the greater of \$5,000 or the money paid to Lexmark or its authorized remarketers for the license hereunder for the Software Program that caused the damages or that is the subject matter of, or is directly related to, the cause of action.

IN NO EVENT WILL LEXMARK, ITS SUPPLIERS, SUBSIDIARIES, OR RESELLERS BE LIABLE FOR ANY SPECIAL, INCIDENTAL, INDIRECT, EXEMPLARY, PUNITIVE, OR CONSEQUENTIAL DAMAGES (INCLUDING BUT NOT LIMITED TO LOST PROFITS OR REVENUES, LOST SAVINGS, INTERRUPTION OF USE OR ANY LOSS OF, INACCURACY IN, OR DAMAGE TO, DATA OR RECORDS, FOR CLAIMS OF THIRD PARTIES, OR DAMAGE TO REAL OR TANGIBLE PROPERTY, FOR LOSS OF PRIVACY ARISING OUT OR IN ANY WAY RELATED TO THE USE OF OR INABILITY TO USE THE SOFTWARE PROGRAM, OR OTHERWISE IN CONNECTION WITH ANY PROVISION OF THIS LICENCE AGREEMENT), REGARDLESS OF THE NATURE OF THE CLAIM, INCLUDING BUT NOT LIMITED TO BREACH OF WARRANTY OR CONTRACT, TORT (INCLUDING NEGLIGENCE OR STRICT LIABILITY), AND EVEN IF LEXMARK, OR ITS SUPPLIERS, AFFILIATES, OR REMARKETERS HAVE BEEN ADVISED OF THE POSSIBILITY OF SUCH DAMAGES, OR FOR ANY CLAIM BY YOU BASED ON A THIRD-PARTY CLAIM, EXCEPT TO THE EXTENT THIS EXCLUSION OF DAMAGES IS DETERMINED LEGALLY INVALID. THE FOREGOING LIMITATIONS APPLY EVEN IF THE ABOVE-STATED REMEDIES FAIL OF THEIR ESSENTIAL PURPOSE.
- 10 TERM.** This License Agreement is effective unless terminated or rejected. You may reject or terminate this license at any time by destroying all copies of the Software Program, together with all modifications, documentation, and merged portions in any form, or as otherwise described herein. Lexmark may terminate your license upon notice if you fail to comply with any of the terms of this License Agreement. Upon such termination, you agree to destroy all copies of the Software Program together with all modifications, documentation, and merged portions in any form.
- 11 TAXES.** You agree that you are responsible for payment of any taxes including, without limitation, any goods and services and personal property taxes, resulting from this Agreement or your Use of the Software Program.

- 12** **LIMITATION ON ACTIONS.** No action, regardless of form, arising out of this Agreement may be brought by either party more than two years after the cause of action has arisen, except as provided under applicable law.
- 13** **APPLICABLE LAW.** This Agreement is governed non-exclusively by the laws of the country in which you acquired the Software Program (or, if that country has a federal system of government, then this Agreement will be governed by the laws of the political subdivision in which you acquired the Software). If you acquired the Software in the United States, the laws of the Commonwealth of Kentucky shall govern. No choice of law rules in any jurisdiction will apply.
- 14** **UNITED STATES GOVERNMENT RESTRICTED RIGHTS.** The Software has been developed entirely at private expense and is provided with RESTRICTED RIGHTS. Use, duplication and disclosure by the Government is subject to restrictions as set forth in subparagraph (c) (1) (ii) of the Rights in Technical Data and Computer Software clause at DFARS 252.227-7013 and in similar FAR provisions (or any equivalent agency regulation or contract clause).
- 15** **CONSENT TO USE OF DATA.** You agree that Lexmark, its affiliates, and agents may collect and use information you provide in relation to support services performed with respect to the Software Program and requested by you. Lexmark agrees not to use this information in a form that personally identifies you except to the extent necessary to provide such services.
- 16** **EXPORT RESTRICTIONS.** You may not (a) acquire, ship, transfer, or reexport, directly or indirectly, the Software Program or any direct product therefrom, in violation of any applicable export laws or (b) permit the Software Program to be used for any purpose prohibited by such export laws, including, without limitation, nuclear, chemical, or biological weapons proliferation.
- 17** **CAPACITY AND AUTHORITY TO CONTRACT.** You represent that you are of the legal age of majority in the place you sign this License Agreement and, if applicable, you are duly authorized by your employer or principal to enter into this contract.
- 18** **ENTIRE AGREEMENT.** This License Agreement (including any addendum or amendment to this License Agreement that is included with the Software Program) is the entire agreement between you and Lexmark relating to the Software Program. Except as otherwise provided for herein, these terms and conditions supersede all prior or contemporaneous oral or written communications, proposals, and representations with respect to the Software Program or any other subject matter covered by this License Agreement (except to the extent such extraneous terms do not conflict with the terms of this License Agreement, any other written agreement signed by you and Lexmark relating to your Use of the Software Program). To the extent any Lexmark policies or programs for support services conflict with the terms of this License Agreement, the terms of this License Agreement shall control.

Open LDAP 2.4.24

THIS SOFTWARE IS PROVIDED BY THE OPENLDAP FOUNDATION AND ITS CONTRIBUTORS "AS IS" AND ANY EXPRESSED OR IMPLIED WARRANTIES, INCLUDING, BUT NOT LIMITED TO, THE IMPLIED WARRANTIES OF MERCHANTABILITY AND FITNESS FOR A PARTICULAR PURPOSE ARE DISCLAIMED. IN NO EVENT SHALL THE OPENLDAP FOUNDATION, ITS CONTRIBUTORS, OR THE AUTHOR(S) OR OWNER(S) OF THE SOFTWARE BE LIABLE FOR ANY DIRECT, INDIRECT, INCIDENTAL, SPECIAL, EXEMPLARY, OR CONSEQUENTIAL DAMAGES (INCLUDING, BUT NOT LIMITED TO, PROCUREMENT OF SUBSTITUTE GOODS OR SERVICES; LOSS OF USE, DATA, OR PROFITS; OR BUSINESS INTERRUPTION) HOWEVER CAUSED AND ON ANY THEORY OF LIABILITY, WHETHER IN CONTRACT, STRICT LIABILITY, OR TORT (INCLUDING NEGLIGENCE OR OTHERWISE) ARISING IN ANY WAY OUT OF THE USE OF THIS SOFTWARE, EVEN IF ADVISED OF THE POSSIBILITY OF SUCH DAMAGE.

OpenLDAP is a registered trademark of the OpenLDAP Foundation.

Copyright 1999-2003 The OpenLDAP Foundation, Redwood City, California, USA. All Rights Reserved. Permission to copy and distribute verbatim copies of this document is granted.

Portions Copyright 1998-2008 Kurt D. Zeilenga.

Portions Copyright 1998-2006 Net Boolean Incorporated.

Portions Copyright 2001-2006 IBM Corporation.

All rights reserved.

Redistribution and use in source and binary forms, with or without modification, are permitted only as authorized by the OpenLDAP Public License.

Portions Copyright 1999-2008 Howard Y.H. Chu.

Portions Copyright 1999-2008 Symas Corporation.

Portions Copyright 1998-2003 Hallvard B. Furuseth.

Portions Copyright 2008-2009 Gavin Henry.

Portions Copyright 2008-2009 Suretec Systems Ltd.

All rights reserved.

Redistribution and use in source and binary forms, with or without modification, are permitted provided that this notice is preserved. The names of the copyright holders may not be used to endorse or promote products derived from this software without their specific prior written permission. This software is provided ``as is" without express or implied warranty.

Portions Copyright (c) 1992-1996 Regents of the University of Michigan.

All rights reserved.

Redistribution and use in source and binary forms are permitted provided that this notice is preserved and that due credit is given to the University of Michigan at Ann Arbor. The name of the University may not be used to endorse or promote products derived from this software without specific prior written permission. This software is provided ``as is" without express or implied warranty.

END OF OPENLDAP NOTICES AND INFORMATION

Apache License Version 2.0, January 2004

<http://www.apache.org/licenses/>

TERMS AND CONDITIONS FOR USE, REPRODUCTION, AND DISTRIBUTION

1 Definitions.

"License" shall mean the terms and conditions for use, reproduction, and distribution as defined by Sections 1 through 9 of this document.

"Licensor" shall mean the copyright owner or entity authorized by the copyright owner that is granting the License.

"Legal Entity" shall mean the union of the acting entity and all other entities that control, are controlled by, or are under common control with that entity. For the purposes of this definition, "control" means (i) the power, direct or indirect, to cause the direction or management of such entity, whether by contract or otherwise, or (ii) ownership of fifty percent (50%) or more of the outstanding shares, or (iii) beneficial ownership of such entity.

"You" (or "Your") shall mean an individual or Legal Entity exercising permissions granted by this License.

"Source" form shall mean the preferred form for making modifications, including but not limited to software source code, documentation source, and configuration files.

"Object" form shall mean any form resulting from mechanical transformation or translation of a Source form, including but not limited to compiled object code, generated documentation, and conversions to other media types.

"Work" shall mean the work of authorship, whether in Source or Object form, made available under the License, as indicated by a copyright notice that is included in or attached to the work (an example is provided in the Appendix below).

"Derivative Works" shall mean any work, whether in Source or Object form, that is based on (or derived from) the Work and for which the editorial revisions, annotations, elaborations, or other modifications represent, as a whole, an original work of authorship. For the purposes of this License, Derivative Works shall not include works that remain separable from, or merely link (or bind by name) to the interfaces of, the Work and Derivative Works thereof.

"Contribution" shall mean any work of authorship, including the original version of the Work and any modifications or additions to that Work or Derivative Works thereof, that is intentionally submitted to Licensor for inclusion in the Work by the copyright owner or by an individual or Legal Entity authorized to submit on behalf of the copyright owner. For the purposes of this definition, "submitted" means any form of electronic, verbal, or written communication sent to the Licensor or its representatives, including but not limited to communication on electronic mailing lists, source code control systems, and issue tracking systems that are managed by, or on behalf of, the Licensor for the purpose of discussing and improving the Work, but excluding communication that is conspicuously marked or otherwise designated in writing by the copyright owner as "Not a Contribution."

"Contributor" shall mean Licensor and any individual or Legal Entity on behalf of whom a Contribution has been received by Licensor and subsequently incorporated within the Work.

- 2** Grant of Copyright License. Subject to the terms and conditions of this License, each Contributor hereby grants to You a perpetual, worldwide, non-exclusive, no-charge, royalty-free, irrevocable copyright license to reproduce, prepare Derivative Works of, publicly display, publicly perform, sublicense, and distribute the Work and such Derivative Works in Source or Object form.
- 3** Grant of Patent License. Subject to the terms and conditions of this License, each Contributor hereby grants to You a perpetual, worldwide, non-exclusive, no-charge, royalty-free, irrevocable (except as stated in this section) patent license to make, have made, use, offer to sell, sell, import, and otherwise transfer the Work, where such license applies only to those patent claims licensable by such Contributor that are necessarily infringed by their Contribution(s) alone or by combination of their Contribution(s) with the Work to which such Contribution(s) was submitted. If You institute patent litigation against any entity (including a cross-claim or counterclaim in a lawsuit) alleging that the Work or a Contribution incorporated within the Work constitutes direct or contributory patent infringement, then any patent licenses granted to You under this License for that Work shall terminate as of the date such litigation is filed.
- 4** Redistribution. You may reproduce and distribute copies of the Work or Derivative Works thereof in any medium, with or without modifications, and in Source or Object form, provided that You meet the following conditions:
 - a** (a) You must give any other recipients of the Work or Derivative Works a copy of this License; and
 - b** (b) You must cause any modified files to carry prominent notices stating that You changed the files; and
 - c** (c) You must retain, in the Source form of any Derivative Works that You distribute, all copyright, patent, trademark, and attribution notices from the Source form of the Work, excluding those notices that do not pertain to any part of the Derivative Works; and
 - d** (d) If the Work includes a "NOTICE" text file as part of its distribution, then any Derivative Works that You distribute must include a readable copy of the attribution notices contained within such NOTICE file, excluding those notices that do not pertain to any part of the Derivative Works, in at least one of the following places: within a NOTICE text file distributed as part of the Derivative Works; within the Source form or documentation, if provided along with the Derivative Works; or, within a display generated by the Derivative Works, if and wherever such third-party notices normally appear. The contents of the NOTICE file are for informational purposes only and do not modify the License. You may add Your own attribution notices within Derivative Works that You distribute, alongside or as an addendum to the NOTICE text from the Work, provided that such additional attribution notices cannot be construed as modifying the License.

You may add Your own copyright statement to Your modifications and may provide additional or different license terms and conditions for use, reproduction, or distribution of Your modifications, or for any such Derivative Works as a whole, provided Your use, reproduction, and distribution of the Work otherwise complies with the conditions stated in this License.

- 5** Submission of Contributions. Unless You explicitly state otherwise, any Contribution intentionally submitted for inclusion in the Work by You to the Licensor shall be under the terms and conditions of this License, without any

additional terms or conditions. Notwithstanding the above, nothing herein shall supersede or modify the terms of any separate license agreement you may have executed with Licensor regarding such Contributions.

- 6 Trademarks. This License does not grant permission to use the trade names, trademarks, service marks, or product names of the Licensor, except as required for reasonable and customary use in describing the origin of the Work and reproducing the content of the NOTICE file.
- 7 Disclaimer of Warranty. Unless required by applicable law or agreed to in writing, Licensor provides the Work (and each Contributor provides its Contributions) on an "AS IS" BASIS, WITHOUT WARRANTIES OR CONDITIONS OF ANY KIND, either express or implied, including, without limitation, any warranties or conditions of TITLE, NON-INFRINGEMENT, MERCHANTABILITY, or FITNESS FOR A PARTICULAR PURPOSE. You are solely responsible for determining the appropriateness of using or redistributing the Work and assume any risks associated with Your exercise of permissions under this License.
- 8 Limitation of Liability. In no event and under no legal theory, whether in tort (including negligence), contract, or otherwise, unless required by applicable law (such as deliberate and grossly negligent acts) or agreed to in writing, shall any Contributor be liable to You for damages, including any direct, indirect, special, incidental, or consequential damages of any character arising as a result of this License or out of the use or inability to use the Work (including but not limited to damages for loss of goodwill, work stoppage, computer failure or malfunction, or any and all other commercial damages or losses), even if such Contributor has been advised of the possibility of such damages.
- 9 Accepting Warranty or Additional Liability. While redistributing the Work or Derivative Works thereof, You may choose to offer, and charge a fee for, acceptance of support, warranty, indemnity, or other liability obligations and/or rights consistent with this License. However, in accepting such obligations, You may act only on Your own behalf and on Your sole responsibility, not on behalf of any other Contributor, and only if You agree to indemnify, defend, and hold each Contributor harmless for any liability incurred by, or claims asserted against, such Contributor by reason of your accepting any such warranty or additional liability.

END OF TERMS AND CONDITIONS

APPENDIX: How to apply the Apache License to your work.

To apply the Apache License to your work, attach the following boilerplate notice, with the fields enclosed by brackets "[]" replaced with your own identifying information. (Don't include the brackets!) The text should be enclosed in the appropriate comment syntax for the file format. We also recommend that a file or class name and description of purpose be included on the same "printed page" as the copyright notice for easier identification within third-party archives.

Copyright [yyyy] [name of copyright owner]

Licensed under the Apache License, Version 2.0 (the "License"); you may not use this file except in compliance with the License. You may obtain a copy of the License at

<http://www.apache.org/licenses/LICENSE-2.0>

Unless required by applicable law or agreed to in writing, software distributed under the License is distributed on an "AS IS" BASIS, WITHOUT WARRANTIES OR CONDITIONS OF ANY KIND, either express or implied. See the License for the specific language governing permissions and limitations under the License.

The MIT License

Copyright (c) 2008 John Resig, <http://jquery.com/>

Permission is hereby granted, free of charge, to any person obtaining a copy of this software and associated documentation files (the "Software"), to deal in the Software without restriction, including without limitation the rights to use, copy, modify, merge, publish, distribute, sublicense, and/or sell copies of the Software, and to permit persons to whom the Software is furnished to do so, subject to the following conditions:

The above copyright notice and this permission notice shall be included in all copies or substantial portions of the Software.

THE SOFTWARE IS PROVIDED "AS IS", WITHOUT WARRANTY OF ANY KIND, EXPRESS OR IMPLIED, INCLUDING BUT NOT LIMITED TO THE WARRANTIES OF MERCHANTABILITY, FITNESS FOR A PARTICULAR PURPOSE AND NONINFRINGEMENT. IN NO EVENT SHALL THE AUTHORS OR COPYRIGHT HOLDERS BE LIABLE FOR ANY CLAIM, DAMAGES OR OTHER LIABILITY, WHETHER IN AN ACTION OF CONTRACT, TORT OR OTHERWISE, ARISING FROM, OUT OF OR IN CONNECTION WITH THE SOFTWARE OR THE USE OR OTHER DEALINGS IN THE SOFTWARE.

Log4net 1.2.10

This product includes software developed by The Apache Software Foundation (<http://www.apache.org/>).

The names "log4net" and "Apache Software Foundation" must not be used to endorse or promote products derived from this software without prior written permission. For written permission, please contact apache@apache.org.

END OF LOG4NET NOTICES AND INFORMATION

NullSoft Scriptable Install System (NSIS) 2.46

Copyright (C) 1995-2009 Contributors

More detailed copyright information can be found in the individual source code files.

This software is provided 'as-is', without any express or implied warranty. In no event will the authors be held liable for any damages arising from the use of this software. Permission is granted to anyone to use this software for any purpose, including commercial applications, and to alter it and redistribute it freely, subject to the following restrictions:

1. The origin of this software must not be misrepresented; you must not claim that you wrote the original software. If you use this software in a product, an acknowledgment in the product documentation would be appreciated but is not required.
2. Altered source versions must be plainly marked as such, and must not be misrepresented as being the original software.
3. This notice may not be removed or altered from any source distribution.

APPLICABLE LICENSES

* All NSIS source code, plug-ins, documentation, examples, header files and graphics, with the exception of the compression modules and where otherwise noted, are licensed under the zlib/libpng license.

* The zlib compression module for NSIS is licensed under the zlib/libpng license.

* The bzip2 compression module for NSIS is licensed under the bzip2 license.

Copyright (C) 1996-2000 Julian R Seward. All rights reserved.

* The LZMA compression module for NSIS is licensed under the Common Public License version 1.0.

END OF NSIS NOTICES AND INFORMATION

NDesk Options 0.2.1

END OF NDESK OPTIONS NOTICES AND INFORMATION

Ajax Control Toolkit 40412

Copyright (c) 2009, CodePlex Foundation

All rights reserved.

Redistribution and use in source and binary forms, with or without modification, are permitted provided that the following conditions are met:

* Redistributions of source code must retain the above copyright notice, this list of conditions and the following disclaimer.

* Redistributions in binary form must reproduce the above copyright notice, this list of conditions and the following disclaimer in the documentation and/or other materials provided with the distribution.

* Neither the name of CodePlex Foundation nor the names of its contributors may be used to endorse or promote products derived from this software without specific prior written permission.

THIS SOFTWARE IS PROVIDED BY THE COPYRIGHT HOLDERS AND CONTRIBUTORS "AS IS" AND ANY EXPRESS OR IMPLIED WARRANTIES, INCLUDING, BUT NOT LIMITED TO, THE IMPLIED WARRANTIES OF MERCHANTABILITY AND FITNESS FOR A PARTICULAR PURPOSE ARE DISCLAIMED. IN NO EVENT SHALL THE COPYRIGHT OWNER OR CONTRIBUTORS BE LIABLE FOR ANY DIRECT, INDIRECT, INCIDENTAL, SPECIAL, EXEMPLARY, OR CONSEQUENTIAL DAMAGES (INCLUDING, BUT NOT LIMITED TO, PROCUREMENT OF SUBSTITUTE GOODS OR SERVICES; LOSS OF USE, DATA, OR PROFITS; OR BUSINESS INTERRUPTION) HOWEVER CAUSED AND ON ANY THEORY OF LIABILITY, WHETHER IN CONTRACT, STRICT LIABILITY, OR TORT (INCLUDING NEGLIGENCE OR OTHERWISE) ARISING IN ANY WAY OUT OF THE USE OF THIS SOFTWARE, EVEN IF ADVISED OF THE POSSIBILITY OF SUCH DAMAGE. END OF AJAX CONTROL TOOLKIT NOTICES AND INFORMATION

Apache Commons Net 2.2

Copyright 2001-2010 The Apache Software Foundation

This product includes software developed by The Apache Software Foundation (<http://www.apache.org/>).

END OF APACHE COMMONS NET NOTICES AND INFORMATION

Google Java Library Release 08

Copyright 2011 Google

The Apache Software Foundation

END OF GOOGLE JAVA LIBRARY NOTICES AND DOCUMENTATION

Simple Logging Façade for JAVA Version 1.6.1

Copyright (c) 2004-2008 QOS.ch All rights reserved. Permission is hereby granted, free of charge, to any person obtaining a copy of this software and associated documentation files (the "Software"), to deal in the Software without restriction, including without limitation the rights to use, copy, modify, merge, publish, distribute, sublicense, and/or sell copies of the Software, and to permit persons to whom the Software is furnished to do so, subject to the following conditions: The above copyright notice and this permission notice shall be included in all copies or substantial portions of the Software. THE SOFTWARE IS PROVIDED "AS IS", WITHOUT WARRANTY OF ANY KIND, EXPRESS OR IMPLIED, INCLUDING BUT NOT LIMITED TO THE WARRANTIES OF MERCHANTABILITY, FITNESS FOR A PARTICULAR PURPOSE AND NONINFRINGEMENT. IN NO EVENT SHALL THE AUTHORS OR COPYRIGHT HOLDERS BE LIABLE FOR ANY CLAIM, DAMAGES OR OTHER LIABILITY, WHETHER IN AN ACTION OF CONTRACT, TORT OR OTHERWISE, ARISING FROM, OUT OF OR IN CONNECTION WITH THE SOFTWARE OR THE USE OR OTHER DEALINGS IN THE SOFTWARE.

END OF SIMPLE LOGGING FAÇADE FOR JAVA NOTICES AND DOCUMENTATION

SNMP Inquisitor

Java SNMP Package, copyright 2005, Jonathan Sevy, Drexel University <jsevy@cs.drexel.edu>

Project home: http://gicl.cs.drexel.edu/people/sevy/snmp/snmp_package.html

THIS SOFTWARE IS PROVIDED BY THE AUTHOR "AS IS" AND ANY EXPRESS OR IMPLIED WARRANTIES, INCLUDING, BUT NOT LIMITED TO, THE IMPLIED WARRANTIES OF MERCHANTABILITY AND FITNESS FOR A PARTICULAR PURPOSE ARE DISCLAIMED. IN NO EVENT SHALL THE AUTHOR BE LIABLE FOR ANY DIRECT, INDIRECT, INCIDENTAL, SPECIAL, EXEMPLARY, OR CONSEQUENTIAL DAMAGES (INCLUDING, BUT NOT LIMITED TO, PROCUREMENT OF SUBSTITUTE GOODS OR SERVICES; LOSS OF USE, DATA, OR PROFITS; OR BUSINESS INTERRUPTION) HOWEVER CAUSED AND ON ANY

THEORY OF LIABILITY, WHETHER IN CONTRACT, STRICT LIABILITY, OR TORT (INCLUDING NEGLIGENCE OR OTHERWISE)
ARISING IN ANY WAY OUT OF THE USE OF THIS SOFTWARE, EVEN IF ADVISED OF THE POSSIBILITY OF SUCH DAMAGE.
END OF SNMP INQUISITOR NOTICES AND DOCUMENTATION

Index

Symbols

.NET Framework
installing on Windows 2003 10
installing on Windows Server
2008 7

A

AAMs
configuring 23
Active Directory Membership
Provider
configuring 29
adding
print release queue 34
advanced WSS 3.0 install 20
Alternate Access Mappings
configuring 23
application error has occurred 38
application unavailable 38

B

basic WSS 3.0 install 22

C

cannot install solution 39
configuring
AAMs 23
Active Directory Membership
Provider 29
Alternate Access Mappings 23
IIS after installation 23
LDAP Membership Provider 29
List Membership Provider 32
membership provider
automatically 28
SQL Server 2005 15
WSS after installation 23
creating
site collection 22
Virtual Directory 26
Web application 21

I

IIS 6.0
configuring after installation 23
installing 11

IIS 7.0
configuring after installation 23
installing 7
installation
prerequisites 5
system requirements 5
installing
.NET Framework 7
advanced WSS 3.0 20
basic WSS 3.0 22
IIS 6.0 11
IIS 7.0 7
print release queue 34
SNMP Service on Windows
2003 12
SNMP Service on Windows 2008 9
Solutions Platform 25
SQL Express 13
SQL Server 2005 13
SQL Server 2005 Service Pack 3 13
installing on Windows 2003
.NET Framework 10
Internet Explorer Enhanced Security
Configuration
disabling on Windows 2003 10
disabling on Windows 2008 7

J

jobs do not appear in the print
release queue 39
jobs do not print 41

L

LDAP Membership Provider
configuring 29
Lexmark e-Task Solutions
system requirements 5
license
adding 25
List Membership Provider
configuring 32
logging level
changing 35

M

membership provider
Active Directory 29

configuring automatically 28
enabling for site collection 33
LDAP 29
List 32
minimum system requirements 5

N

Network Load Balancer
adding to Web servers 17
prerequisites 17
setting up 17, 18
NLB
adding to Web servers 17
before setting up 17
setting up 18

P

prerequisites
installation 5
print release queue
adding 34

Q

queue
adding 34

R

recommended system
requirements 5

S

SharePoint-80
creating 21
site collection
creating 22
enabling membership provider 33
SNMP Service
installing on Windows 2003 12
installing on Windows 2008 9
Solutions Platform
installing 25
upgrading 26
SQL Express
installing 13
SQL Server 2005
configuring after install 15
installing 13

SQL Server 2005 Service Pack 3

- installing 13
- system requirements 5

T**TPA**

- increasing log size 28
- TPA log size
 - increasing 28
- troubleshooting
 - application error has occurred 38
 - application unavailable 38
 - cannot install solution 39
 - jobs do not appear in the print release queue 39
 - jobs do not print 41

U

- upgrading 26

V

- Virtual Directory
 - creating 26

W

- Web application
 - creating 21
- Web server
 - adding NLB 17
- WebConfigHelper
 - configuring membership provider 28
- Windows Server 2003
 - .NET Framework 10
 - installing IIS 6.0 11
 - installing SNMP Service 12
- Windows Server 2008
 - .NET Framework 7
 - installing IIS 7.0 7
 - installing SNMP Service 9
- WSS 3.0
 - advanced install 20
 - basic install 22
 - configuring after installation 23