



Disassembly of Waste Electrical and Electronic Equipment (WEEE) Manual

EU Waste Electronic and Electrical Equipment Directive require producers to provide information of the different electronic and electrical materials and components found in their products at its end-of-life, and disassembly references to treatment and recycling facilities.

The disassembly information for this product has been prepared for use by a recognized treatment or recycling facility and is not intended to be used by others.

1. Product information
- 2.
3. Materials and components list for selective **treatment**
4. Disassembly tools
5. Disassembly references

The following information is intended only for the use of treatment and recycling facilities.

All disassembly instructions should be performed with the power switch in the OFF position. Disconnect the power cord from the wall outlet and from the printer before continuing. If there are any other devices attached to the printer, then turn them off as well, and unplug any cables going into the printer.

1. Product information

Model name(s)—Indicate all model name(s) within the product family

Model name
Lexmark CS310 series – Lexmark CS310n, Lexmark CS310dn
Lexmark CS410 series – Lexmark CS410n, Lexmark CS410dn, Lexmark CS410dtn
Lexmark CS510 series – Lexmark CS510de, Lexmark CS510dte

2. Materials and components list for selective treatment

Items	Quantity	Notes
Polychlorinated biphenyls (PCB) containing capacitors	0	N/A
Mercury containing components, such as switches or backlighting lamps	0	N/A
Batteries	1	Lithium Manganese Dioxide coin cell located on the system controller card

Printed circuit boards greater than 10 cm ²	9	For Lexmark CS410dtn, Lexmark CS510dte (locations illustrated in 4.2) – 8 for Lexmark CS310n, Lexmark CS310dn, Lexmark CS410n, Lexmark CS410dn
Toner cartridges, liquid and pasty, as well as colour toner	4 Toner cartridge; 1 Waste toner bottle	Toner cartridges located inside right side top cover Waste toner bottle located inside the right side cover
Plastic containing brominated flame retardants	1 Fan; 14 Sensors; 6 Fuser parts	Fan(s) and Sensors (locations illustrated in 4.2) Plastic parts located in the fuser assembly marked with recycle code that includes "FR17" or "FR16"
Asbestos waste and components which contain asbestos	0	N/A
Cathode ray tubes	0	N/A
Chlorofluorocarbons (CFC), Hydrochlorofluorocarbons (HCFC) or Hydrofluorocarbons (HFC), Hydrocarbons (HC)	0	N/A
Gas discharge lamps	0	N/A
Liquid Crystal Display (LCD) greater than 100 cm ² and those back-lighted with Gas discharge lamps	0	
External electrical cables	1	Power cord located on the back lower left quadrant
Components containing refractory fibres	0	N/A
Components containing radioactive substances	0	N/A
Electrolyte capacitors containing substances of concern ¹	2	Capacitor(s) located on Power Supply (locations illustrated in 4.2)
¹ With (height > 25 mm, diameter > 25 mm or proportionately similar volume)		

3. Disassembly tools

Item
#2 Phillips screwdriver, magnetic
Wire cutter
E-clip puller or small flat-head screwdriver
Standard slotted head screwdriver

4. Disassembly references

4.1. Removal procedures



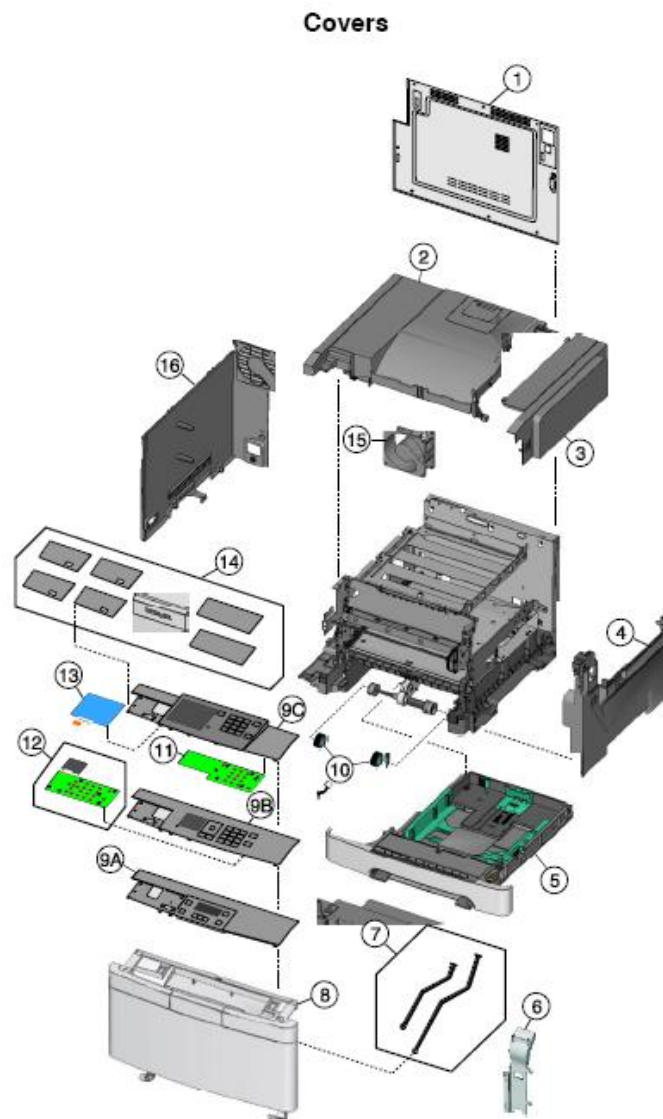
CSx10 WEEE removal

WEEE materials and components removal procedures are available upon request.

Contact: recycling@lexmark.com

4.2. Graphical illustration of material's and component's location

CS310, CS410, CS510 Series Location

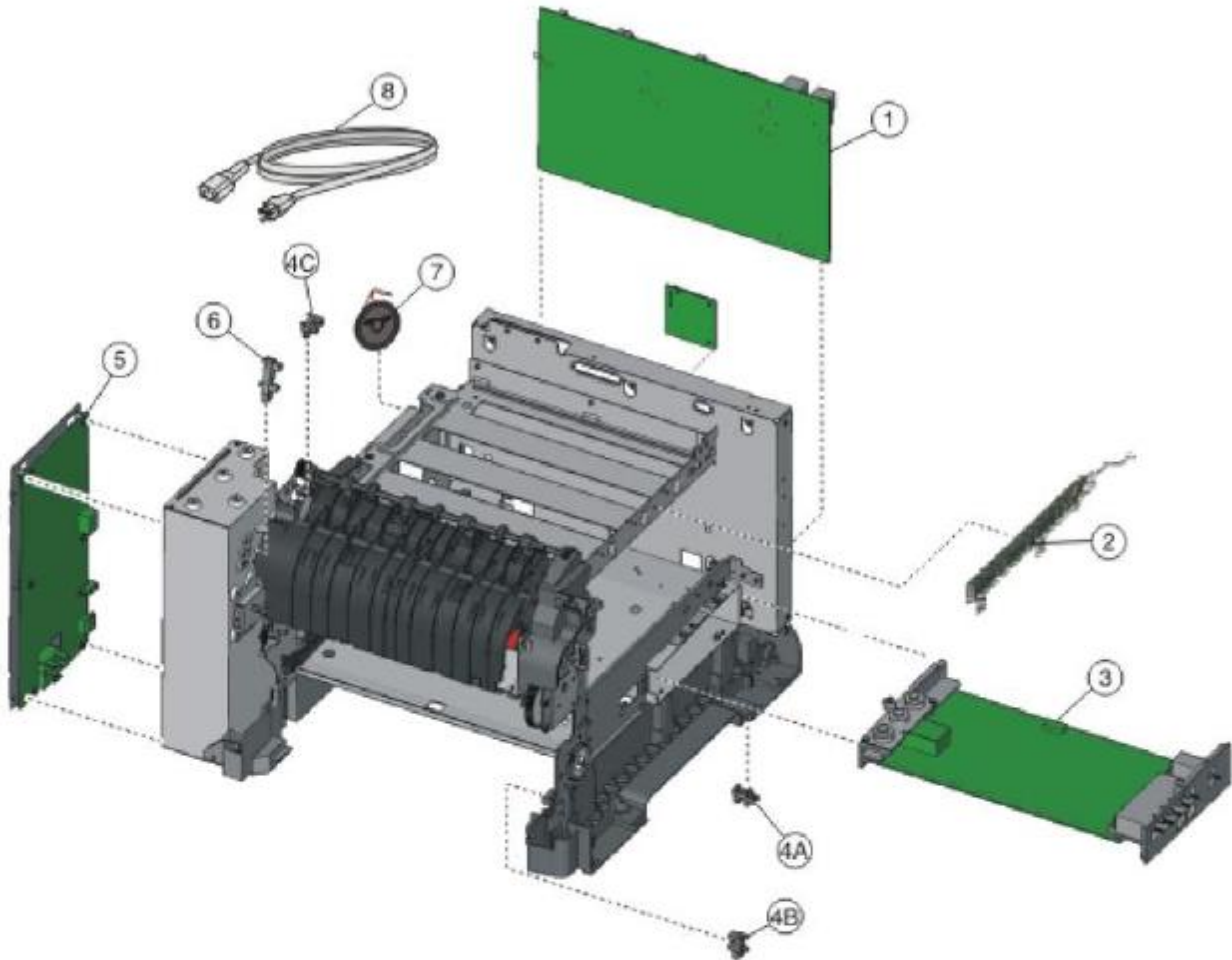


**CS310, CS410, CS510 Series
Location**

Index	Description
1	Controller board cover, CS310 / CS410
1	Controller board cover, CS510
2	Top cover assembly
3	Toner supply door
4	Right cover assembly
5	250 sheet tray assembly
6	Duplex reference edge
7	Front cover straps
8	Front cover assembly
9A	Operator panel and display assembly, CS310
9B	Operator panel, CS410
9C	Operator panel, CS510
10	Pick tires
11	UICC card, CS510
12	2.4" Display and UICC card, CS410
13	4.3" Display
14	Operator panel bezel and name plates, including: <ul style="list-style-type: none"> • Bezel (1) • Name plates (4) • Logo plate (1) • CS310 cover (1) • CS310 cover (1) • CS510 USB cover (1) • CS510 USB cover (1)
15	System fan
16	Left cover assembly

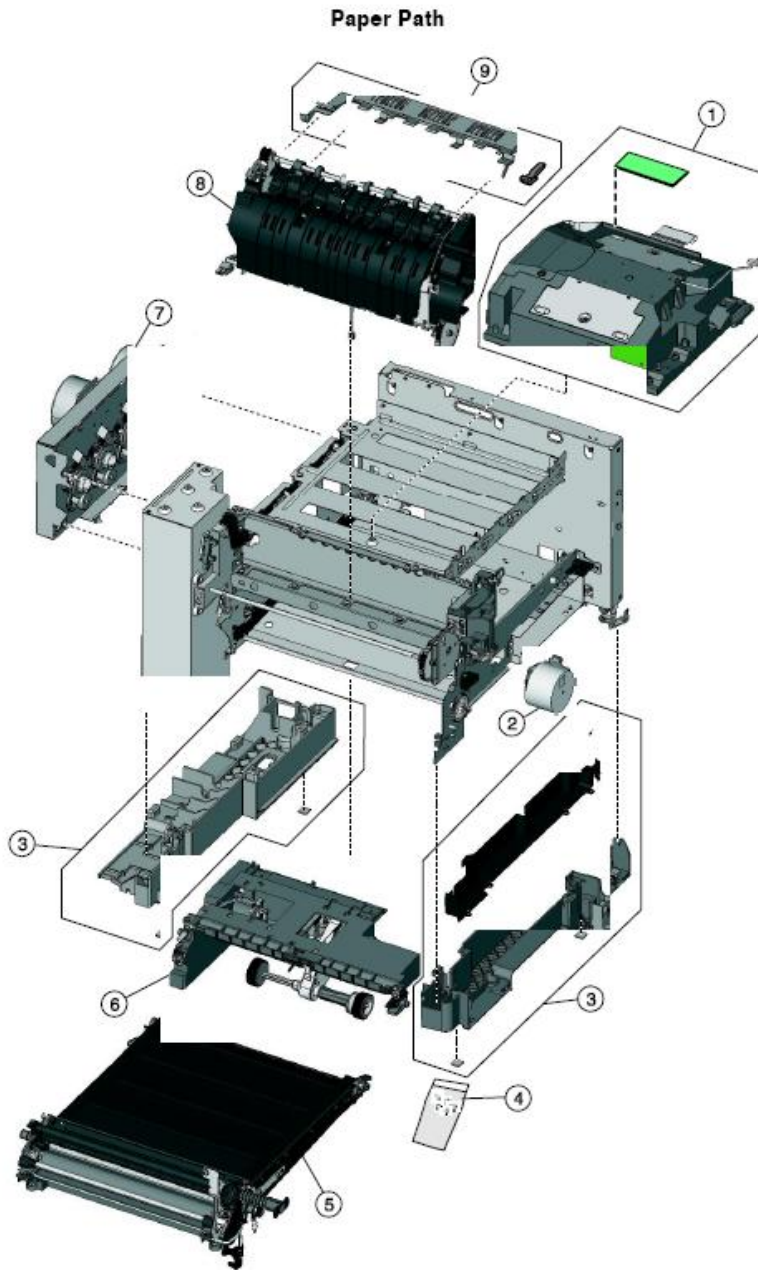
CS310, CS410, CS510 Series Location

Electronics



Index	Description
1	Controller board
2	Toner meter cycle card assembly
3	High-voltage power supply
4	Photo sensor and retainer (one per package), used for: <ul style="list-style-type: none"> • Tray present sensor (5A) • Duplex sensor (5B) • Bin-full/narrow media sensor (5C)
5	Low-voltage power supply (universal power supply)
6	Fuser exit sensor
7	Speaker, CS510
8	Power cord

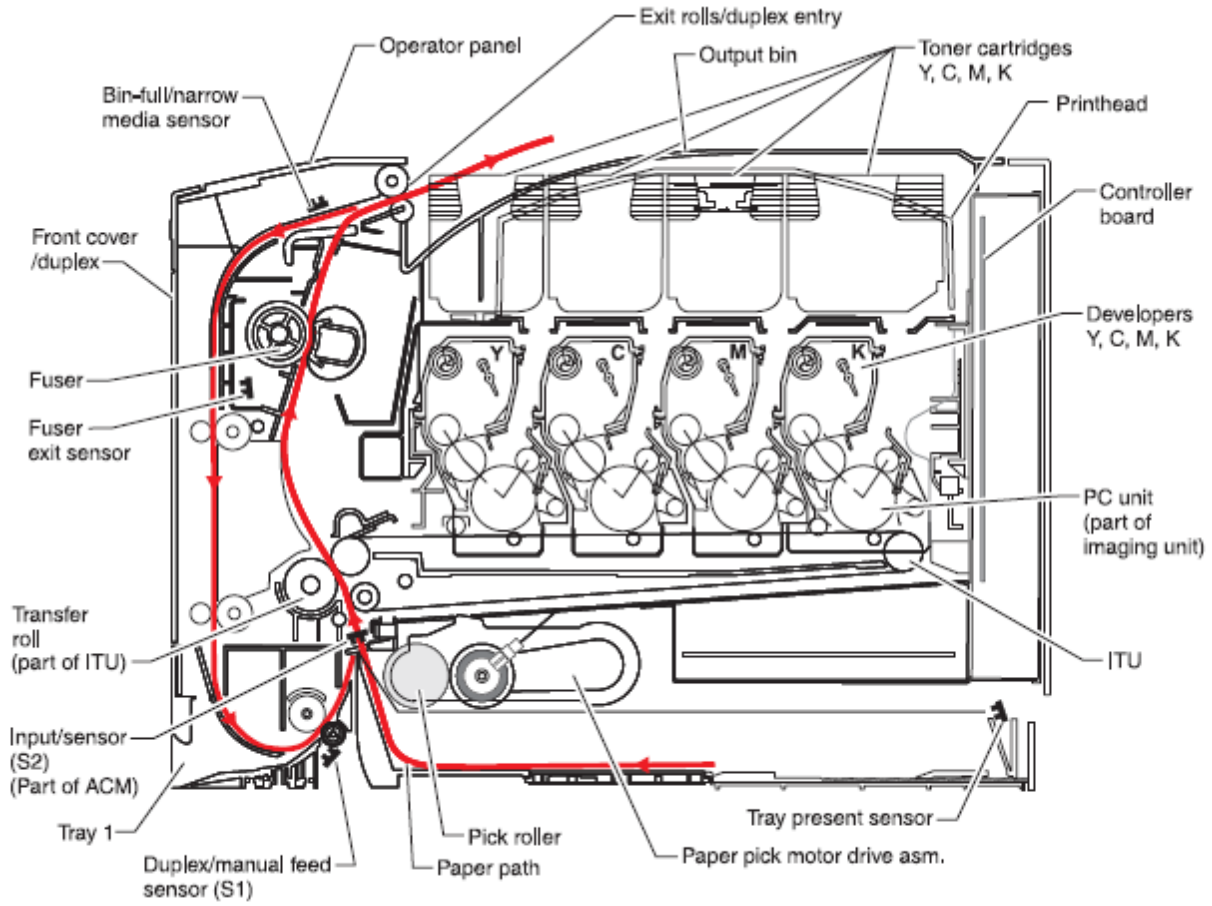
CS310, CS410, CS510 Series Location



Index	Description
1	Printhead
2	Fuser drive motor assembly
3	Lower left frame and lower right frame with cable cover
4	Miscellaneous screws
4	Screw packet

CS310, CS410, CS510 Series Location

Sensors



Picture does not show all sensors used by the product

Appendix A
Plastic containing brominated flame retardants

Part Description	Parts Marking	Location
GUIDE (MECHANICAL)-LOWER ENTRY	PET-(GF+MD)45FR(17)	FUSER AREA
GUIDE (MECHANICAL)	PET-(GF+MD)45FR(17)	FUSER AREA
GUIDE (MECHANICAL)-OUTER ENTRY	PET-(GF+MD)45FR(17)	FUSER AREA
HUB-SMART PICK	PC-(GB20+SD15) FR(16)	FUSER AREA
GUIDE (MECHANICAL)-INNER EXIT	PET-(GF+MD)45FR(17)	FUSER AREA
GUIDE (MECHANICAL)-DUPLEX	PET-(GF+MD)45FR(17)	FUSER AREA