



Disassembly of Waste Electrical and Electronic Equipment (WEEE) Manual

EU Waste Electronic and Electrical Equipment Directive require producers to provide information of the different electronic and electrical materials and components found in their products at its end-of-life, and disassembly references to treatment and recycling facilities.

This document communicates, according to the best of Lexmark's knowledge, the following information that is intended only for the use of treatment and recycling facilities:

1. Product information
2. Materials and components list for selective treatment
3. Disassembly tools
4. Disassembly references

1. Product information

Model name(s)—Indicate all model name(s) within the product family

Model name
MS910de
MX910de Series — MX910de, MX910dxe
MX911 Series — MX911de, MX911dte
MX912 Series — MX912de, MX912dxe, XM9145, XM9155, XM9165

* Add rows as needed

2. Materials and components list for selective treatment

Items	Quantity	Notes
Polychlorinated biphenyls (PCB) containing capacitors	0	N/A
Mercury containing components, such as switches or backlighting lamps	0	N/A
Batteries	1	Lithium Manganese Dioxide coin cell
Printed circuit boards greater than 10 cm ²	Multiple	17 for MX91x 13 for MS91x 1 in every Option (2x500-Sheet tray, 3000-Sheet tray, 2500-Sheet tray, SHPF, Booklet maker) 2 for Staple Finisher

Toner cartridges, liquid and pasty, as well as colour toner	5	4 Toner cartridges 1 Waste toner bottle
Plastic containing brominated flame retardants	Multiple	See Appendix A
Asbestos waste and components which contain asbestos	0	N/A
Cathode ray tubes	0	N/A
Chlorofluorocarbons (CFC), Hydrochlorofluorocarbons (HCFC) or Hydrofluorocarbons (HFC), Hydrocarbons (HC)	0	N/A
Gas discharge lamps	0	N/A
Liquid Crystal Display (LCD) greater than 100 cm ² and those back-lighted with Gas discharge lamps	1	N/A
External electrical cables	1	Power cable – Rear side of the device
Components containing refractory fibres	0	N/A
Components containing radioactive substances	0	N/A
Electrolyte capacitors containing substances of concern ¹	0	N/A

¹With (height > 25 mm, diameter > 25 mm or proportionately similar volume)

3. Disassembly tools

Item
#2 Phillips screwdriver, magnetic
Wire cutter
E-clip puller or a small flat-head screwdriver

4. Disassembly references

4.1. Removal Procedures



MS91x and MX91x Series WEEE removal

WEEE materials and components removal procedures are available upon request.

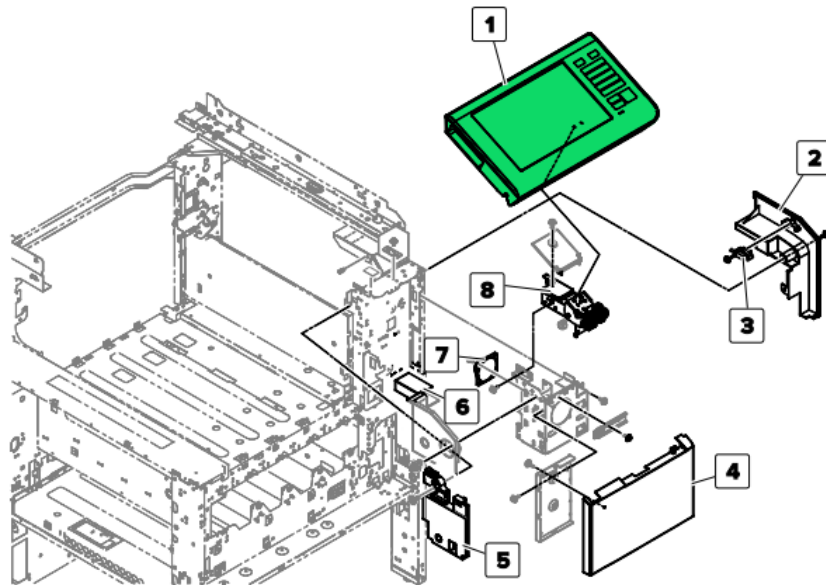
Contact: recycling@lexmark.com

4.2. Graphical illustration of material's and component's location

See next page

MS91x and MX91x SERIES Location

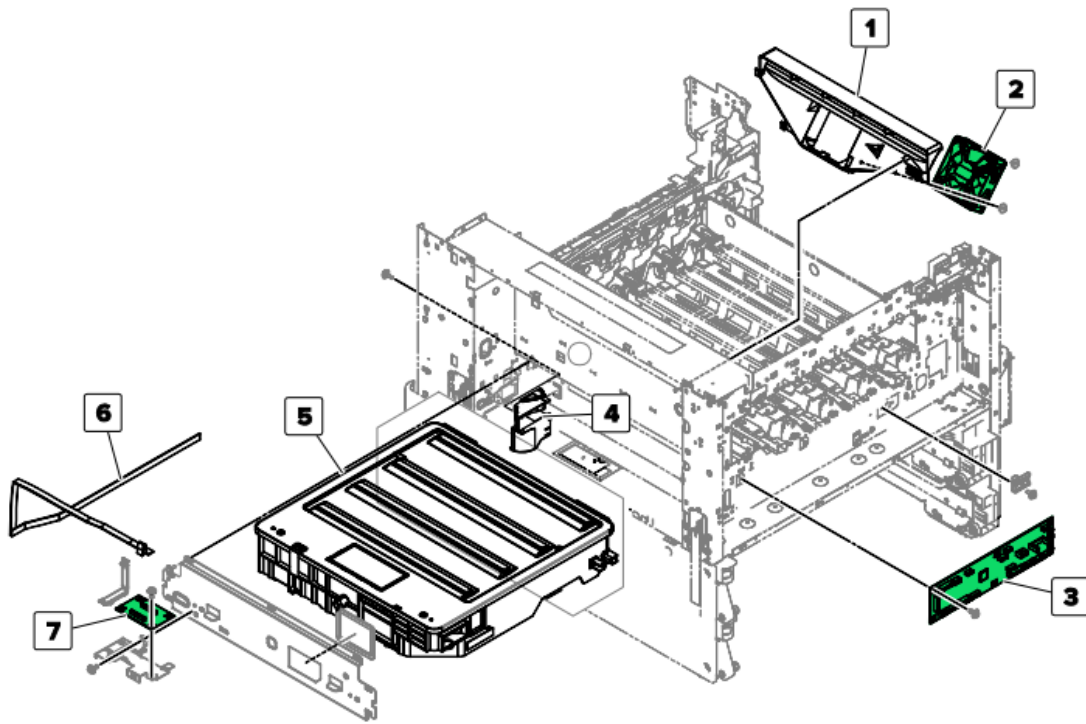
Control Panel



Index	Description
1	Control panel
2	USB port cover
3	USB extension cable
4	Speaker cover
5	Control panel cable guide lower cover
6	Control panel cable guide upper cover
7	Speaker
8	Control panel hinge

MS91x and MX91x SERIES Location

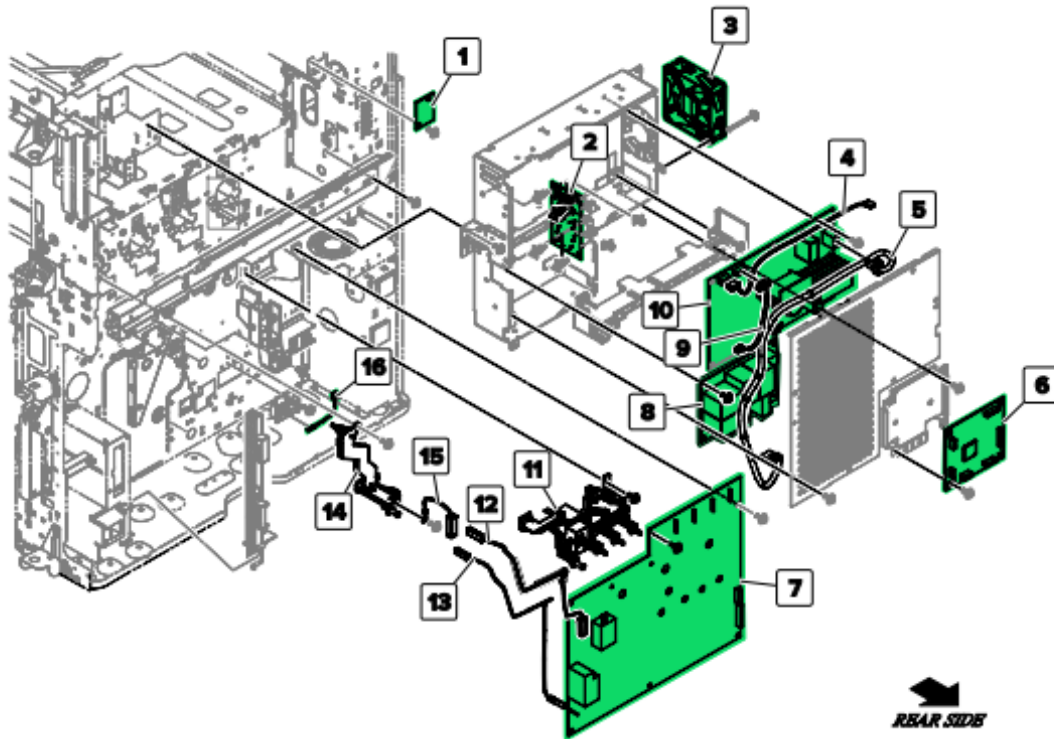
Printhead



Index	Description
1	Transfer belt fan duct
2	Transfer belt fan
3	Image controller board
4	Ozone filter duct
5	Printhead (MFP)
6	Printhead FFC
7	Printhead relay board

MS91x and MX91x SERIES Location

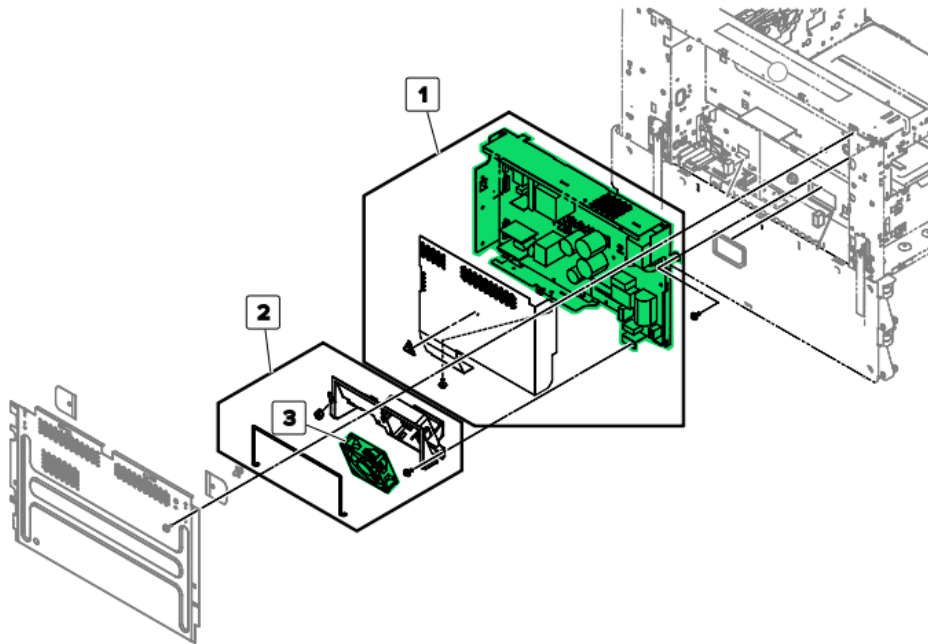
High Voltage



Index	Description
1	Power-saving board
2	Induction heater magnetic erase board
3	Fuser power supply fan
4	Induction heater power supply cable
5	Noise filter board cable
6	Expansion controller board
7	High voltage board
8	Noise filter board, 100 V
8	Noise filter board, 230 V
9	Induction heater magnetic erase board cable
10	Induction heater power supply, 100 V
10	Induction heater power supply, 230 V
11	High voltage developer contact
12	High voltage transfer cable
13	High voltage charge cable
14	High voltage charge contact
15	High voltage toner charge cable
16	Sensor (tray 1 and 2 paper temperature)

MS91x and MX91x SERIES Location

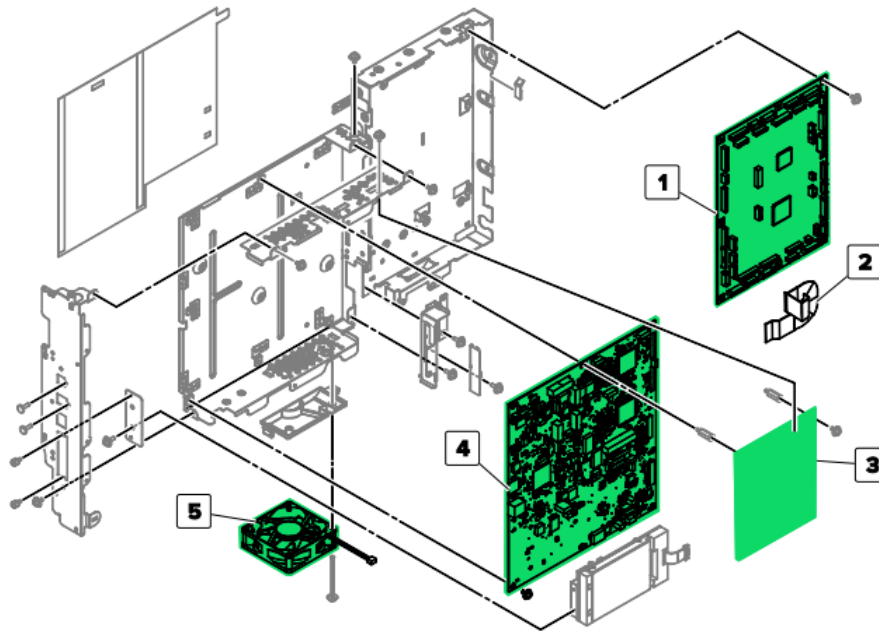
Main Power Supply



Index	Description
1	Main power supply, 100 V
1	Main power supply, 230 V
2	Main power supply fan with duct
3	Main power supply fan

MS91x and MX91x SERIES Location

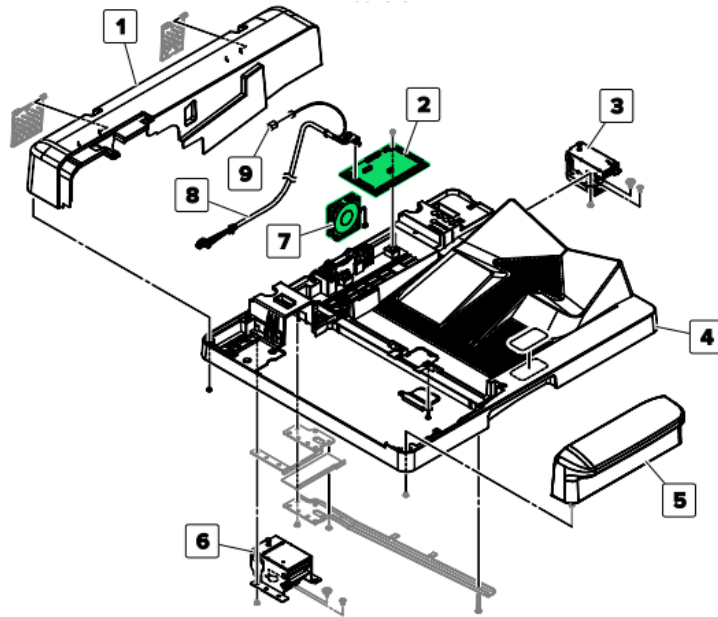
Electrical 2



Index	Description
1	Engine controller board
2	Engine controller board FFC
3	ADF/scanner image controller board
4	Controller board (MFP)
5	Controller board fan

MX91x SERIES Location

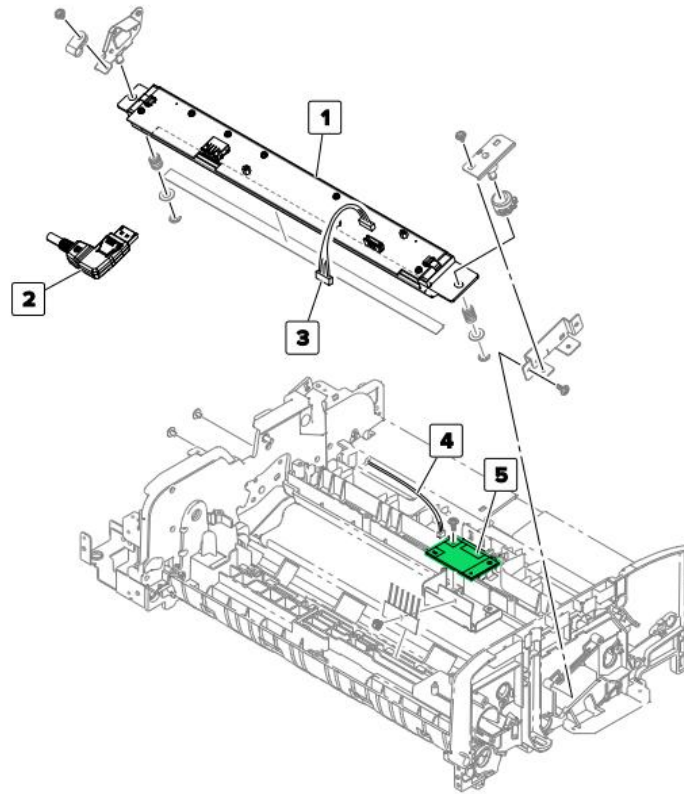
ADF Covers 1



Index	Description
1	ADF rear cover
2	ADF controller board
3	ADF Right hinge
4	ADF frame
5	ADF front Cover
6	ADF Left hinge
7	ADF fan
8	ADF CIS cable
9	ADF sensor cable

MX91x SERIES Location

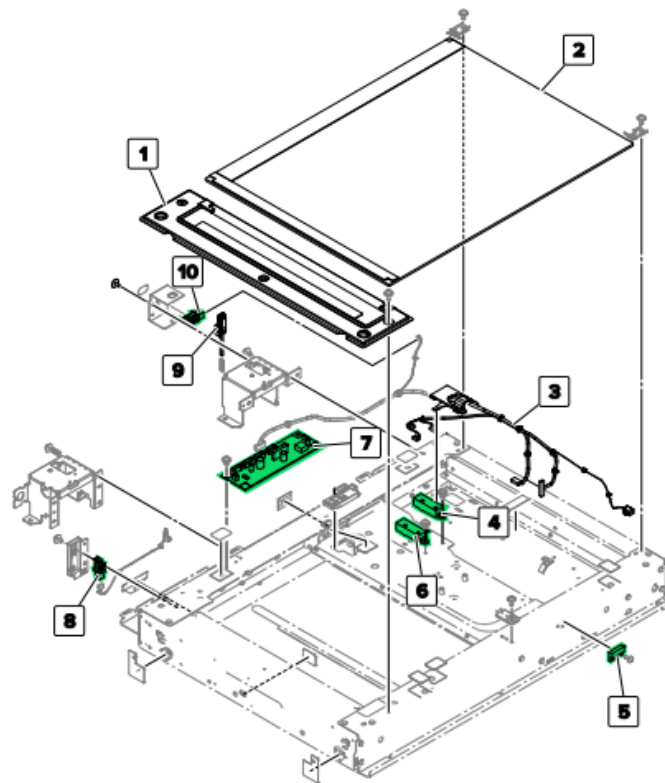
ADF CIS 1



Index	Description
1	ADF CIS assembly
2	ADF CIS data cable
3	ADF CIS power supply cable
4	ADF CIS power supply board cable
5	ADF CIS power supply board

MX91x SERIES Location

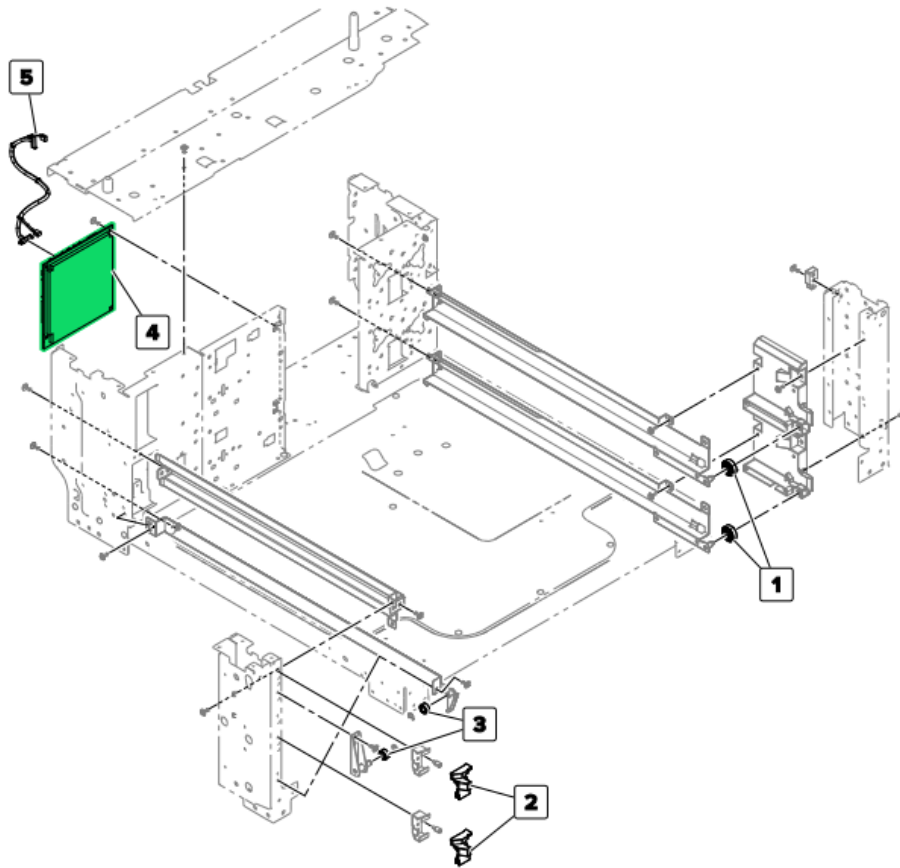
Flatbed Scanner



Index	Description
1	ADF duplex scan glass
2	Scanner glass
3	Scanner sensor cable
4	Sensor (scanner paper length 1)
5	Sensor (scanner cover switch)
6	Sensor (scanner paper length 2)
7	Scanner controller board
8	Sensor (scanner lamp home)
9	Scanner cover open sensor actuator
10	Sensor (scanner cover open)

MS91x and MX91x Options Location

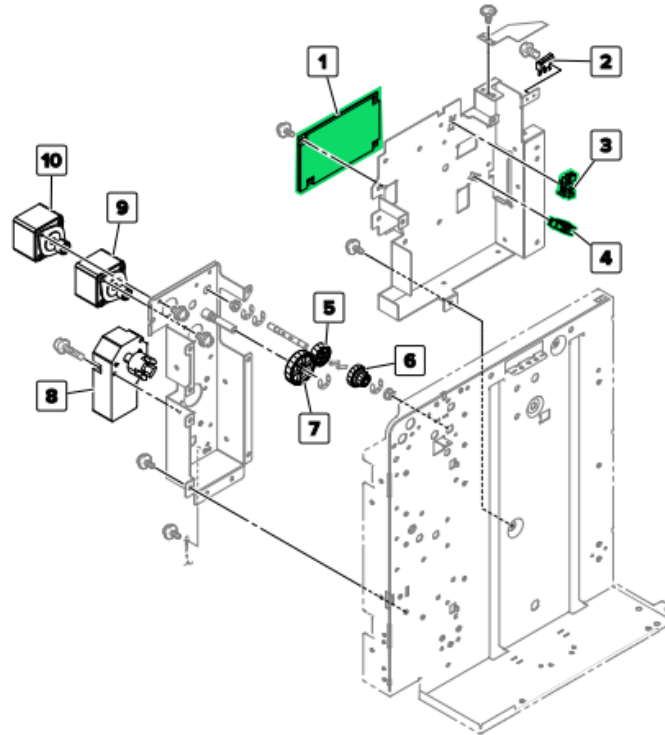
2 x 500-Sheet Tray



Index	Description
1	2 x 500-sheet tray right rail guide wheel
2	2 x 500-sheet tray insert stopper
3	2 x 500-sheet tray left rail guide wheel
4	2 x 500-sheet tray controller board
5	2 x 500-sheet tray interface cable

MS91x and MX91x Options Location

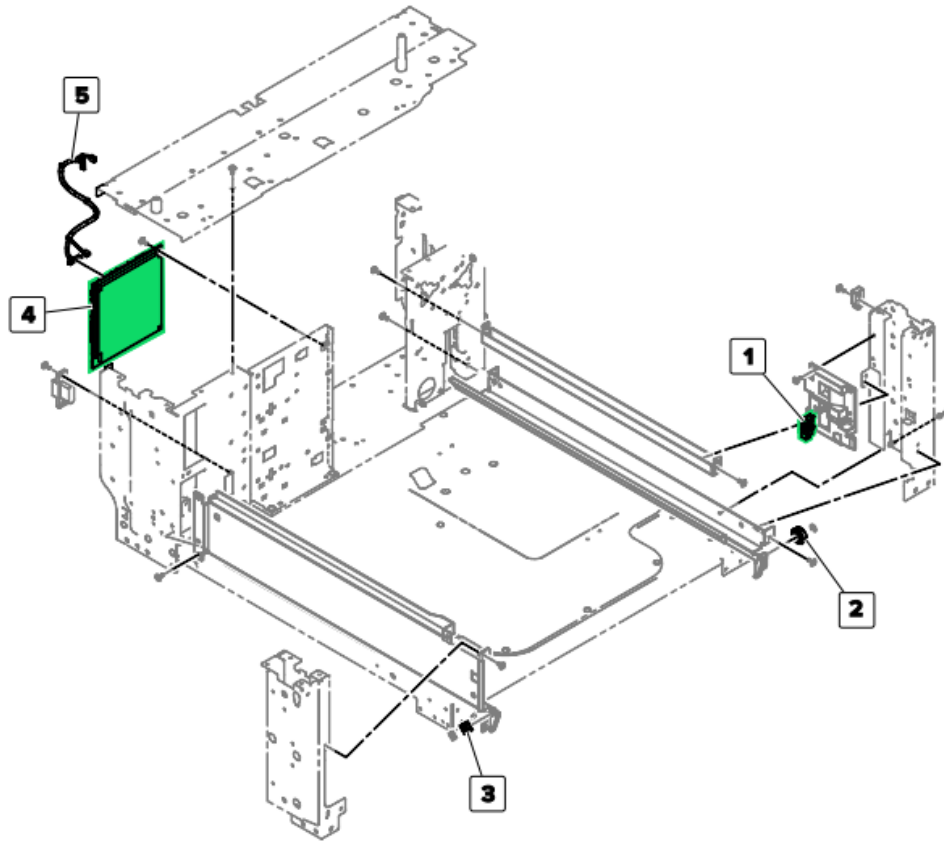
3000-Sheet Tray



Index	Description
1	3000-sheet tray controller board
2	3000-sheet tray door switch
3	Sensor (3000-sheet tray near empty 1)
4	Sensor (3000-sheet tray near empty 2)
5	3000-sheet tray feed motor idler gear
6	3000-sheet tray feed and pick idler gear
7	3000-sheet tray feed motor gear
8	Motor (3000-sheet tray elevator)
9	Motor (3000-sheet tray feed)
10	Motor (3000-sheet tray transport)

MS91x and MX91x Options Location

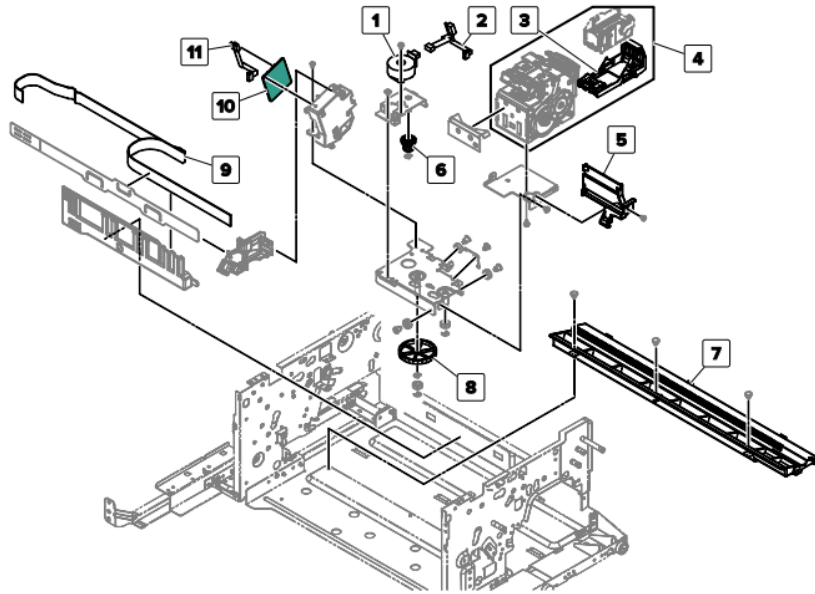
2500-Sheet Tray



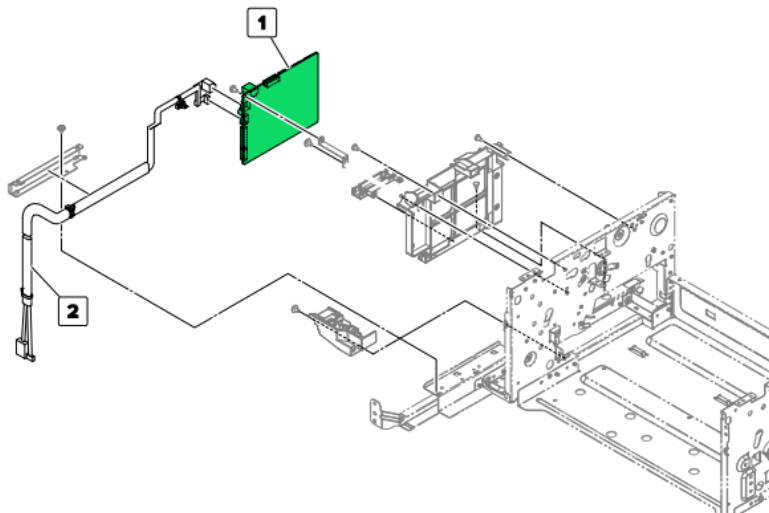
Index	Description
1	Sensor (2500-sheet tray set)
2	Tray rail guide wheel
3	Tray insert guide wheel
4	2500-sheet tray controller board
5	2500-sheet tray interface cable

MS91x and MX91x Options Location

Stapler Finisher



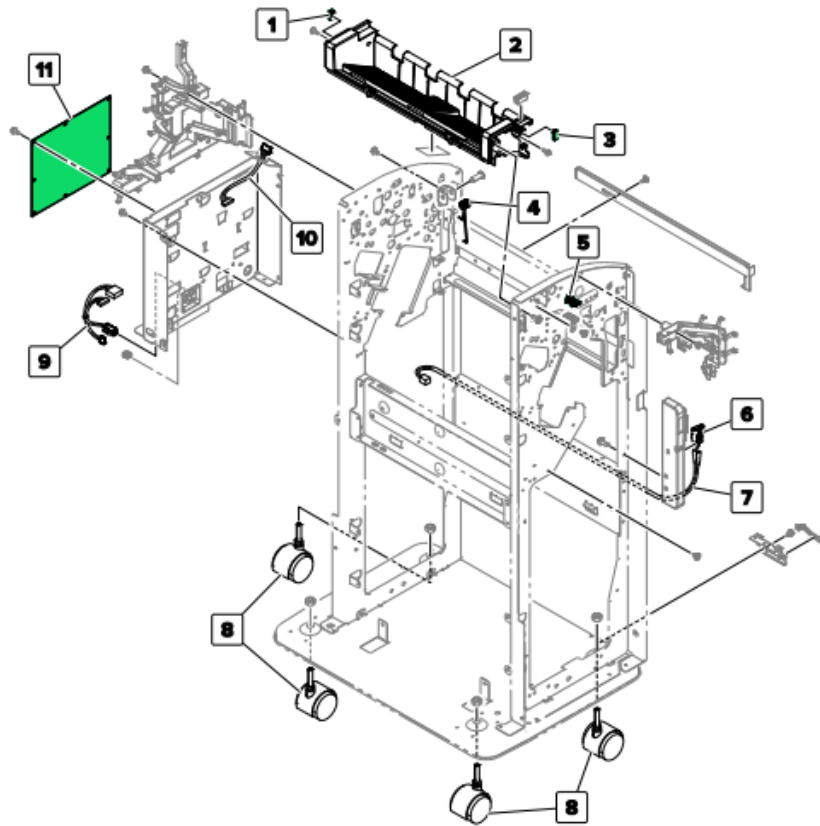
Index	Description
1	Motor (staple finisher staple unit carriage)
2	Staple finisher staple unit cable
3	Staple cartridge holder
4	Staple finisher staple unit
5	Staple finisher staple unit holder
6	Staple finisher staple unit carriage drive gear
7	Staple finisher staple unit rail
8	Staple finisher staple unit carriage gear
9	Staple finisher FFC
10	Staple finisher interface board
11	Staple finisher staple unit carriage motor cable



Index	Description
1	Staple finisher controller board
2	Staple finisher interface cable

MS91x and MX91x Options Location

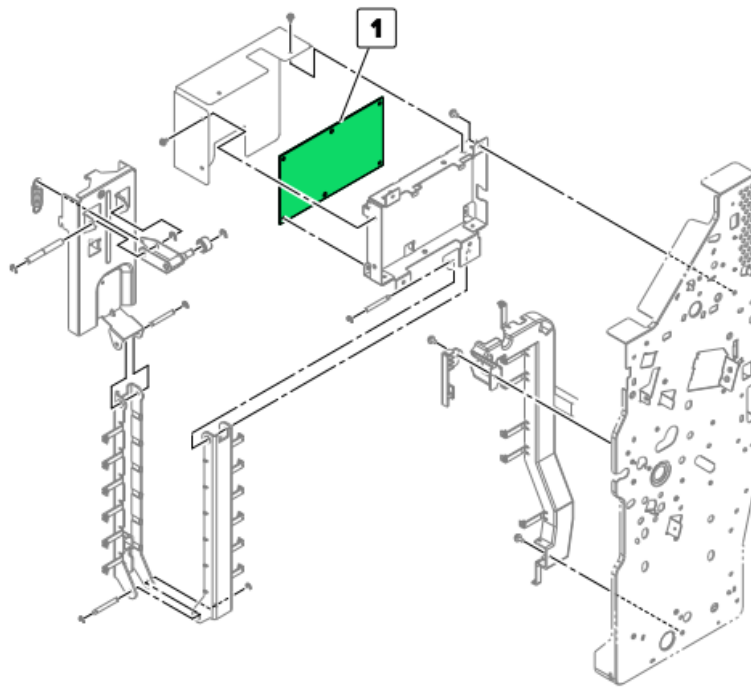
SPHT



Index	Description
1	Sensor (SHPF top bin full, transmit)
2	SHPF top bin holder
3	Sensor (SHPF top bin full, receive)
4	SHPF top jam access door spring
5	Sensor (SHPF top door)
6	SHPF front door switch
7	SHPF front door switch cable
8	SHPF caster wheel
9	Booklet maker interface extension cable
10	HPT interface extension cable
11	SHPF controller board

MS91x and MX91x Options Location

Booklet maker

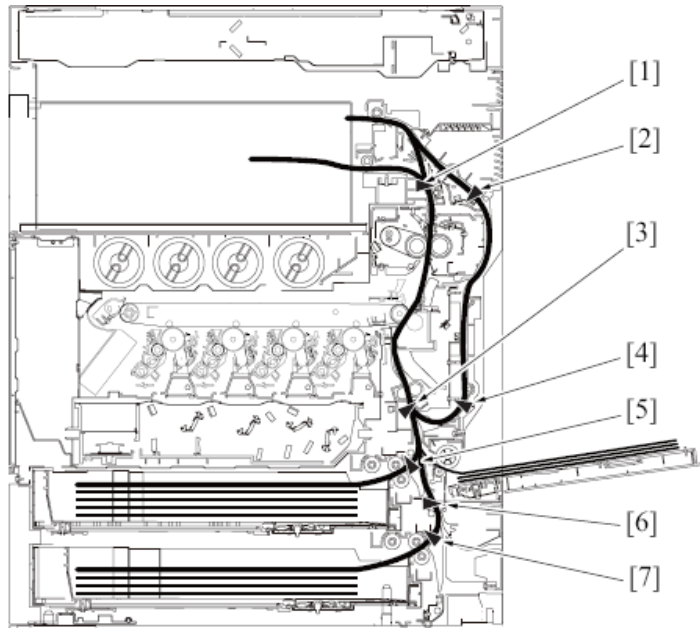


Index	Description
1	Booklet maker controller board

MS91x and MX91x SERIES Location

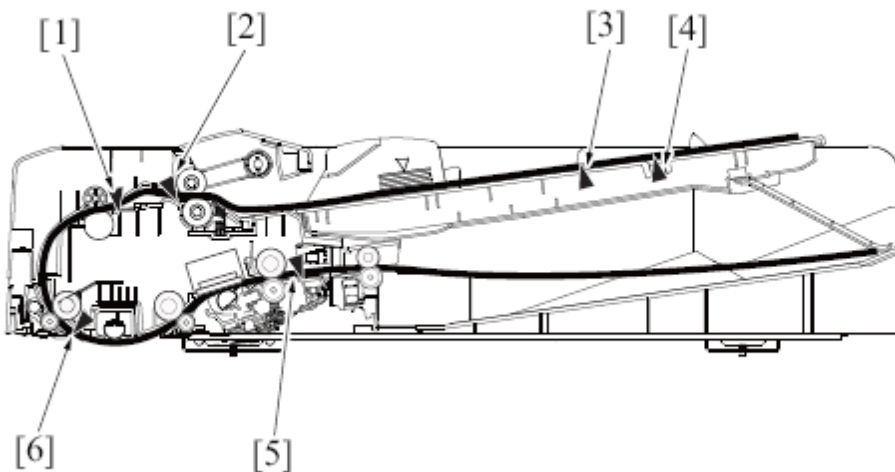
Sensors

Bizhub



[1]	Paper exit sensor (PS3)	[2]	ADU paper passage sensor/1 (PS40)
[3]	Registration sensor (PS1)	[4]	ADU paper passage sensor/2 (PS41)
[5]	Tray 1 paper feed sensor (PS23)	[6]	Tray 2 vertical transport sensor (PS19)
[7]	Tray 2 paper feed sensor (PS20)	-	-

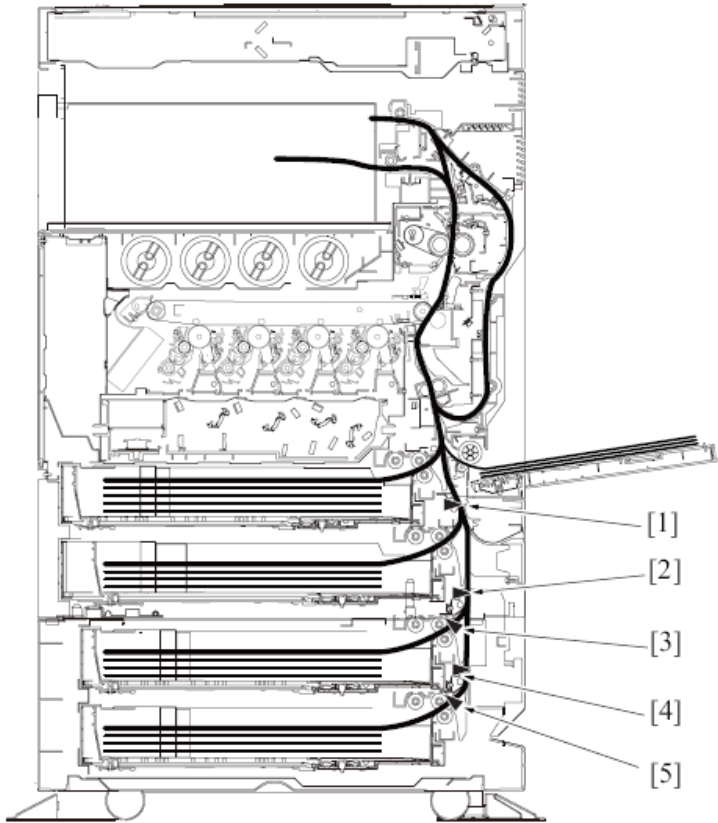
DF



**MS91x and MX91x SERIES
Location**

Sensors

PC-110/PC-210

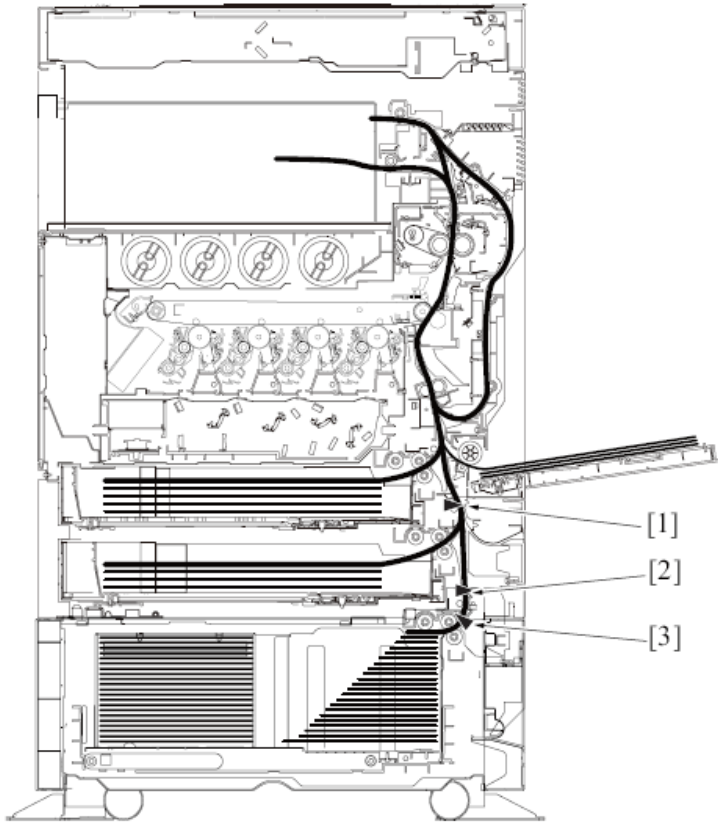


[1]	Tray 2 vertical transport sensor (PS19)	[2]	Tray 3 vertical transport sensor (PS113)
[3]	Tray 3 paper feed sensor (PS112)	[4]	Tray 4 vertical transport sensor (PS123)
[5]	Tray 4 paper feed sensor (PS122)	-	-

**MS91x and MX91x SERIES
Location**

Sensors

PC-410

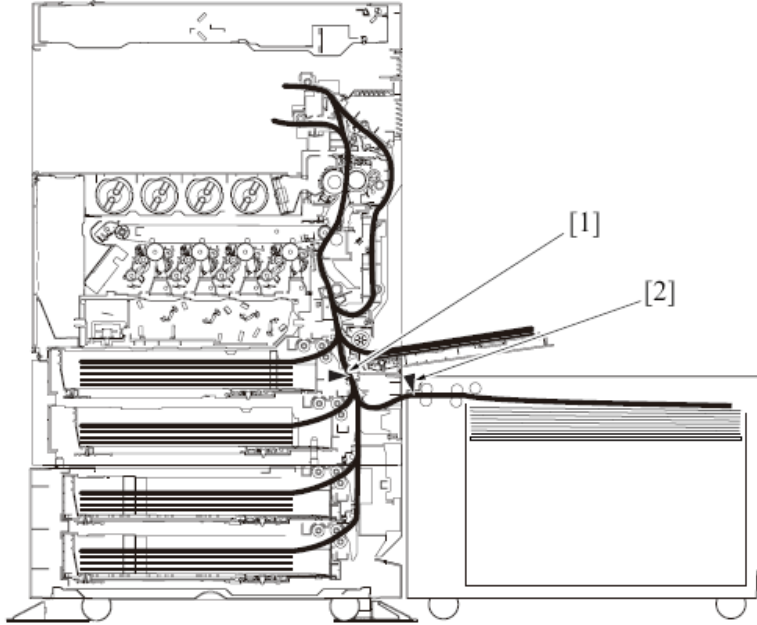


[1]	Tray 2 vertical transport sensor (PS19)	[2]	Vertical transport sensor (PS133)
[3]	Paper feed sensor (PS132)	-	-

**MS91x and MX91x SERIES
Location**

Sensors

LU-204/ LU-301

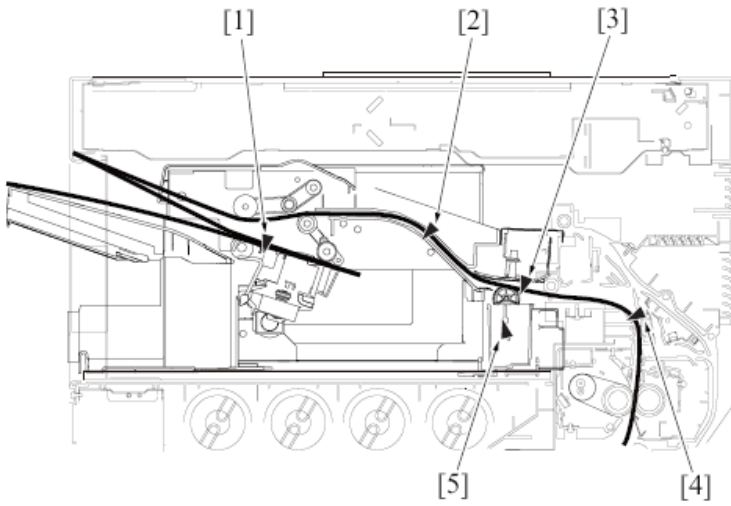


[1] Tray2 vertical transport sensor (PS12)	[2] Paper feed sensor (PS3)
--	-----------------------------

**MS91x and MX91x SERIES
Location**

Sensors

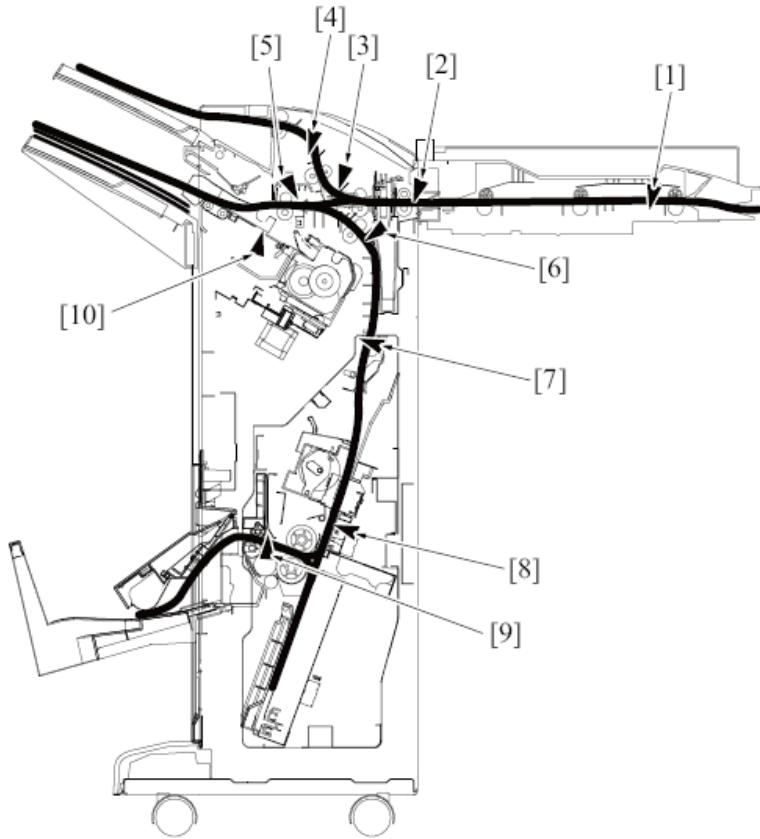
FS-533/PK-519



[1]	Paper surface detect sensor/1 (PS102)	[2]	Paper feed sensor (PS101)
[3]	Paper feed sensor (PS201)	[4]	Punch motor sensor (PS202)
[5]	Stapler home sensor (PS110)	-	-

**MS91x and MX91x SERIES
Location
Sensors**

FS-534/PK-520/SD-511



[1]	RU entrance sensor (PS2)	[2]	FNS entrance sensor (PS4)
[3]	Punch position sensor (PS2)	[4]	Sub tray exit sensor (PS8)
[5]	Saddle exit sensor (PS5)	[6]	Staple stacker paper detection sensor (PS31)
[7]	Saddle entrance sensor (PS1)	[8]	Center staple/fold stacker paper detect sensor (PS3)
[9]	Fold exit sensor (PS12)	[10]	Maintray exit sensor (PS16)

Appendix A
Plastic containing brominated flame retardants

Plastics greater than or equal 25g

Part Description	Parts Marking	Location
Tray	>PS-HI FR(17)<	Paper Exit Tray
Guide	>PS-HI FR(17)<	Developer Unit Lock Section
Bypass Tray /Upper	>PS-HI FR(17)<	Bypass Tray Section
Cover /Front	>PS-HI FR(17)<	Inner Cover Section
Collection Box	>PS-HI FR(17)<	Waste Toner Box
Rail	>PET-(GF+MD)40 FR(17)<	Main Frame Section
Guide Cover	>PET-(GF+MD)40 FR(17)<	Fusing Unit
Cover /Upper	>PS-HI FR(17)<	Reversal Unit
Holder	>PS-HI FR(17)<	Accessory part
Collection Box	>PS-HI FR(17)<	Waste Toner Box
Cover /Lower	>PET-(GF+MD)40 FR(17)<	Fusing Unit
Developing Housing	>ABS-GF20 FR(17) <	Developer Unit
Duct	>PS-HI FR(17)<	Air Duct Section
Cover	>PS-HI FR(17)<	Cassette Section
Housing	>ABS-GF20 FR(17) <	Photoconductor Unit
Cover	>PS-HI FR(17)<	Cassette Section
Duct /1	>PS-HI FR(17)<	Ozone Duct Section
Cover /Inside	>PS-HI FR(17)<	Inner Cover Section
Cover /Front	>PS-HI FR(17)<	Inner Cover Section
Cooling Duct	>PS-HI FR(17)<	Main Power Supply Section
Housing	>PS-HI FR(17)<	Transfer Unit
Guide Plate	>PET-(GF+MD)40 FR(17)<	Fusing Unit
Regulating Plate	>PET-(GF+MD)40 FR(17)<	Paper Exit Section

Cover /Rear	>PET-(GF+MD)40 FR(17)<	Fusing Unit
Developing Cover	>ABS-GF20 FR(17) <	Developer Unit
Auxiliary Tray	>PS-HI FR(17)<	Bypass Tray Section
Cover /Front	>PET-(GF+MD)40 FR(17)<	Fusing Unit
Rail	>ABS-GF20 FR(17) <	Main Frame Section
Holder	>PS-HI FR(17)<	Paper Exit Section
Installing Spacer	>PS-HI FR(17)<	Accessory part
Duct /1	>PS-HI FR(17)<	Ozone Duct Section
Duct /2	>PS-HI FR(17)<	Air Duct Section
Guide Plate	>PET-(GF+MD)40 FR(17)<	Fusing Unit
Cover	>PS-HI FR(17)<	Developer Unit
Duct /3	>PS-HI FR(17)<	Ozone Duct Section
Duct /2	>PS-HI FR(17)<	Ozone Duct Section
Holder	>PS-HI FR(17)<	Paper Exit Section
Guide	>PS-HI FR(17)<	Electrical Mounting Section
Duct /3	>PS-HI FR(17)<	Air Duct Section
Holder	>PET-(GF+MD)40 FR(17)<	Fusing Unit

Appendix A
Plastic containing brominated flame retardants

Plastics less than or equal 25g

Part Description	Parts Marking	Location
Scattering prevention Plate	>PS-HI FR(17)<	Developer Unit
Holder	>PET-(GF+MD)40 FR(17)<	Fusing Unit
Duct /1	>PS-HI FR(17)<	Air Duct Section
Holder	>PS-HI FR(17)<	Electrical Mounting Section
Wiring Guide	>PS-HI FR(17)<	Electrical Mounting Section
Holder	>PET-(GF+MD)40 FR(17)<	Fusing Unit
Positioning Plate	>PC-GF20 FR(17)<	Air Duct Section
Duct	>PS-HI FR(17)<	Electrical Mounting Section
Guide	>PS-HI FR(17)<	Air Duct Section
Duct /2	>PS-HI FR(17)<	Air Duct Section
Duct /1	>PS-HI FR(17)<	Ozone Duct Section
Mounting Plate	>ABS FR(17) <	Fusing Unit
Duct /2	>PS-HI FR(17)<	Controller Box
Guide Plate	>PET-(GF+MD)40 FR(17)<	Erase Lamp Section
Duct	>PS-HI FR(17)<	Bypass Tray Section
Rail	>PS-HI FR(17)<	Waste Toner Box
Auxiliary Guide	>PS-HI FR(17)<	Developer Unit
Holder	>PS-HI FR(17)<	Fusing Unit
Cover	>PS-HI FR(17)<	Ozone Duct Section
Holder	>PET-(GF+MD)40 FR(17)<	Scanner Section
Duct	>PS-HI FR(17)<	Scanner Section
Cover	>PS-HI FR(17)<	Scanner Section
Guide	>PS-HI FR(17)<	Conveyance Section

Guide Part	>PS-HI FR(17)<	Developer Unit
Holding Shutter	>PS-HI FR(17)<	Fusing Unit