

Printing

Print materials

Supplies

Troubleshooting

Administration

Your printer alerts you with a beep and a **88 Cartridge Low** (C-Cyan, Y-Yellow, M-Magenta, K-Black) message on the operator panel display when the indicated ink cartridge is getting low on ink. If the ink low alarm setting is turned off, you still see the operator panel message.

If you are using the status window or MarkVision, you can monitor the ink levels for each ink cartridge from your computer screen. The status window alerts you when an ink cartridge is getting low.



Printing

Print materials

Supplies

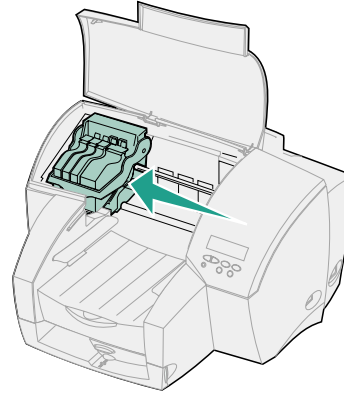
Troubleshooting

Administration

When a **89 Cartridge Empty XXXX** message appears, the printer stops printing until you replace the indicated ink cartridge.

- 1 Open the printer front cover.

The carrier moves to the load position at the far left.



Printing

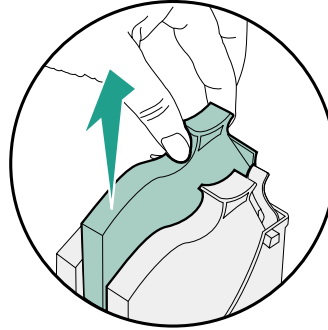
Print materials

Supplies

Troubleshooting

Administration

- 2 Squeeze the rear latch of the ink cartridge you are replacing and lift it up and out of the printer.



Printing

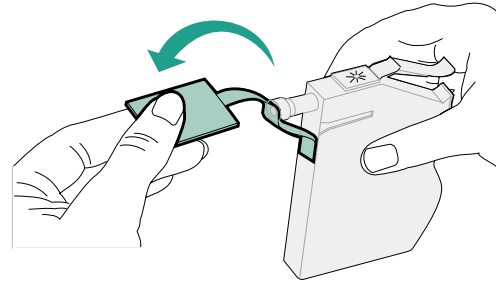
Print materials

Supplies

Troubleshooting

Administration

3 Remove the new ink cartridge from its packaging and pull off the tape.



Printing

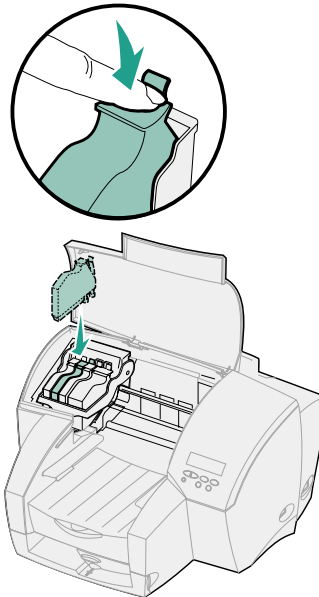
Print materials

Supplies

Troubleshooting

Administration

- 4 Insert the ink cartridge into the corresponding printhead slot and push down on the cartridge until it is securely in place. Avoid touching the release tab on the cartridge or it will pop out of the printhead.



- 5 Close the front cover.



Printing

Print materials

Supplies

Troubleshooting

Administration

To read more about ink cartridge messages, just click the message:

31 Defective Ink Cartridge

31 Missing Cartridge

32 Unsupported Cartridge

88 Cartridge Low

89 Cartridge Empty

Cartridge Life Expired

Cartridge Life Warning

