

All-in-One with PictBridge X2470



Photo capable with
PictBridge compatible
digital cameras



LEXMARK

X2470



Key Features

Color and B&W Printing:

- Up to 4800 x 1200 dpi print resolution
- Print up to 17 ppm color or text documents
- Accu-feed™ Paper Handling System Virtually Eliminates Paper Jams

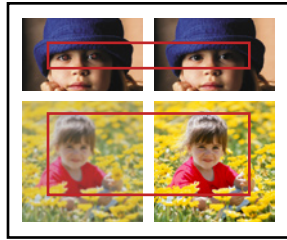


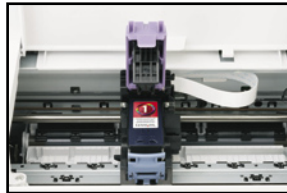
Photo Features:

- Photo Editing Software featuring 1-touch Red Eye Removal and 1-touch Color Fix
- Photo capable printing from PictBridge compatible digital cameras
- Borderless 4" x 6" prints as fast as 38 seconds*



Color and Photo Copying:

- Convenient and easy borderless 4" x 6" copy button
- 1-touch stand-alone copy
- Reduction/enlargement capacity from 25% - 400% including popular photo sizes
- 1-99 copies at a time



Color Scanning:

- Flatbed scanner easily handles thick books, reports, brochures and more
- 48-bit color scanner depth; 12-bit internal grayscale
- Up to 600 x 1200 ppi optical resolution



Only 1 Cartridge to Replace:

- The #1 Cartridge contains color ink that produces process black, giving the customer the flexibility to print everything from text to high-quality photos



*Printing without a PC in draft mode and excluding processing time.



For Best Results Use Lexmark Ink Cartridges and Lexmark Photo Paper

X2470 Series Standard Box Contents+

- X2470 Printer
- #1 Starter Cartridge
- One Power Supply and Cord
- Installation Software CD-ROM
- Getting Started Booklet and Setup Sheet (USB cable not included, please purchase separately)

+ Some models may include additional promotional items.

www.lexmark.com

Product Specifications

Compatibility:

- Windows 98 / ME / 2000 / XP

Connectivity:

- Print directly from PictBridge compatible digital cameras
- USB

Maximum Monthly Volume:

- 1000 pages per month

Compliance:

- ENERGY STAR®

Warranty:

- One-year LexExpress™ limited warranty with second business day exchange

Product Size (W x D x H) and Weight:

- 14.78" x 11.26" x 6.0" (Tray Retracted)
- 14.78" x 18.12" x 10.86" (Tray Extended)
- 10 lbs.

Pallet Size (W x D x H) and Weight:

- 48" x 40" x 45.85"
- 560 lbs. - loaded weight
- Pallet quantity: 42

Paper Capacity:

- Input—Up to 100 sheets of plain paper
- Output—25 sheets of plain paper

Paper Sizes and Types:

- Letter, legal, A4, A5, A6, B5, executive, statement, index (3" x 5"), 4" x 6", photo (3.5" x 5"), Hagaki, 10 cm x 15 cm, 13 cm x 18 cm, L, 2L, banner, custom sizes (up to 8.5" x 17")
- Plain, coated, photo/glossy, envelope, banner, transparency, iron-on transfer, index cards and labels
- Envelope sizes: 6 3/4, 7 3/4, 9, 10, DL, C5, C6, B5, A2 Baronial, custom sizes
- Borderless sizes: Letter, A4, A5, A6, Hagaki, 3.5" x 5", 4" x 6", 10 cm x 15 cm, 5" x 7", 13 cm x 18 cm, L, 2L, B5

Cartridge Compatibility:



All specifications, capabilities, offers and prices are subject to change without notice.

Lexmark, Lexmark with the diamond design and LexExpress are trademarks of Lexmark International, Inc., registered in the United States and/or other countries. Accu-feed is a trademark of Lexmark International, Inc. All other trademarks are the property of their respective owners. © 2006 Lexmark International, Inc., 740 West New Circle Road, Lexington, KY 40550.

Printed in the U.S.A. 3/06

X247010