

Please find enclosed a snap shot of your school's printer environment. The printer breakdown and data encompasses only the printers we can see on your network. You may have additional printers that are locally connected (e.g. USB attached), but those are not included in this breakdown.

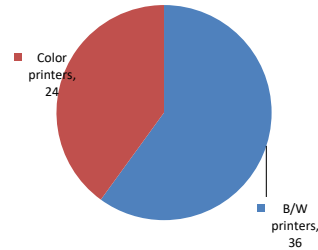
Chart 1 – School Printer Breakdown

This provides your school's enrollment, along with the number of printers, including the distribution between B/W and color printers.

AMERICAS SCHOOL OF HEROES

Enrollment	1961
B/W printers	36
Color printers	24
Total printers	60

Color/Mono Device Breakdown



From the list provided on page 3 are all of your printers represented? If not, how many are missing Providing Lexmark the asset data that is missing will allow us to give you a more accurate picture of your printer environment.

Do you know how many printers you have in your main office, compared to the number of people who sit in the main office? Reducing the number of devices and using the most efficient models in the right locations can help your school save money.

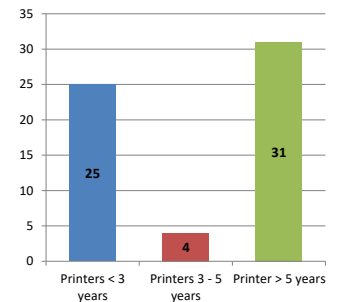
Chart 2 – Printer Age Statistics

Here we show the average age of your printers and show the distribution among 3 age categories; under 3 years old, 3-5 years old and over 5 years old.

Printer Age Statistics

Average Age (years)	8
Printers < 3 years	25
Printers 3 - 5 years	4
Printer > 5 years	31

Printer Age Statistics



The age of your printer fleet plays a large role in your annual printer maintenance and toner cost. The DOE only supports printers 6 years and younger.

Once the warranty expires and the age of your device exceeds 6 years, maintenance and repairs become very costly.

New printers have higher toner yields than older printers, resulting in lower cost per page which saves money.

Newer printers are Energy Star compliant and have advanced eco settings which help reduce energy usage and saves money.

Glossary

B/W - Black and White Printing Only

Color - Color or Black and White Printing

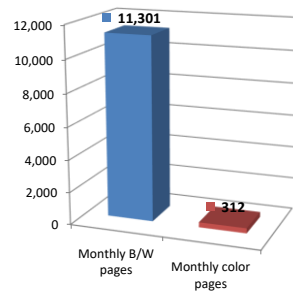
Duplex - Printing on both sides of the paper.

Simplex - Single Sided Printing

Chart 3 – Volume of Pages Printed

This provides your printed page volumes for the previous month for both B/W and color print jobs. In addition, a utilization percentage is calculated by comparing your print volume for each printer to the maximum monthly volume capacity for that printer model.

Color/Mono Pages Printed



Volume of pages printed

Monthly B/W pages	11,301
Monthly color pages	312
Total monthly pages	11,613
Color page %	3%
Utilization %	1%

[Do you know if all of your printers are being used and how much?](#)

Knowing where volumes are created helps identify areas for consolidation and helps you select the most efficient printers for replacement.

[Are you printing a large amount of color volume?](#)

Controlling color volume, which typically costs more than black and white, can help your school save money.

Chart 4 – Duplex Breakdown

This section shows the percentage of duplexed (double-sided) pages printed along with your duplex opportunity. Duplex opportunity is the total number of pages that could be printed duplex and does not include single page documents. Keep in mind, only the newer printers report duplex statistics. The duplex opportunity shows the prior month's print volume, from the printers with duplex statistics, that could have been duplexed.

Duplex Vs. Simplex



Duplex breakdown

Duplex opportunity	Info Not Available
Duplex	0%

[Did you know that your printers are able to print on both back and front of the page?](#)

Increasing your school's use of double sided printing helps reduce your environmental impact and will help your school save money.

[The average duplex rate for the NYC DOE is 14%](#)

A modest improvement in duplex of 10% would reduce the carbon footprint by over 435,000 pounds of CO₂ per year, and save the DOE over \$78,000 in paper costs annually.

[Lexmark printers 6 years and younger all have duplex capability. The following duplex initiatives can reduce paper consumption and save money:](#)

Setting duplex as your default setting on your printer

Educating end users about the benefit of duplex printing.

[For more information on how the DOE is focused on Sustainability check:](#)

<http://schools.nyc.gov/community/facilities/sustainability/about/>

Actions you can take to Save your School Money

Use highest yield toner whenever possible to lower the cost per page.
 Consider replacing printers over 6 years old to optimize eco-friendly printer environment.
 Duplex multiple page documents when possible to reduce paper usage.

Printer details

Model	Serial Number	Age in Years	Utilization	ATS Printer	Avg Mono Pages	Avg Color Pages	Avg Monthly Volume
CS510DE	502746946RRDX	2					

CS510DE	502746946RRDN	2				
CS510DE	502746946RRDF	2				
CS510DE	502746946RRDR	2	3%		97	184
CS510DE	502746946RRDT	2				
CS510DE	502710946D9DD	4				
CS510DE	502730946FFMX	3	5%		124	349
CX725DHE	75289220F402B	0				
E460dw	72H8WWT	9				
MS510DN	45147GHH4H2C4	2				
MS510dn	451432HH0WV4K	6				
MS510DN	45147GHH4H24Y	2				
MS510DN	45147GHH4H25F	2				
MS621DN	460091330RB7Z	1				
MS810	502728945F757	3	0%		63	63
MS822DE	4064835012BGR	1	6%	Yes	2753	2753
MS822DE	4064821010K6F	1				
MS822DE	4064821010K7F	1				
MS822DE	4064835012BGV	1	2%		936	936
MS822DE	4064903014PHZ	1	4%		1795	1795
MS822DE	4064902014MFB	1				
MS822DE	4064902014MFH	1	0%		192	192
MS822DE	4064902014MFR	1				
MS822DE	4064902014MF9	1				
MS822DE	4064903014PK0	1	1%		278	278
MS822DE	4064903014PK4	1	0%		215	215
MX410DE	70157GLM1TY07	2	0%		1	1
MX421ADE	7017901208476	1				
MX421ADE	701792330CC5W	0				
MX711dhe	74635C66016GP	4	12%	Yes	3026	3026
MX711dhe	74635C6600GY2	4		Yes		
MX711dhe Low Volt CA US	7463369905949	6				
SVCE322	9902X5F	18				
SVCE322	9903T4M	18				
SVCE322	9904DP6	18				
SVCE322	99024WX	18	167%		1250	1250
SVCE322	99024Y4	18				
SVCE322	9904DXN	15				
SVCE322	9903CFN	18				
SVCE322	99051FL	18				
SVCE322	9902X63	18				
SVCE322	9902X45	15				
SVCE322	9904X1N	15				
SVCE322	990257N	18				
SVCE322	9904DXP	18				
SVCE322	9902WW7	18				
SVCE322	99024Y1	18				
SVCT520	990423Z	15				
T52x SVCT520	9902524	18				
T640n	792YG37	11		Yes		
T640n	7911R7C	13		Yes		
T640n	792PH27	11		Yes		
T650dn	7953ZND	7	3%		571	571
T650n	795G7XW	7		Yes		
T650n	793VT52	10		Yes		
T650n	793VT2H	10		Yes		
T650n	793VT81	10		Yes		
T650n	795G7XN	7		Yes		
T650n	795G7XB	7		Yes		
T650n	7955MD5	8				

<< End of Data >>

27Q137 - Jan 2020 - Page 3

For more information regarding this snapshot, please contact your Lexmark team

Lexmark Team

CDW Team
CDW Sales Department – 800-705-4239

Title	Name	E-Mail	Phone
Client Executive	Mindy Maher	mmaher@lexmark.com	212-880-2837
Site Operations	Mark Ennis	mennis@lexmark.com	908-210-3030
Systems Engineer	TBD	TBD	TBD

Title	Name	E-Mail	Phone
Sales Manager	John Skidmore	john.skidmore@cdwg.com	(866) 687-3187
Sales Operations	Jon Gray	jongray@cdw.com	(203) 851-7133
		NYCDOE@cdwg.com	