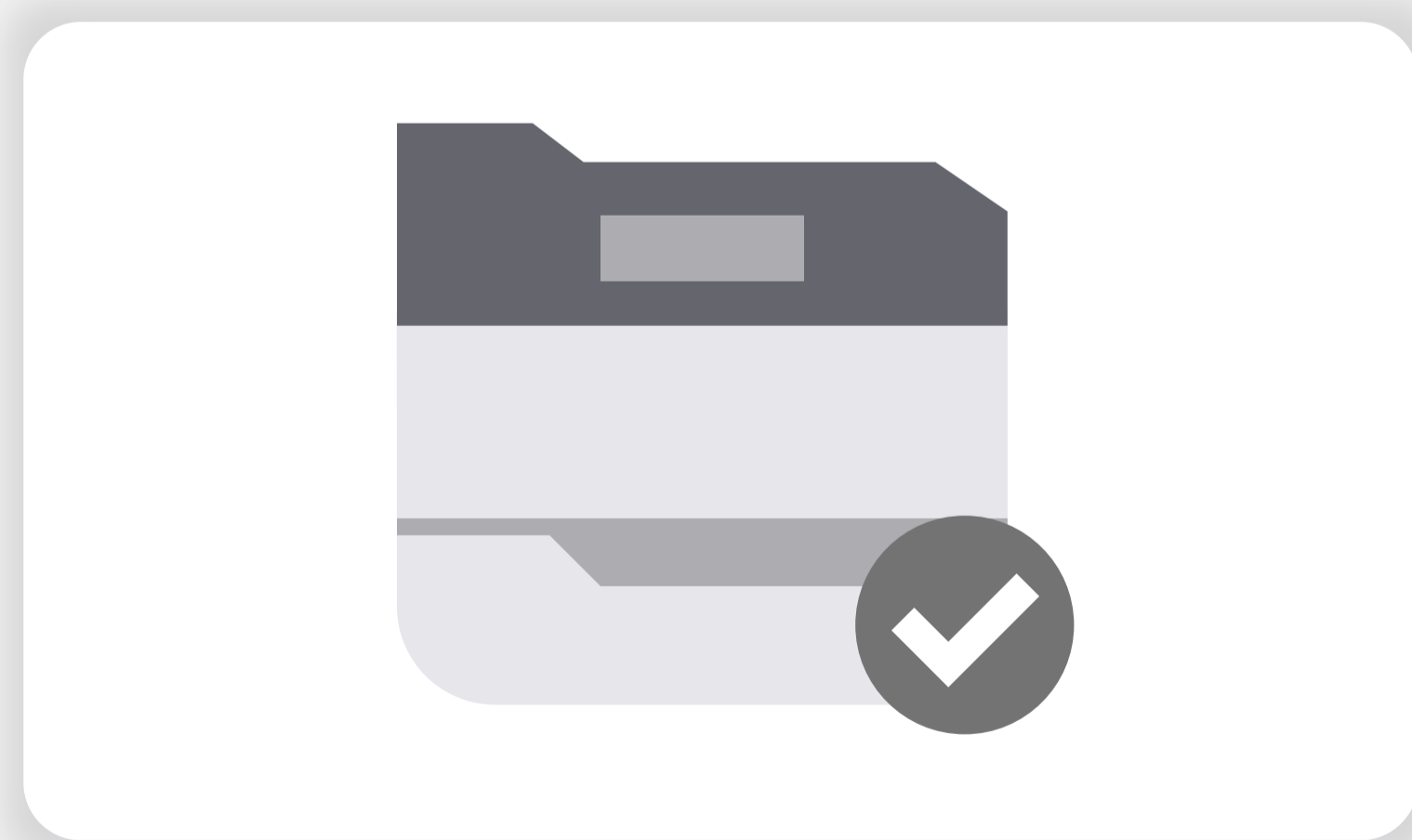


# Lexmark's Evergreen Story

A commitment to sustainability and circularity



E-waste is a growing problem, with annual increases of 2.6 million tons according to the UN's fourth Global e-waste Monitor. Lexmark addresses this by extending technology lifespan of its hardware and contributing to the circular economy.

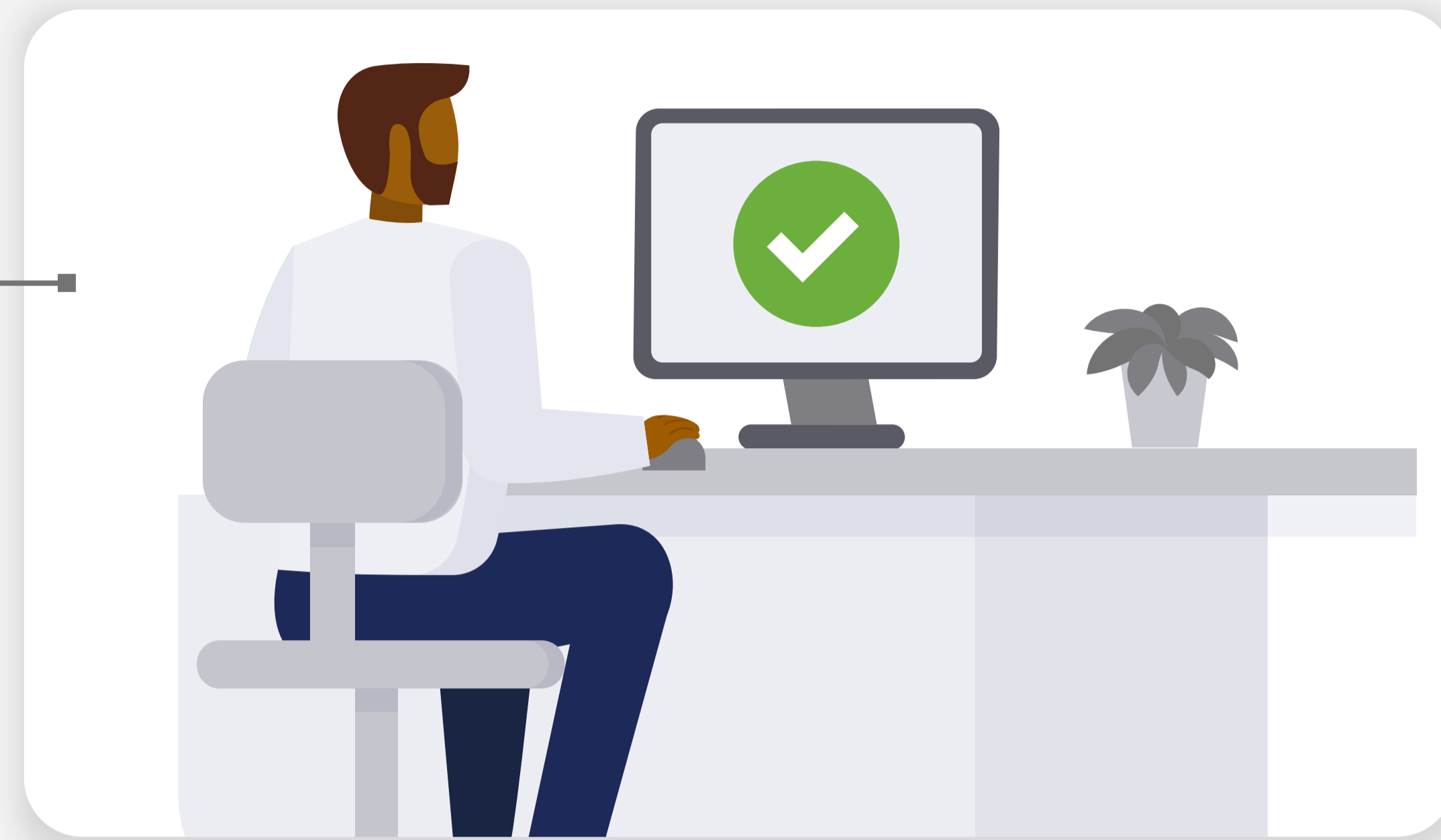


Even after the end of a contractual agreement, the life of some Lexmark devices is further extended through Lexmark Evergreen.

## A Printer's Evergreen Journey

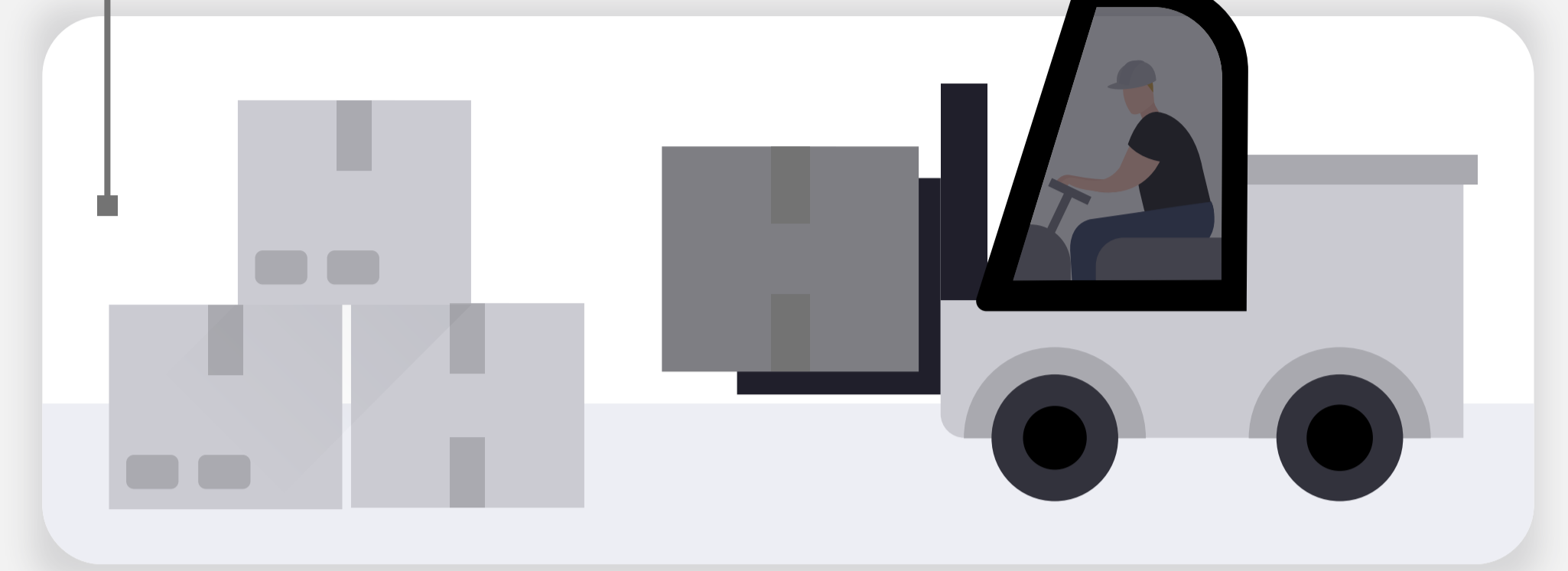
1

A printer is registered on the [Collected by Lexmark](#) platform and enrolled in the Lexmark Equipment Collection Program (LECP).



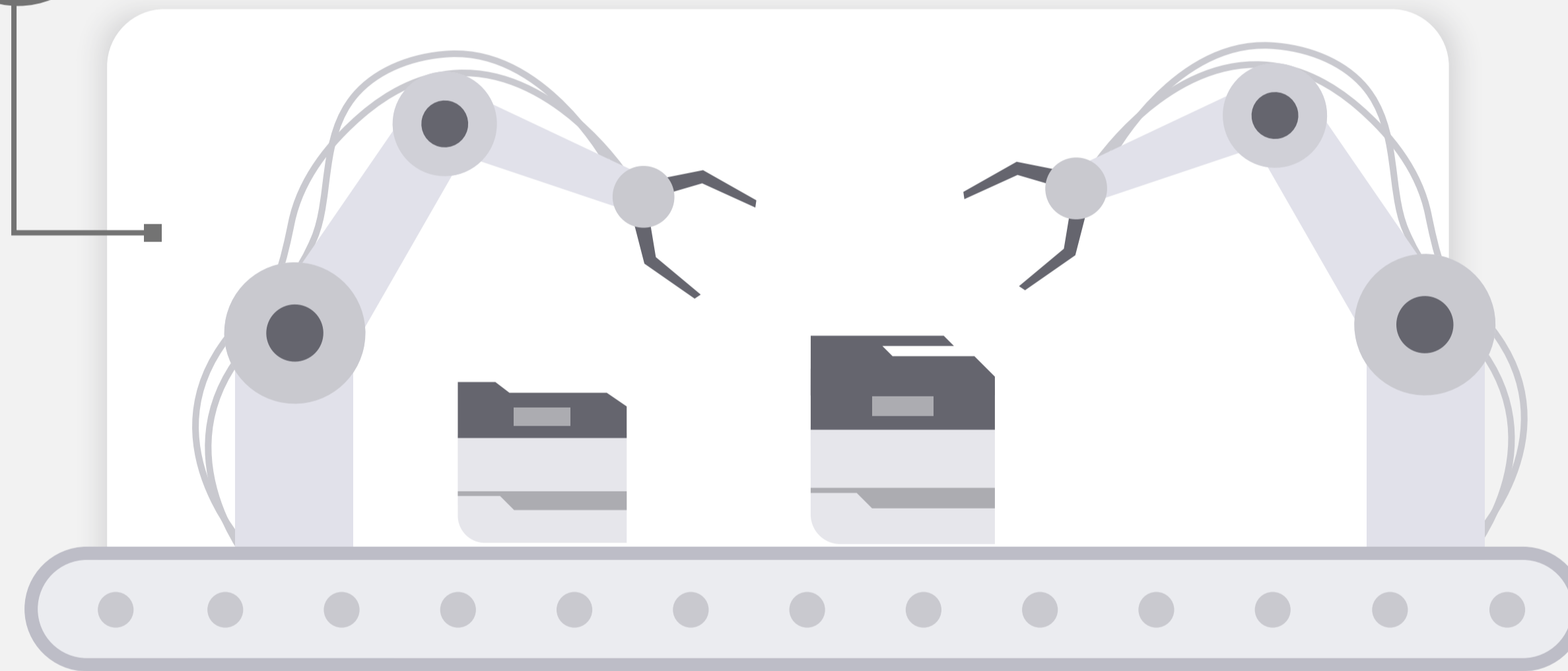
2

Once confirmed, the printer is shipped to a remanufacturing facility for inspection and rebuilding.



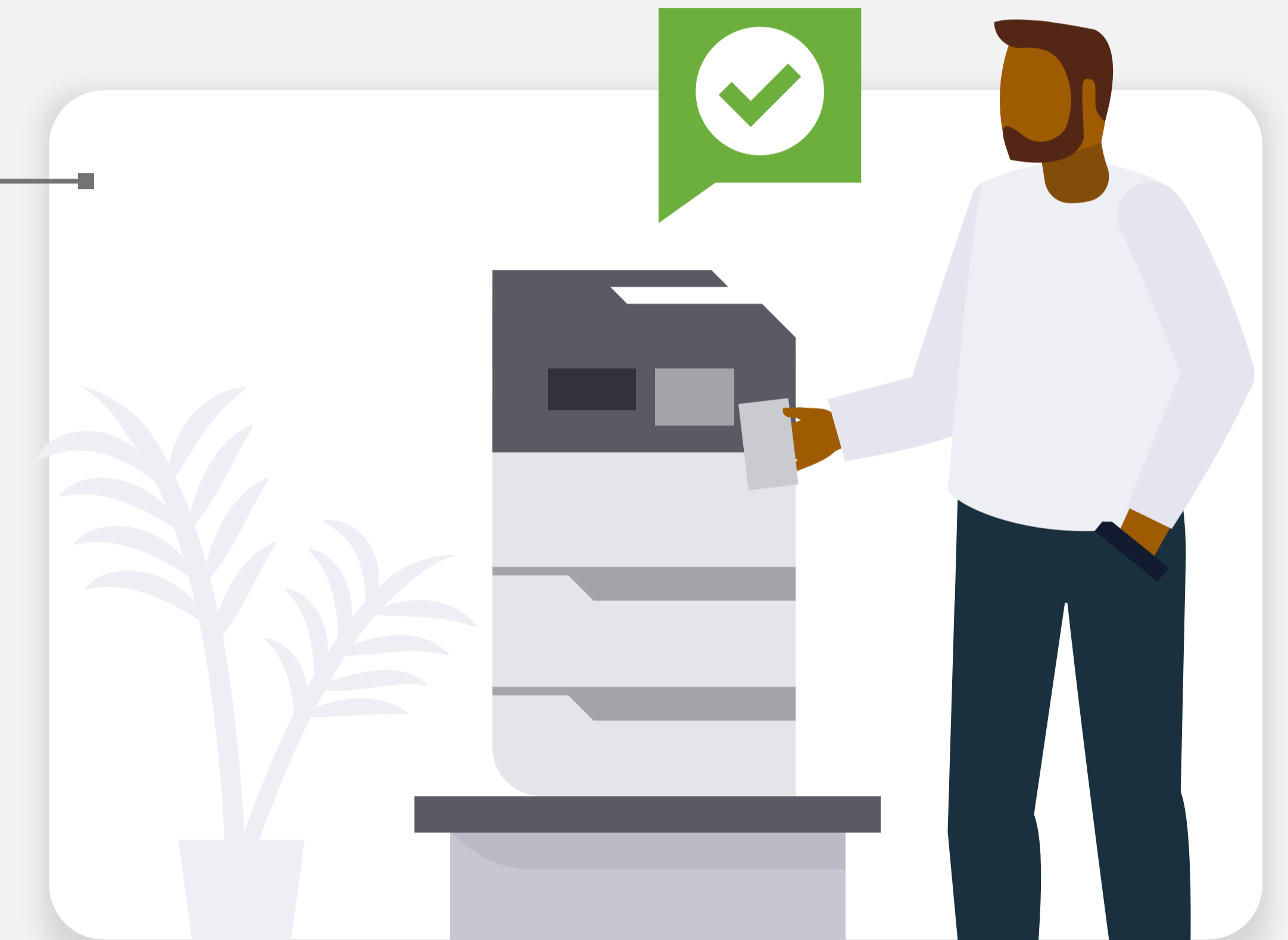
3

Worn components are replaced with genuine parts, a new hard drive is installed, and software and firmware are updated.



4

The printer is placed back into service, extending its useful life and reducing environmental waste.



### The Evergreen Line

#### Why choose the Evergreen Line?

- Cost savings
- Reduced environmental footprint
- Highest quality

#### Discover the Evergreen Line with your sustainability partner



[Learn more](#)