

# LIFE CYCLE ASSESSMENT

## LASER PRINTER CX962TSE

According to ISO 14040 and ISO 14044



With the new CX962tse color A3 multifunction printer, you get reassuring versatility, exceptional sustainability, and surprising simplicity from such sophisticated technology. Boost your productivity with vivid prints - up to 45 pages per minute\*.



Lexmark's innovative imaging solutions and technologies help customers worldwide print, secure and manage information with ease, efficiency and unmatched value. Lexmark simplifies the complex intersection of digital and printed information.

As part of the commitment to our customers, Lexmark performs Life Cycle Analysis on our products. The results of the LCA analysis continues to assist Lexmark in reducing the environmental impact of the hardware, software and services offered to our customers.

# LIFE CYCLE ASSESSMENT



Laser Printer CX962tse  
Printers and multi-functional printing units

According to ISO 14040 and ISO 14044

This document is the summary of an LCA study aiming to represent the product properties, related assumptions, and impacts of multi-functional devices. The LCAs are critically reviewed by an independent expert. Each LCA is created using the same software model and workflows while changing only printer-specific data points via parameter settings. Each LCA submitted for critical review will then be accompanied by a brief technical summary of the relevant data points, as well as a methodology report.

This LCA study is carried out based on ISO 14040 and ISO 14044, and generally follows the requirements of the Product Category Rules (PCR) Guidance for the product category printers and multi-function printing units, version 2, published by UL Environment (ULE) in April 2018. This LCA study has a few deviations from the PCR, including the following:

- The PCR bases the images per day calculation on the Version 2.0 of the Imaging Equipment ENERGY STAR® Program Requirements. However, using this estimation method results in a calculated printing volume that greatly exceeds actual customer usage. In this study, the images per day calculation has been replaced by actual customer printing data, Average Monthly Print Volumes (AMPV), per product family. The new methodology aligns with realistic customer printing.
- The PCR requires using ReCiPe 2016 or TRACI 2.1 as the impact assessment methodology. This study selects TRACI 2.1 as it is currently the only impact assessment methodology framework that incorporates US average conditions to establish characterization factors (Bare, 2012) (EPA, 2012). For global warming potential, the TRACI characterization factors are not the most current, therefore it is assessed based on the current IPCC characterization factors taken from the 6<sup>th</sup> Assessment Report (IPCC, 2021) for a 100-year timeframe (GWP100) as this is currently the most commonly used metric.
- Sphera updated paper dataset is selected to replace dataset developed based on information from the American Forest and Paper Association (NCASI, 2010).

COMPANY	Lexmark	
PRODUCT SYSTEM	Laser Printer CX962tse	
REFERENCE STANDARD	<i>ISO 14044: Environmental management— Life cycle assessment— Requirements and guidelines</i> . Geneva: International Organization for Standardization.	
DATE OF ISSUE	7/31/2024	
CONTENTS OF THE REPORT	Product definition Information about basic material and the material's origin Description of the product's manufacture Indication of product processing Information about the in-use conditions Life cycle assessment results Testing results and critical review	
This life cycle assessment was independently reviewed in accordance with ISO 14044 by:		
		Thomas Gloria, Indust. Ecology Consultants

# LIFE CYCLE ASSESSMENT



**Lexmark**<sup>TM</sup>

Laser Printer CX962tse

Printers and multi-functional printing units

According to ISO 14040 and ISO 14044

## Product Description

---

Product Type	Color Laser Printer
Printer Model	CX962tse
Maximum Print Speed	45 pages per minute
Intended use	primarily office
Range of applications	print images or text in mono or color onto paper or paper-like media
Product Lifetime	5 years
Introduction Date	6/04/2024
Product Specifications	<a href="https://www.lexmark.com/en_us/printer/30412/Lexmark-CX962tse">https://www.lexmark.com/en_us/printer/30412/Lexmark-CX962tse</a>
Functional Unit	The functional units have been defined as (1) a 1,000 page simplex job; (2) lifetime page simplex job
Product Characterization	<p>With the new CX962tse color A3 multifunction printer, you get reassuring versatility, exceptional sustainability, and surprising simplicity from such sophisticated technology. Boost your productivity with vivid prints - up to 45 pages per minute*. Intuitively navigate the 10-inch (25 cm) color touchscreen and save time with single-pass two-sided scanning. Effortlessly create everything your business requires, and custom configure your multifunction printer with interchangeable options tailored to your needs. The printer product delivered to the customer consists of the printer, a power cord, printed setup instructions, a CD/DVD that includes the User Guide and Printer Drivers and an initial set of product supplies. The printer is delivered in packaging that can be recycled locally and is not needed for product operation. Product supplies include toner cartridges, imaging kits and the fusing mechanism. The power supply is internal to the product and the imaging kit and fusing mechanism are installed at the factory. Only the toner cartridges must be installed by the customer. The printer can be setup by the customer without outside assistance.</p>

# LIFE CYCLE ASSESSMENT



**Lexmark™**

Laser Printer CX962tse

Printers and multi-functional printing units

According to ISO 14040 and ISO 14044

## Technical Data

Product Specifications		Lexmark CX962tse
<b>Printing</b>		
Display		Lexmark e-Task 10-inch (25 cm) class color touch screen
Print Speed		Up to: Black: 45 ppm <sup>1</sup> (Letter) / Color: 45 ppm <sup>1</sup> (Letter)
Time to First Page		As fast as: Black: 7.1 seconds / Color: 8.2 seconds
Print Resolution		Black: 1200 x 1200 dpi, 4800 Color Quality / Color: 4800 Color Quality, 1200 x 1200 dpi
Memory		Standard: 4 GB / Maximum: 4 GB
Hard Disk		Intelligent Storage Drive included; Magnetic Hard Disk available
Recommended Monthly Page Volume		7,000 - 50,000 pages <sup>2</sup>
Maximum Monthly Duty Cycle		Up to: 200 000 pages per month <sup>3</sup>
<b>Copying</b>		
Copy Speed		Up to: Black: 45 cpm <sup>1</sup> (Letter) / Color: 45 cpm <sup>1</sup> (Letter)
Time to First Copy		As fast as: Black: 8.5 seconds / Color: 9.5 seconds
<b>Scanning</b>		
Scanner Type / ADF Scan		Flatbed scanner with automatic document feeder / DADF (single pass Duplex)
A4/Ltr Duplex Scan Speed		Up to: Black: 240/240 sides per minute / Color: 240/240 sides per minute
A4/Ltr Simplex Scan Speed		Up to: Black: 120/120 sides per minute / Color: 120/120 sides per minute
ADF Paper Input Capacity		Up to: 300 pages 20 lb or 75 gsm bond
<b>Supplies<sup>4</sup></b>		
Laser Cartridge Yields		up to: 46,900 5-page Color (CMY) Cartridges / up to: 47,700 5-page Black Cartridge
Imaging Unit Estimated Yield		Up to: 225,000 (black) and 250,000 (color) pages, based on 3 average letter/A4-size pages per print job and ~ 5% coverage
Cartridge(s) Shipping with Product		15,000 5-page Black Toner Cartridge <sup>5</sup> , 12,000 5-page Color (CMY) Toner Cartridges <sup>5</sup>
<b>Paper Handling</b>		
Included Paper Handling		500-Sheet Output Bin, 550-Sheet Tray, 550-Sheet Tray, 2 x 550-Sheet Tray, 150-Sheet Multipurpose Feeder
Optional Paper Handling		2,250-Sheet Booklet Staple Hole Punch Finisher, 500-Sheet Staple Offset Finisher, Folding Paper Transport Unit, 1,250-Sheet Staple Hole Punch Finisher, Offset Stacker, 1,500-Sheet High-Capacity Tray, Paper Transport Unit, 2000-Sheet Tandem Tray, Cabinet
Paper Input Capacity		Up to: Standard: 2350 pages 20 lb or 75 gsm bond / Maximum: 3850 pages 20 lb or 75 gsm bond
Paper Output Capacity		Up to: Standard: 500 pages 20 lb or 75 gsm bond / Maximum: 2650 pages 20 lb or 75 gsm bond
Media Types Supported		Vinyl Labels, Labels, Card Stock, Plain Paper, Envelopes, Glossy Paper, Refer to the Paper & Specialty Media Guide
Media Sizes Supported		A6, Oficio, 7 3/4 Envelope, JIS-B4, 9 Envelope, JIS-B5, A3, Ledger, A4, Legal, SRA3, A5, Hagaki Card, Letter, B5 Envelope, C4 Envelope, Statement, C5 Envelope, Executive, DL Envelope, Folio, 10 Envelope
<b>General Information</b>		
Standard Ports		Gigabit Ethernet (10/100/1000), Front USB 2.0 Specification Hi-Speed Certified port (Type A), 802.11a/b/g/n/ac + Apple iBeacon, USB 2.0 Specification Hi-Speed Certified (Type B)
Optional Network Ports / Optional Local Ports		MarkNet N8230 Fiber Ethernet Print Server / Internal 1284-B Bidirectional Parallel, Internal RS-232C serial
Noise Level		Operating: 50 dBA (Print) / 52 dBA (Copy) / 50 dBA (Scan)
Specified Operating Environment		Altitude: 0 - 2896 Meters (9,500 Feet) / Humidity: 15 to 80% Relative Humidity / Temperature: 10 to 32.2°C (50 to 90°F)
Limited Warranty		See Statement of Limited Warranty: 1-Year Onsite Repair, Next Business Day
Size / Weight		H x W x D: 48.0 x 23.3 x 26.0 in. / 265.5 lb.
ENERGY STAR Typical Electricity Consumption		TEC: 0.69 kilowatt-hours per week

All information is subject to change without notice. Lexmark is not liable for any errors or omissions.

<sup>1</sup> Print and copy speeds measured in accordance with ISO/IEC 24734 and ISO/IEC 24735 respectively (ESAT). For more information see: [www.lexmark.com/ISOspeeds](http://www.lexmark.com/ISOspeeds).

<sup>2</sup> "Recommended Monthly Page Volume" is a range of pages that helps customers evaluate Lexmark's product offerings based on the average number of pages customers plan to print on the device each month. Lexmark recommends that the number of pages per month be within the stated range for optimum device performance, based on factors including: supplies replacement intervals, paper loading intervals, speed, and typical customer usage. <sup>3</sup> "Maximum Monthly Duty Cycle" is defined as the maximum number of pages a device could deliver in a month using a multishift operation. This metric provides a comparison of robustness in relation to other Lexmark printers and MFPs. <sup>4</sup> Product functions only with replacement cartridges designed for use in a specific geographical region. See [www.lexmark.com/regions](http://www.lexmark.com/regions) for more details. <sup>5</sup> Average continuous black or continuous composite CMY declared cartridge yield up to this number of standard pages in accordance with ISO/IEC 19798.

# LIFE CYCLE ASSESSMENT



Laser Printer CX962tse  
Printers and multi-functional printing units

According to ISO 14040 and ISO 14044

## Declaration of Basic Materials

The printer consists of mechanical, electromechanical, and electronic components. Its material composition can be described using the basic material fractions given below. Please note that the category 'Electronics' also includes all wiring.

Material	Mass (kg)
Plastics (recyclable)	36
Plastics (non-recyclable)	3.12
Ferrous Metals	73.6
Aluminum	0
Copper	0
Glass	1.69
Electronics	4.59
Other Materials	0.087
Total	119

Table 1: Basic Material Declaration

## Product Supply Chain

The printer is manufactured and assembled in Southeast China. The cartridges for the North American market are manufactured and assembled in Juarez, Mexico.

# LIFE CYCLE ASSESSMENT



Lexmark™

Laser Printer CX962tse

Printers and multi-functional printing units

According to ISO 14040 and ISO 14044

## Life Cycle Assessment Results

The following sections describe the printer's cradle-to-gate resource use and potential environmental impacts over the full printer life cycle. These represent the typical impacts for an average system sold in the North American market. All impacts are presented per functional units.

### Printer Manufacturing Resources Use

Table 2 displays the use of material resources (kg) and of non-renewable as well as renewable primary energy demand necessary for printer manufacturing, but excludes other life cycle stages of the printer (cradle-to-gate). Likewise, material and energy consumption associated with printer packaging, cartridges, and paper is excluded here.

Use of Material Resources [kg]	
Non-Renewable	2.93E003
Renewable (excl. water)	4.84E003
Water	9.76E009
Use of Non-Renewable Primary Energy [MJ]	
Crude Oil	1.26E003
Hard Coal	4.82E003
Lignite	107
Natural Gas	2.39E003
Uranium	488
Use of Renewable Primary Energy [MJ]	
Biomass	5.78E-005
Geothermal	17.7
Solar	649
Wind	322
Hydropower	350

Table 2: Use of Material and Energy Resources for Printer Manufacturing (Cradle-to-Gate)

### Energy Consumption During Utilization

Based on the ENERGY STAR® Typical Energy Consumption (TEC) test methodology, the printer is expected to have the following power consumption for an assumed average job load.

	Per 1,000 page	Per product lifetime
Energy Consumption During Utilization [kWh]	0.529	179

Table 3: At-wall power consumption during utilization

# LIFE CYCLE ASSESSMENT



Laser Printer CX962tse  
Printers and multi-functional printing units

According to ISO 14040 and ISO 14044

## Life Cycle Impact Assessment

The following provides an overview of the potential printer life cycle impacts with emissions classified and characterized to standard environmental impact metrics based on TRACI 2.1 method. Global warming potential is evaluated based on IPCC AR6. Ecotoxicity and human toxicity are not included in this study, due to their respective uncertainties.

LCIA results are relative expressions and do not predict impacts on category endpoints, the exceeding of thresholds, safety margins or risks.

	per 1000 pages including paper	per 1000 pages excluding paper	per printer lifetime including paper	per printer lifetime excluding paper
IPCC AR6 GWP 100, excl biogenic CO <sub>2</sub> [kg CO <sub>2</sub> eq.]	6.73E00	3.62E00	2.28E03	1.23E03
AP [kg SO <sub>2</sub> eq.]	3.25E-02	1.81E-02	1.10E01	6.13E00
EP [kg N eq.]	8.32E-03	8.37E-04	2.82E00	2.84E-01
ODP [kg CFC 11 eq.]	6.14E-09	6.14E-09	2.08E-06	2.08E-06
RDP [MJ surplus energy]	8.79E00	4.62E00	2.98E03	1.57E03
SFP [kg O <sub>3</sub> eq.]	4.95E-01	2.15E-01	1.68E02	7.30E01

Table 3: Summary of Life Cycle Impact Assessment Results

# LIFE CYCLE ASSESSMENT



**Lexmark**

Laser Printer CX962tse

Printers and multi-functional printing units

According to ISO 14040 and ISO 14044

## Interpretation of Results

### Dominance Analysis

Due to the 5 year lifetime and the number of pages printed per day based on the actual customer printing information, the use phase with paper dominates the life cycle impacts. The below tables and charts display the results of the dominance analysis for each impact category addressed in Table 3. The first row in each table, labeled Printer, is the manufacturing phase which includes raw material extraction and manufacturing.

#### Global Warming Potential

	per 1000 pages including paper	per 1000 pages excluding paper	per printer lifetime including paper	per printer lifetime excluding paper
Printer	2.01E00	2.01E00	6.81E02	6.81E02
Lexmark use phase <LC>	4.69E00	1.58E00	1.59E03	5.36E02
EoL phase <LC>	3.09E-02	3.09E-02	1.05E01	1.05E01

Table 4: GWP100 dominance analysis [kg CO2 equiv]

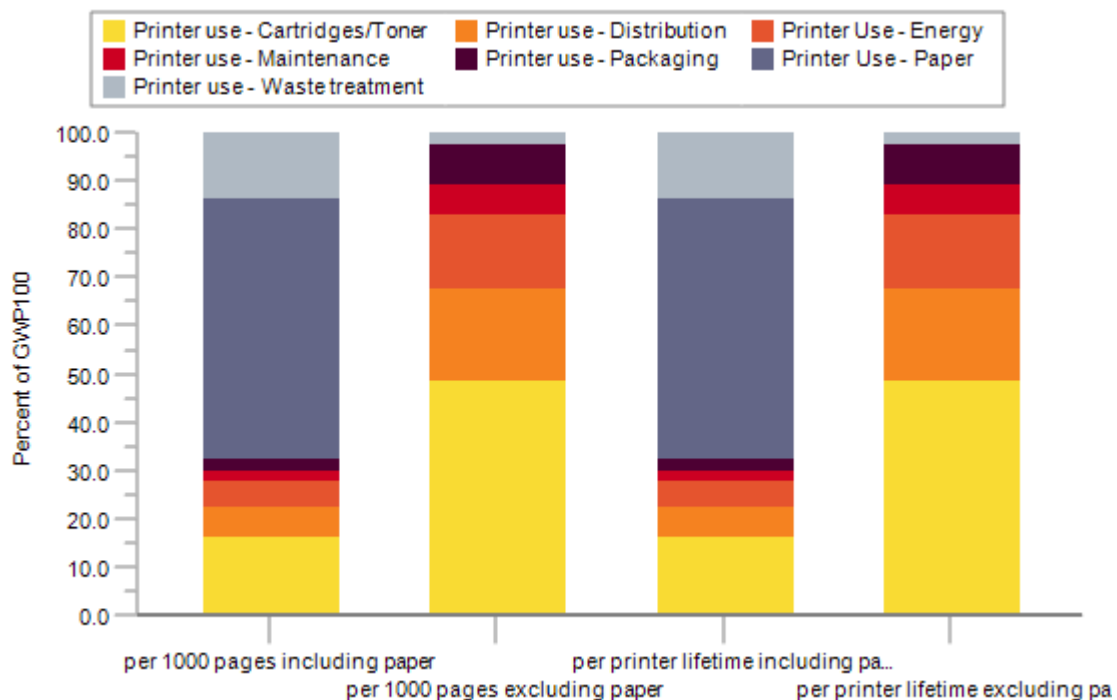


Figure 1: GWP100 dominance analysis of the life cycle stage



# LIFE CYCLE ASSESSMENT



**Lexmark**

Laser Printer CX962tse

Printers and multi-functional printing units

According to ISO 14040 and ISO 14044

## *Ozone Depletion Potential*

	per 1000 pages including paper	per 1000 pages excluding paper	per printer lifetime including paper	per printer lifetime excluding paper
Printer	4.32E-10	4.32E-10	1.47E-07	1.47E-07
Lexmark use phase <LC>	5.70E-09	5.70E-09	1.94E-06	1.94E-06
EoL phase <LC>	2.11E-16	2.11E-16	7.17E-14	7.17E-14

Table 5: ODP dominance analysis [kg CFC-11 equiv]

## *Acidification Potential*

	per 1000 pages including paper	per 1000 pages excluding paper	per printer lifetime including paper	per printer lifetime excluding paper
Printer	8.56E-03	8.56E-03	2.90E00	2.90E00
Lexmark use phase <LC>	2.38E-02	9.35E-03	8.08E00	3.17E00
EoL phase <LC>	1.50E-04	1.50E-04	5.10E-02	5.10E-02

Table 6: AP dominance analysis [kg SO<sub>2</sub> equiv]

## *Eutrophication Potential*

	per 1000 pages including paper	per 1000 pages excluding paper	per printer lifetime including paper	per printer lifetime excluding paper
Printer	3.86E-04	3.86E-04	1.31E-01	1.31E-01
Lexmark use phase <LC>	7.92E-03	4.38E-04	2.69E00	1.49E-01
EoL phase <LC>	1.30E-05	1.30E-05	4.42E-03	4.42E-03

Table 7: EP dominance analysis [kg N equiv]

## *Resource Depletion Potential (fossil fuel)*

	per 1000 pages including paper	per 1000 pages excluding paper	per printer lifetime including paper	per printer lifetime excluding paper
Printer	1.71E00	1.71E00	5.82E02	5.82E02
Lexmark use phase <LC>	7.02E00	2.85E00	2.38E03	9.68E02
EoL phase <LC>	5.75E-02	5.75E-02	1.95E01	1.95E01

Table 8: RDP dominance analysis [MJ surplus energy]

# LIFE CYCLE ASSESSMENT



Laser Printer CX962tse  
Printers and multi-functional printing units

According to ISO 14040 and ISO 14044

## Smog Formation Potential

	per 1000 pages including paper	per 1000 pages excluding paper	per printer lifetime including paper	per printer lifetime excluding paper
Printer	8.32E-02	8.32E-02	2.82E01	2.82E01
Lexmark use phase <LC>	4.08E-01	1.28E-01	1.38E02	4.36E01
EoL phase <LC>	3.44E-03	3.44E-03	1.17E00	1.17E00

Table 9: SFP dominance analysis [kg O<sub>3</sub> equiv]

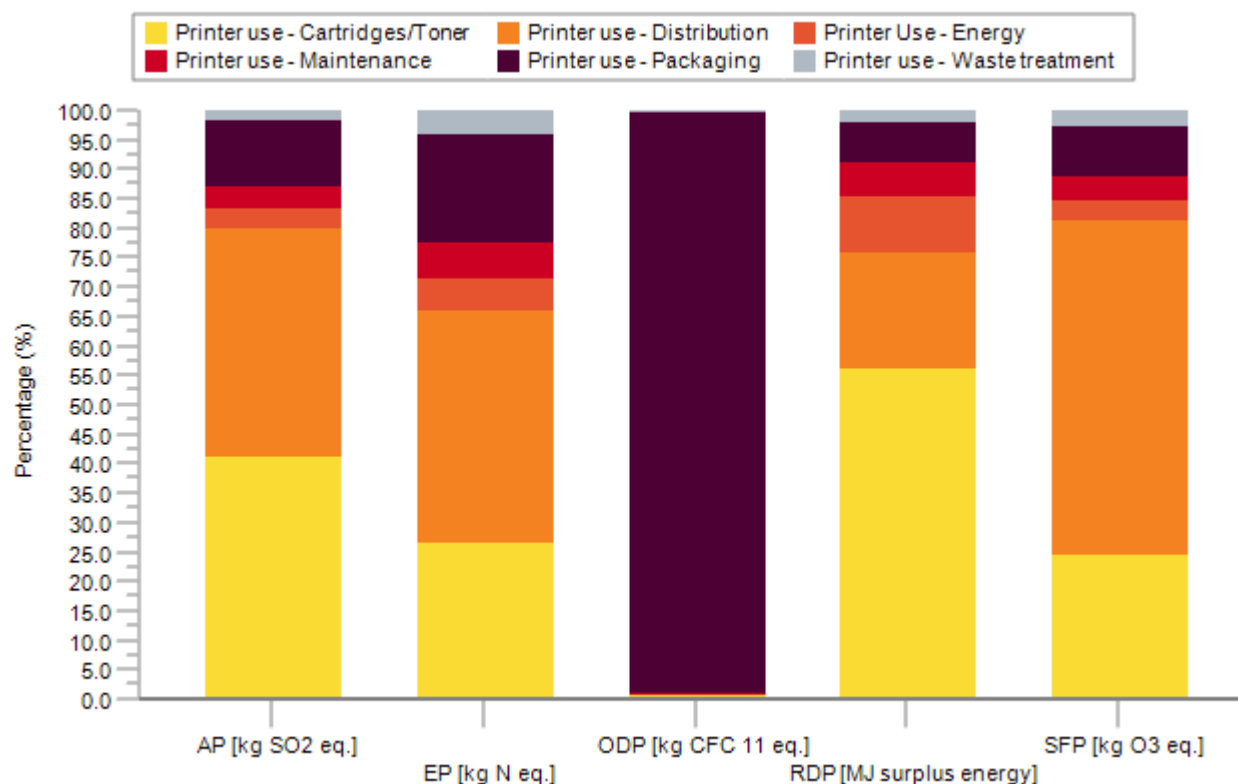


Figure 2: Contribution analysis of the use phase (per 1000 pages excluding paper)

## Assumptions and Estimations

Assumptions and estimations are documented in the methodology report, which was provided for critical review purposes alongside this document. The LCA results represent the specific printer model as sold in the North American market.

The model assumes a printer lifetime of five (5) years. The printer is modeled to print an average pages per day

# LIFE CYCLE ASSESSMENT



Laser Printer CX962tse

Printers and multi-functional printing units

According to ISO 14040 and ISO 14044

based on actual customer printing information. The printer further possesses an automatic mechanical duplexing feature.

Power consumption figures are based on ENERGY STAR® testing of the printer using the average job load described above. Consumables rate of consumption is based on the market-average yield across all available cartridge capacities. In addition, market-average use of remanufactured cartridges is taken into account, as applicable.

Transportation distances to the end consumer are based on their points of origin and the population-weighted average distance to the 100 most populous cities in the continental US based on 2020 census data. The printer as well as replacement fuser kits and waste toner bottles are manufactured in China and shipped to the point of use from the distribution center near Jeffersonville, IN, while the cartridges and the imaging unit are shipped from Ciudad Juarez, MX to Jeffersonville, IN.

The paper dataset developed by Sphera represents European modeling and used as a proxy in lieu of current US data.

The End-of-Life treatment for the printer is based on the assumption that 90% of the printers are either recycled or remanufactured, while the remainder is disposed of through local waste streams, where the metal fractions are assumed to be recycled and the remainder landfilled. The EoL cartridges are assumed to be split as such: 80% to remanufacturing or recycling, and 20% landfill.

In accordance with the cut-off methodology, materials sent to End-of-Life recycling are considered to cross the system boundary without any further transformation. Only the impacts associated with waste transportation and disposal are included in the results.

## Description of Data and Period Under Consideration

---

All primary data is based on technical documentation and sales data accessed in 2024. All background data is taken from the MLC 2024-10.8.0.14 Databases. No primary data is collected from the Original Equipment Manufacturer's manufacturing plant.

# LIFE CYCLE ASSESSMENT



Laser Printer CX962tse  
Printers and multi-functional printing units

According to ISO 14040 and ISO 14044

---

## Data Quality

---

Manufacturing data of printers and consumables is based on a combination of Bills of Material and teardown analyses and is considered to be of overall high quality with low uncertainty. Distribution from printer manufacturing to the end consumer is representative of logistical data from Lexmark and best estimates of US average shipping distances, and is of moderate quality and high uncertainty.

Printer power consumption represents measured power consumed during printer operation. The electricity consumed is measured based on TEC specification, and is of high quality and moderate uncertainty. Toner cartridge use is based on expected yields based on the ISO test standards for cartridge use, and is of high quality and low uncertainty. Replacement rate for consumable parts is based on part design specifications, and is of high quality and moderate uncertainty.

The disposition of the printer and consumables at End-of-Life is based on best-available information by the respective experts at Lexmark. This data is of average quality and moderate uncertainty.

## Background Data

---

All background datasets relevant to production, power generation, transportation, and material disposal were taken from Sphera's MLC 2024-10.8.0.14 Databases.

The additional use of third-party background data from industry associations (e.g., worldsteel) is documented in the methodology report. They represent the latest LCI data as available in the MLC 2024-10.8.0.14 Databases.

## Allocation and Methodological Principles

---

No significant allocations have been considered for the production of the printer. Allocation of production or use impacts across the various functions of a multi-function system is not included (i.e., allocation of production impacts to the provision of scanning services) and the impacts from all life cycle stages are considered within the system boundaries for the printing system.

Treatment of recycled or resold material is not considered in the body of the LCA, in accordance with the cut-off methodology.

# LIFE CYCLE ASSESSMENT



Lexmark™

Laser Printer CX962tse

Printers and multi-functional printing units

According to ISO 14040 and ISO 14044

---

## References and Standards

---

Bare, J. (2012). Tool for the Reduction and Assessment of Chemical and other Environmental Impacts (TRACI) - Software Name and Version Number: TRACI version 2.1 - User's Manual. Washington, D.C.: U.S. EPA.

EPA (2021) ENERGY STAR® Program Requirements for Imaging Equipment – Test Method (Rev. Nov-2021)  
<https://www.energystar.gov/sites/default/files/asset/document/ENERGY%20STAR%20Imaging%20Equipment%20Version%203.2%20Final%20Specification.pdf>

ISO (2006a) ISO 14025: Environmental labels and declarations – Type III environmental declarations – Principles and procedures. International Organization for Standardization. Geneva.

ISO (2006b) ISO 14040: Environmental management - Life cycle assessment – Principles and framework. International Organization for Standardization. Geneva.

ISO (2006c) ISO 14044: Environmental management - Life cycle assessment – Requirements and guidelines. International Organization for Standardization. Geneva.

NCASI (2010) Life Cycle Assessment of North American Printing and Writing Paper Products – Final Report. Prepared for the American Forest and Paper Association (AF&PA) and the Forest Products Association of Canada (FPAC) by the National Council for Air and Stream Improvement, Inc. Research Triangle Park, NC

Sphera. (2025). LCA for Experts Documentation. Retrieved from Sphera Solutions, Inc.:  
<https://sphera.com/solutions/product-stewardship/life-cycle-assessment-software-and-data/lca-for-experts/>

ULE (2018) Product Category Rules for preparing an environmental product declaration (EPD) for printers and multi-function printing units (v2.0). UL Environment. Washington, DC. Expired in April, 2023.

# LIFE CYCLE ASSESSMENT



Laser Printer CX962tse  
Printers and multi-functional printing units

According to ISO 14040 and ISO 14044

---

## Contact Information

---



Lexmark International, Inc.  
740 W. New Circle Road  
Lexington, KY 40550  
Tel: +1-859-232-2000

# LIFE CYCLE ASSESSMENT



Laser Printer CX962tse  
Printers and multi-functional printing units

According to ISO 14025

---

## Critical Reviewer:

Thomas P. Gloria, Ph. D.  
Industrial Ecology Consultants  
35 Bracebridge Rd.  
Newton, MA 02459-1728  
direct: 617.553.4929  
email: [t.gloria@industrial-ecology.com](mailto:t.gloria@industrial-ecology.com)

Dr. Gloria is a certified Life Cycle Professional (LCACP) through the American Center for Life Cycle Assessment.

# LIFE CYCLE ASSESSMENT



## Letter of Equivalency

---

**LCA Model Evaluated: CX962tse**

**Equivalent Models: CX962se, XC9645, CX962g, CX962tg**

Life Cycle Assessments (LCA) are in accordance with ISO 14040 and ISO 14044. Life Cycle Assessments provide information on a number of environmental impacts of products over their life cycle. LCAs may be used equivalently for programs with multiple configurations if the differences in configurations are evaluated and determined to be negligible to the global warming impact. Printer configurations with the same parameters for mass, typical electricity consumption (TEC), rated pages per minute are considered equivalent. In many cases, several configurations are identical, but the model names are different among various sales channels. For printer configurations that have slight differences, they are determined to be equivalent only when those differences are considered to have a negligible contribution to the LCA results.

**Accuracy of Results and Comparability:** LCAs regularly rely on estimations of impacts, and the level of accuracy in estimation of effect differs for any particular product line and reported impact. LCAs are not comparative assertions and are either not comparable or have limited comparability when they cover different life cycle stages, are based on different product category rules or are missing relevant environmental impacts. LCAs from different programs may not be comparable.

**Exclusions:** LCAs do not indicate that any environmental or social performance benchmarks are met, and there may be impacts that they do not encompass. LCAs do not typically address the site-specific environmental impacts of raw material extraction, nor are they meant to assess human health toxicity. LCAs can complement but cannot replace tools and certifications that are designed to address these impacts and/or set performance thresholds e.g. Type 1 certifications, health assessments and declarations, environmental impact assessments, etc.

Full details are documented in the LCAs methodology report, which was provided for verification purposes alongside the LCA. Assumptions and estimations generally follow the governing PCR on printing equipment. The LCA results represent the specific printer model as sold in the North American market.