

# **Disassembly of Waste Electrical and Electronic Equipment (WEEE) Manual**

EU Waste Electronic and Electrical Equipment Directive require producers to provide information of the different electronic and electrical materials and components found in their products at its end-of-life, and disassembly references to treatment and recycling facilities.

1. Product information
2. Materials and components list for selective treatment
3. Disassembly tools
4. Disassembly references

The following information is intended only for the use of recognized treatment and recycling facilities.

---

## **Section 1: Product information**

**Model name(s)**—Indicate all model name(s) within the product family

**Lexmark CS53x Series**  
CS531dw, C2335, CS531

**Lexmark CS63x Series**  
CS632dwe, CS639

---

*\* Add rows as needed*

## Section 2: Materials and components list for selective treatment

**Table 2:** Materials and components list for selective treatment

Description	Count	Notes
Polychlorinated biphenyls (PCB) containing capacitors	0	N/A
Mercury containing components, such as switches or backlighting lamps	0	N/A
Batteries	1	***** <u>Minimum Count = 1</u> ***** Lithium Manganese Oxide coin cell located on the Controller card
Printed circuit boards greater than 10 cm <sup>2</sup>	multiple	***** <u>Minimum Count = 12</u> ***** For details, see <a href="#">Annex B</a> ***** <u>Options:</u> 1 – 550/ 650 Sheet Tray 1 – Wireless card *****
Toner cartridges, liquid and pasty, as well as colour toner	9	4 – Toner cartridge 4 – Imaging unit 1 Waste toner bottle
<u>Plastic component(s)</u> that may contain BFR (brominated <sup>§</sup> flame retardants)	multiple	***** <u>Total Count = 17</u> ***** For details, See <a href="#">Annex A</a> ***** <u>Options:</u> <u>+2</u> – for each 550/ 650 Paper handling *****
Note (§) - This product may contain plastic parts with brominated flame retardants. Recycler should treat these parts separately. See section 4.3 Disclaimer.		
Asbestos waste and components which contain asbestos	0	N/A
Cathode ray tubes	0	N/A
Chlorofluorocarbons (CFC), Hydrochlorofluorocarbons (HCFC) or Hydrofluorocarbons (HFC), Hydrocarbons (HC)	0	N/A
Gas discharge lamps	0	N/A
Liquid Crystal Display (LCD) greater than 100 cm <sup>2</sup> and those back-lighted with Gas discharge lamps	0	N/A
External electrical cables	1	Power cord located on the back lower left quadrant
Components containing refractory fibres	0	N/A
Components containing radioactive substances	0	N/A
Electrolyte capacitors containing substances of concern ( <i>capacitors with height &gt; 25 mm, diameter &gt; 25 mm or proportionately similar volume</i> )	1	Capacitor located on Power Supply
Electrical and Electronic (EE) Customer Replaceable Paper handling devices	multiple	See Customer Replaceable Paper handling devices For details, See <a href="#">Annex C</a>
Electrical and Electronic (EE) Customer Replaceable Internal/External Card options	multiple	See External Card options For details, See <a href="#">Annex D</a>

## **Section 3: Common Tools for Disassembly**

**Table 3.1** - Disassembly tools

Item	Description
1	#2 Phillips screwdriver, magnetic
2	Wire cutter
3	E-clip puller or small flat-head screwdriver
4	Standard slotted head screwdriver





## **Section 4: Disassembly references**

### **4.1 Removal procedure(s)**

WEEE materials and components removal procedures are available upon request.

Please Contact: [recycling@lexmark.com](mailto:recycling@lexmark.com)

### **4.2 Graphical illustration of material's and component's location**

-  LCD > 100 cm<sup>2</sup>
-  PCBs > 10 cm<sup>2</sup>
-  Printer components containing Brominated flame retardants
-  Battery

**Please note:** Graphic illustrations contained in this document may differ slightly from actual components

### **4.3 Disclaimer**

#### **Statement on WEEE Bromine Levels**

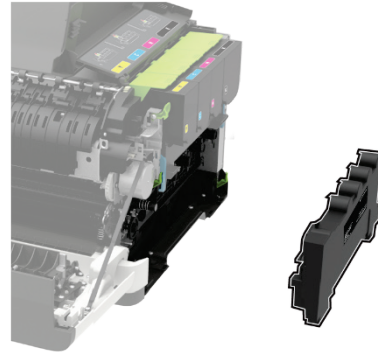
Manufacturer is compliant with the European Directive 2012/19/EU and European Commission's mandated technical specification CLC/TS 50625-3-1:2015 stating that plastic containing brominated flame retardants (BFR) must be removed from any separately collected WEEE (Article 8, Annex VII) if total bromine concentration in the fraction is known to be >2000 ppm, or expected to be >2000 ppm, or if it is not declared. Concentrations of bromine <2000 ppm are acceptable for reuse and do not require separation, so that the re-use and recycling of components or whole appliances is not hindered per Annex II, Section 3 of the WEEE Directive (2002/96/EU), and Annex VII, Section 3 of the WEEE Directive (2012/19/EU).

## Section 5: Supplies

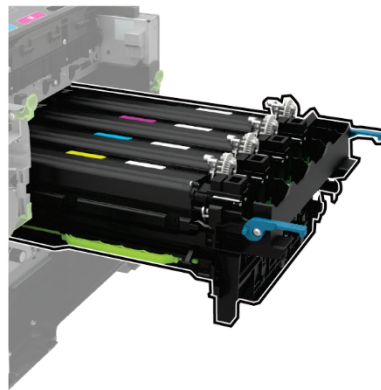
- LCD > 100 cm<sup>2</sup>
- PCBs > 10 cm<sup>2</sup>
- Printer components containing Brominated flame retardants
- Battery



**Figure 5.1:** Toner Cartridge



**Figure 5.2:** Waste toner bottle



**Figure 5.3:** Imaging Unit

**Table 5: Supplies** – Printed Circuit Boards >10cm<sup>2</sup> and Plastic with Brominated flame retardants

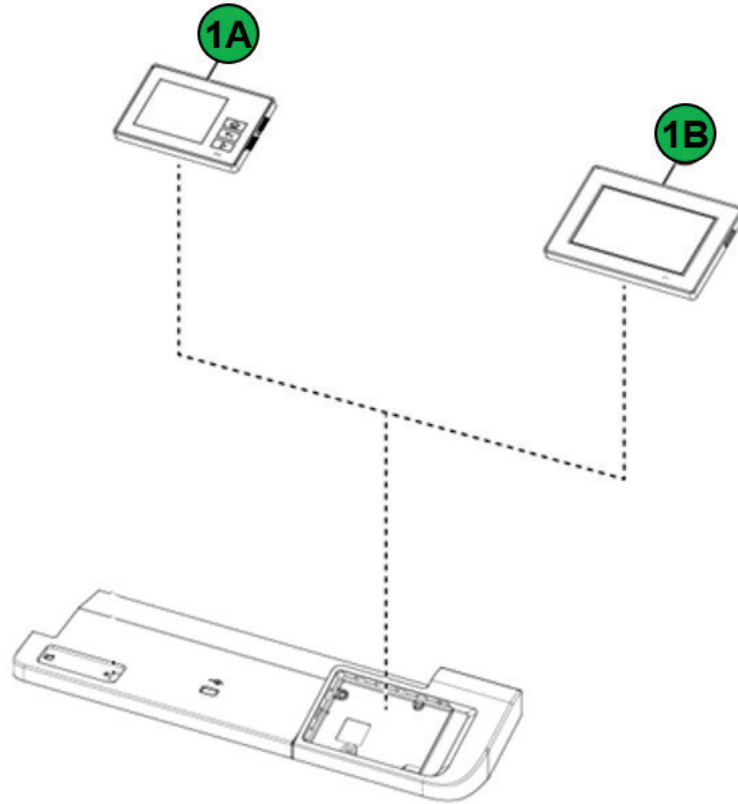
Item	Description
--	None

**Table Component Count** (without options)

LCD>100cm <sup>2</sup>	= 0
PCBs>10cm <sup>2</sup>	= 0
BFR Plastics	= 0
Battery	= 0

## Section 6: Control Panel

- LCD > 100 cm<sup>2</sup>
- PCBs > 10 cm<sup>2</sup>
- Printer components containing Brominated flame retardants
- Battery



**Figure 6.1:** Control Panel

**Table 6:** Control Panel - Printed Circuit Boards >10cm<sup>2</sup> and Plastic with Brominated flame retardants

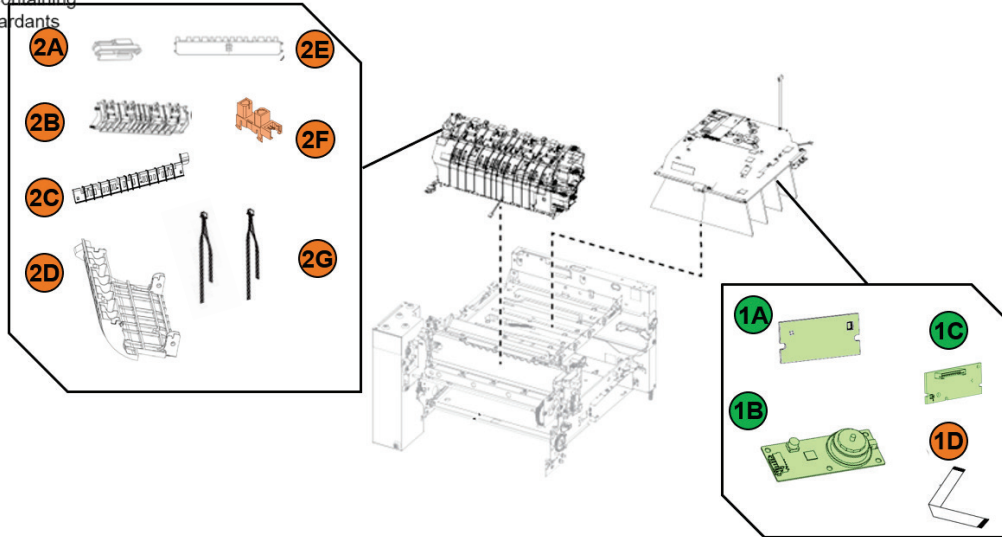
Item	Description
1A	2.8 in Control panel display assembly UICC
1B	4.3 in Control panel display assembly UICC

**Table Component Count** (*without options*)

LCD>100cm<sup>2</sup> = 0  
 PCBs>10cm<sup>2</sup> = 1  
 BFR Plastics = 0  
 Battery = 0

## Section 7: EP components

- LCD > 100 cm<sup>2</sup>
- PCBs > 10 cm<sup>2</sup>
- Printer components containing Brominated flame retardants
- Battery



**Figure 7.1:** EP components

**Table 7:** EP Components - Printed Circuit Boards >10cm<sup>2</sup> and Plastic with Brominated flame retardants

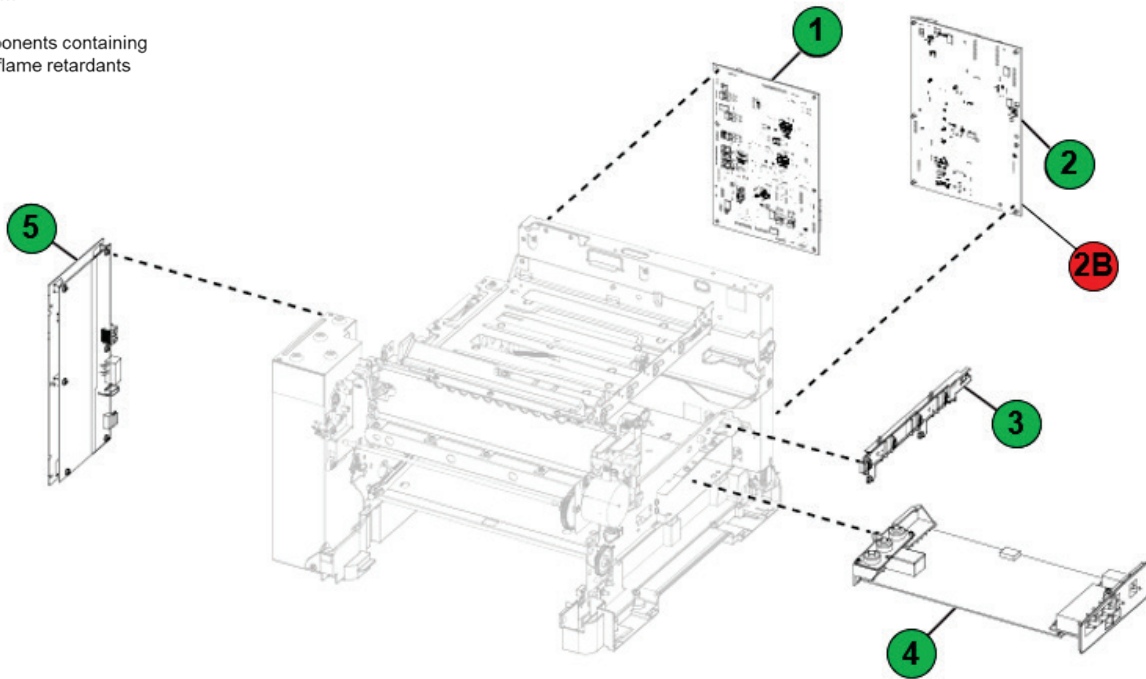
Item	Description
1A	Printhead motor driver PCBA
1B	Printhead Motor PCBA
1C	Printhead Laser driver PCBA
1D	Printhead Tape
2A	HOUSING-HEATER AC CONNECTOR
2B	GUIDE - INNER EXIT
2C	GUIDE – OUTER EXIT
2D	GUIDE - DUPLEX
2E	GUIDE - ENTRY
2F	Sensor (Photo)
2G	Sensor (Thermistor) 2x

**Table Component Count** (without options)

LCD>100cm<sup>2</sup> = 0  
 PCBs>10cm<sup>2</sup> = 3  
 BFR Plastics = 9  
 Battery = 0

## Section 8: Electronics

- LCD > 100 cm<sup>2</sup>
- PCBs > 10 cm<sup>2</sup>
- Printer components containing Brominated flame retardants
- Battery



**Figure 8.1:** Electronics

**Table 8:** Electronics - Printed Circuit Boards >10cm<sup>2</sup> and Plastic with Brominated flame retardants

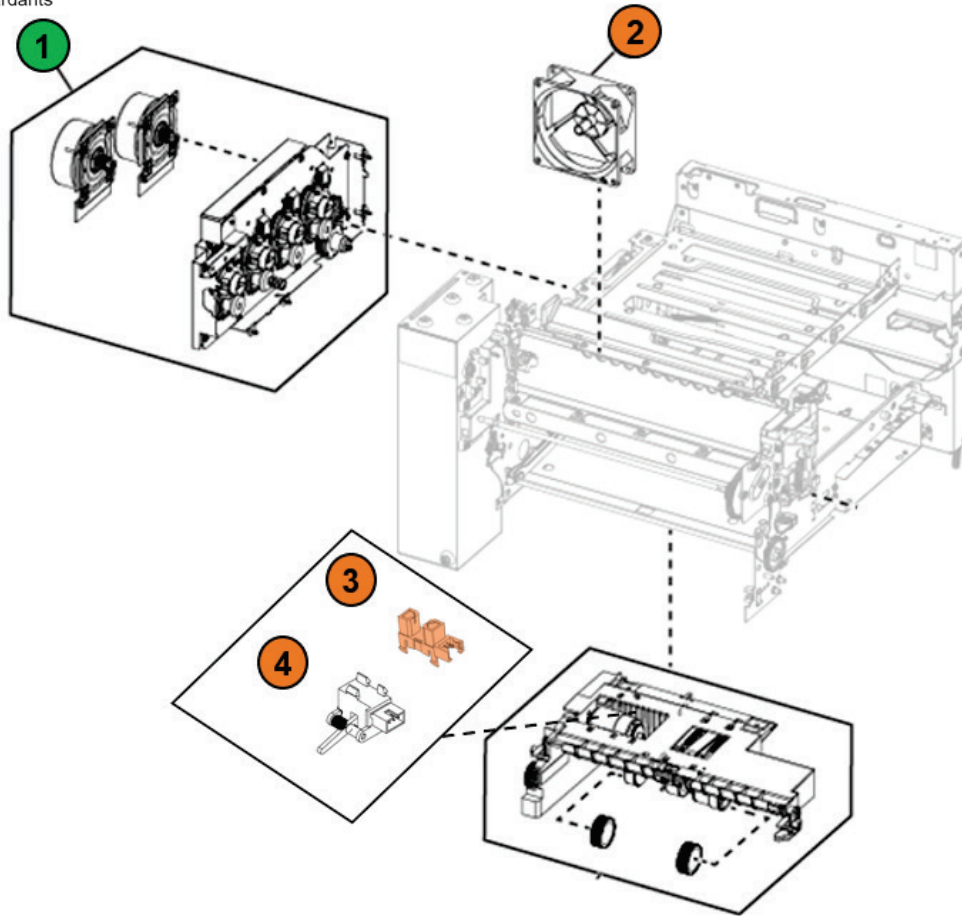
Item	Description
1	Engine board
2	Controller board
2B	Battery
3	Toner meter card
4	HVPS
5	LVPS

**Table Component Count** (*without options*)

LCD>100cm<sup>2</sup> = 0  
 PCBs>10cm<sup>2</sup> = 5  
 BFR Plastics = 0  
 Battery = 1

## Section 9: Motors

- LCD > 100 cm<sup>2</sup>
- PCBs > 10 cm<sup>2</sup>
- Printer components containing Brominated flame retardants
- Battery



**Figure 9.1:** Motors

**Table 9:** Motors - Printed Circuit Boards >10cm<sup>2</sup> and Plastic with Brominated flame retardants

Item	Description
1	EP Drive motors 2x
2	Fan
3	Sensor (Photo)
4	Sensor (Staging)

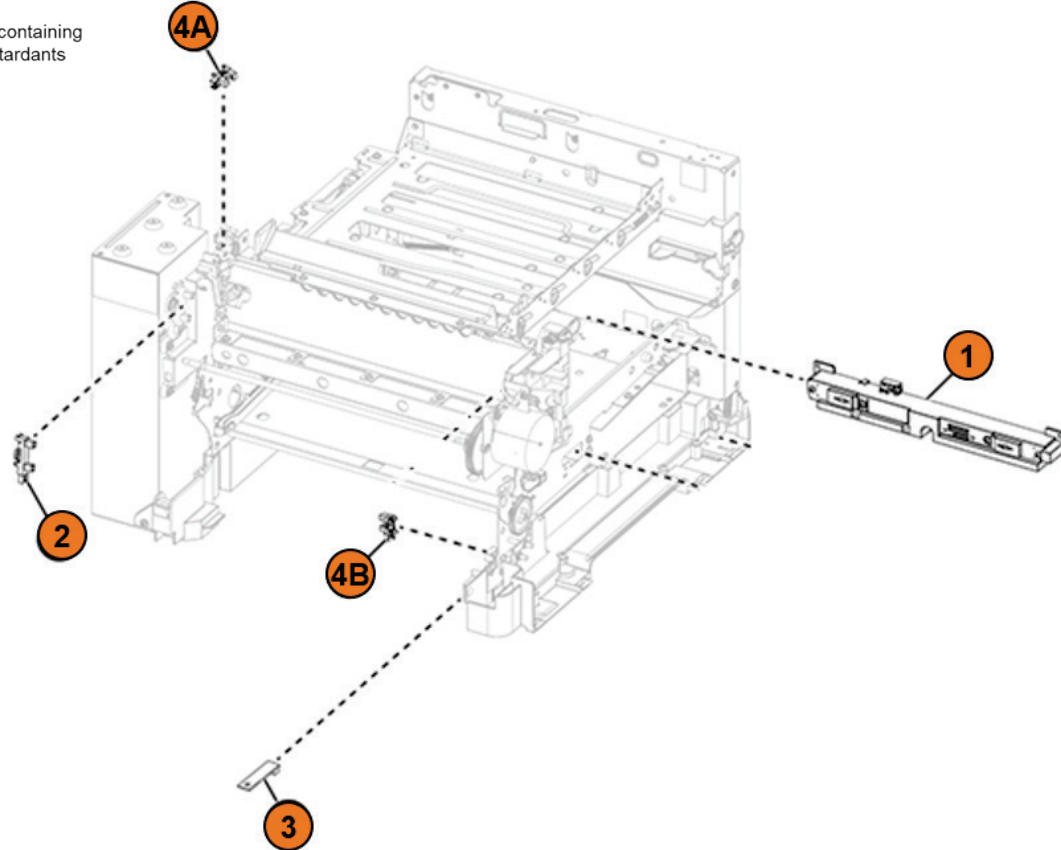
**Table Component Count** (without options)

LCD>100cm<sup>2</sup> = 0  
 PCBs>10cm<sup>2</sup> = 2  
 BFR Plastics = 3  
 Battery = 0



## Section 10: Sensors

- LCD > 100 cm<sup>2</sup>
- PCBs > 10 cm<sup>2</sup>
- Printer components containing Brominated flame retardants
- Battery



**Figure 10.1:** Sensors

**Table 10:** Sensors - Printed Circuit Boards >10cm<sup>2</sup> and Plastic with Brominated flame retardants

Item	Description
<b>1</b>	Sensor (toner patch)
<b>2</b>	Sensor (fuser exit)
<b>3</b>	Weather station
<b>4A</b>	Photo sensors: Sensors (duplex)
<b>4B</b>	Sensors (narrow media/bin full)

**Table Component Count** (*without options*)

LCD>100cm<sup>2</sup> = 0  
 PCBs>10cm<sup>2</sup> = 0  
 BFR Plastics = 5  
 Battery = 0

**Section 11: For Reference Only (Customer Replaceable Paper handling devices)**

- LCD > 100 cm<sup>2</sup>
- PCBs > 10 cm<sup>2</sup>
- Printer components containing Brominated flame retardants
- Battery



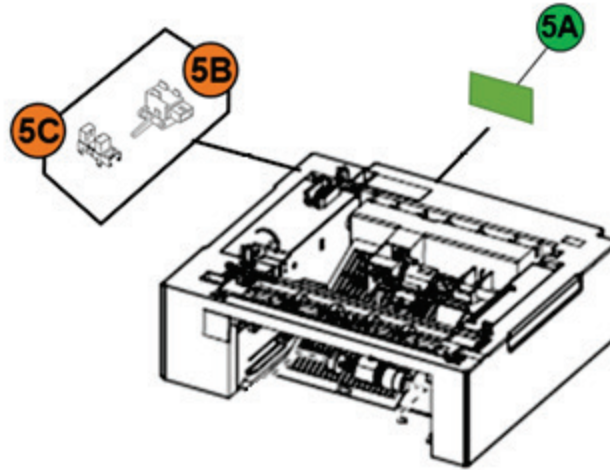
**Figure 11.1:** Customer Replaceable Paper Handling Devices

<b>Table 11:</b> For Reference Only (Customer Replaceable Paper Handling Devices)	
<b>Item</b>	<b>Description</b>
<b>1</b>	650-sheet duo tray
<b>2</b>	550-sheet tray
<b>3</b>	Adjustable printer stand*
<b>4</b>	Swivel cabinet*

Options marked with (\*) are non-Electrical and electronic units

## Section 12: 550/650 Handling Options

- LCD > 100 cm<sup>2</sup>
- PCBs > 10 cm<sup>2</sup>
- Printer components containing Brominated flame retardants
- Battery



**Figure 12.1:** 550/650 Paper Handling Options

**Table 12:** 250/550 Paper Handling Options - Printed Circuit Boards >10cm<sup>2</sup> and Plastic with Brominated flame retardants

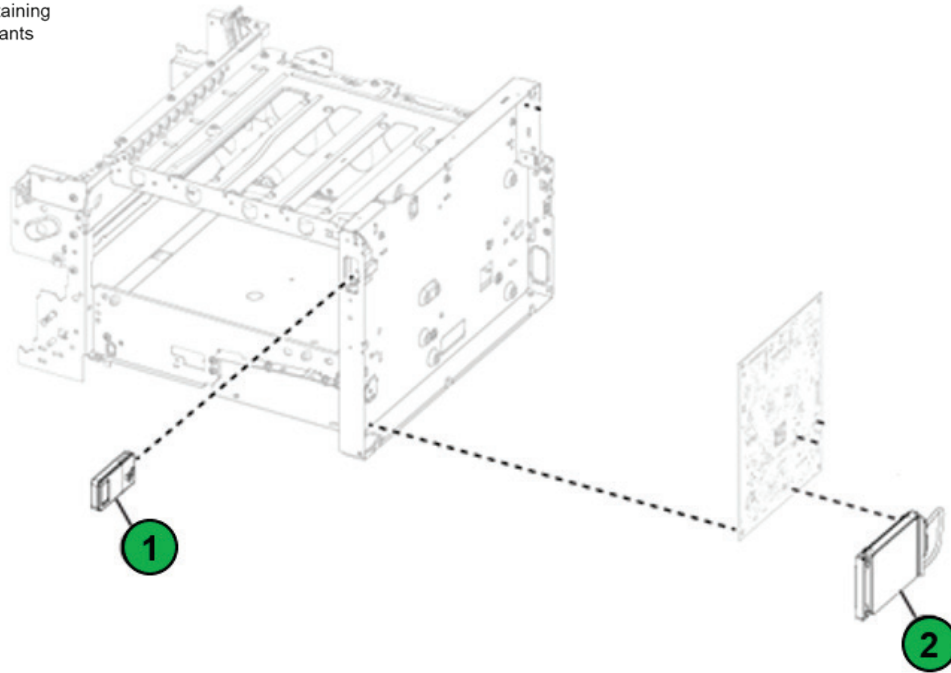
Item	Description
5A	PHO card
5B	Sensor – Staging within the assembly
5C	Sensor – PHOTOINTERRUPTER within the assembly

**Table Component Count** (*without options*)

LCD>100cm<sup>2</sup> = 0  
 PCBs>10cm<sup>2</sup> = 1  
 BFR Plastics = 2  
 Battery = 0

## Section 13: Electronic options

- LCD > 100 cm<sup>2</sup>
- PCBs > 10 cm<sup>2</sup>
- Printer components containing Brominated flame retardants
- Battery



**Figure 13.1:** Electronic options

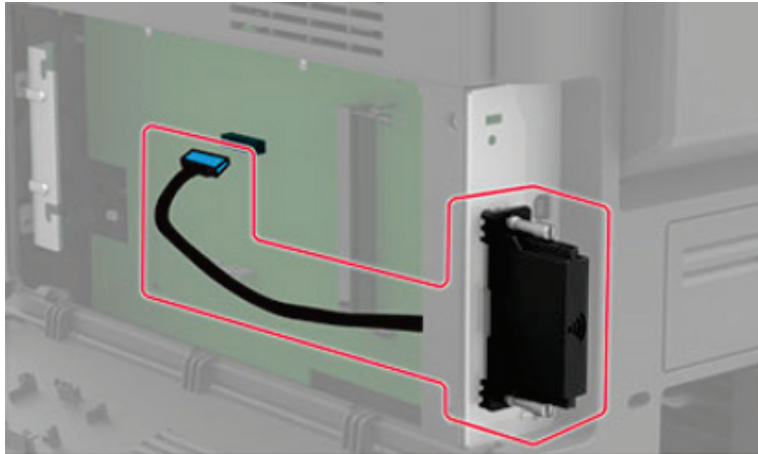
**Table 13:** 250/550 Paper Handling Options - Printed Circuit Boards >10cm<sup>2</sup> and Plastic with Brominated flame retardants

Item	Description
1	Wireless card (optional)
2	Hard drive (optional)

**Table Component Count** (*without options*)

LCD>100cm<sup>2</sup> = 0  
 PCBs>10cm<sup>2</sup> = 0  
 BFR Plastics = 0  
 Battery = 0

## **Section 14: For Reference Only (Customer Replaceable External Card Options)**



### **External Print Servers<sup>2</sup>**

**Note 1:** Illustration shows actual options and their typical locations and mounting at the front side of the printer. However, this does not show the actual printer model.

**Note 2:** Illustration shows actual options and their typical locations and mounting at the rear side of the printer. However, this does not show the actual printer model.

**Annex A** – Printer components with Brominated<sup>S</sup> Flame Retardants

Item	Description	Parts Marking	Qty	CS53x	CS63x	Location
1	HOUSING-HEATER AC CONNECTOR	PBT-GF15 FR(17)	1	X	X	<a href="#">EP Components</a>
2	GUIDE - INNER EXIT	PET-(GF+MD)40 FR(17)	1	X	X	<a href="#">EP Components</a>
3	GUIDE – OUTER EXIT	PET-(GF+MD)40 FR(17)	1	X	X	<a href="#">EP Components</a>
4	GUIDE – DUPLEX	PET-(GF+MD)40 FR(17)	1	X	X	<a href="#">EP Components</a>
5	GUIDE – ENTRY	PET-(GF+MD)40 FR(17)	1	X	X	<a href="#">EP Components</a>
6	Printhead tape	N/A	1	X	X	<a href="#">EP Components</a>
7	Sensor(Photo)	N/A	1	X	X	<a href="#">EP Components</a>
8	Sensor (Thermistor)	N/A	2	X	X	<a href="#">EP Components</a>
9	Fan	N/A	1	X	X	<a href="#">Motors</a>
10	Sensor (Photo)	N/A	1	X	X	<a href="#">Motors</a>
11	Sensor ( Staging)	N/A	1	X	X	<a href="#">Motors</a>
12	Sensor (toner patch)	N/A	1	X	X	<a href="#">Sensors</a>
13	Sensor ( fuser exit)	N/A	1	X	X	<a href="#">Sensors</a>
14	Weather station	N/A	1	X	X	<a href="#">Sensors</a>
15	Photo sensors	N/A	2	X	X	<a href="#">Sensors</a>
16	Sensor – Staging	N/A	1	Optional	Optional	<a href="#">550/ 650 option tray</a>
17	Sensor – PHOTOINTERRUPTER	N/A	1	Optional	Optional	<a href="#">550/ 650 option tray</a>
<b>Minimum Count (without options) =</b>			<b>17</b>			

**Annex B** – Printed Circuit Boards >10cm<sup>2</sup>

Item	Description	Qty	CS53x	CS63x	Location
1A	2.4-in Control panel display assembly UICC board	1	X		<a href="#">Control panel</a>
1B	4.3-in Control panel display assembly UICC board	1		X	
2	Printhead motor driver PCBA	1	X	X	<a href="#">EP components</a>
3	Printhead Motor PCBA	1	X	X	<a href="#">EP components</a>
4	Printhead Laser driver PCBA	1	X	X	<a href="#">EP components</a>
5	Engine board	1	X	X	<a href="#">Electronics</a>
6	Controller board	1	X	X	<a href="#">Electronics</a>
7	Toner meter card	1	X	X	<a href="#">Electronics</a>
8	HVPS	1	X	X	<a href="#">Electronics</a>
9	LVPS	1	X	X	<a href="#">Electronics</a>
10	EP drive motors	2	X	X	<a href="#">Motors</a>
11	550 or 650 PHO card	1	Optional	Optional	<a href="#">550/650 Handling Options</a>
12	Wireless card (optional)	1	Optional	Optional	<a href="#">Electronic options</a>
13	Hard drive (optional)	1	Optional	Optional	<a href="#">Electronic options</a>
<b>Minimum Count (without options) =</b>		<b>12</b>			

**Annex C** – Electrical and Electronic (EE) Customer Replaceable Paper handling devices

Item	PN	Description	C2335, CS53x, CS63x	Locations
1	42C7650	650-sheet duo tray	X	<a href="#">Paper handling devices</a>
2	42C7550	550-sheet tray		

**Annex D** – Electrical and Electronic (EE) Customer Replaceable Internal/ External Card Options

Item	PN	Description	C2335, CS53x, CS63x	Locations
1	27X6410	Wireless	X	<a href="#">Attached to Controller board</a>
2	57X9801	Hard drive	X	