

Bring AI to your business operations with scalable, end-to-end edge computing

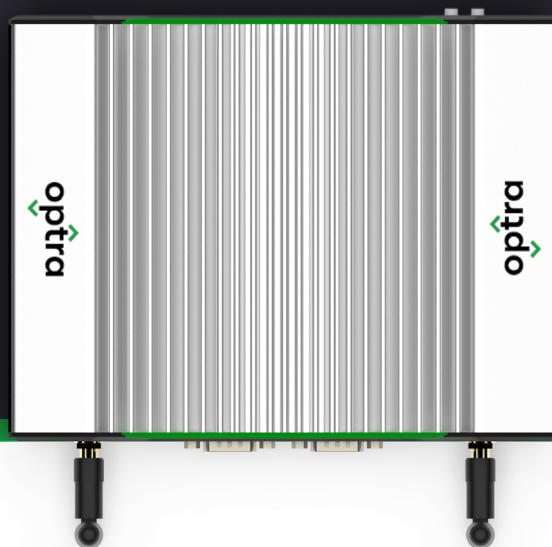
Securely deploy edge AI applications at scale with Optra Edge – a first of its kind integrated hardware and software platform



Lexmark™

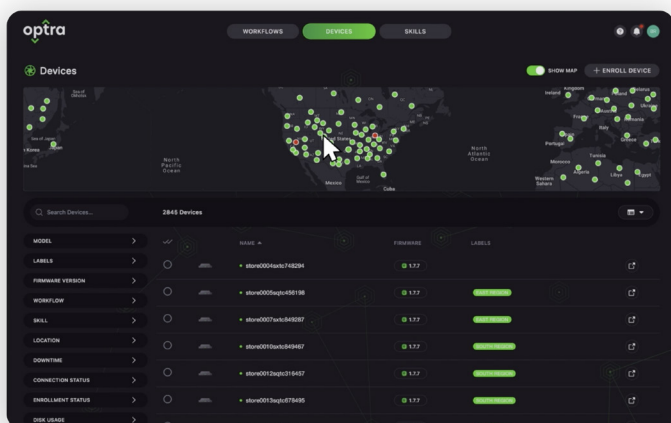


Optra Edge VZ5100 Edge Processor



Master your fleet with the Optra Edge Device Management Portal

Provision and monitor your hardware and software right from your fingertips using our secure portal. See what's happening in real-time, wherever your applications and devices are deployed.



Transform your cameras into intelligent systems, simplify AI integration and bring applications from the cloud to the real world with **Optra Edge VZ5100**, powered by NVIDIA® Jetson Orin Nano™.

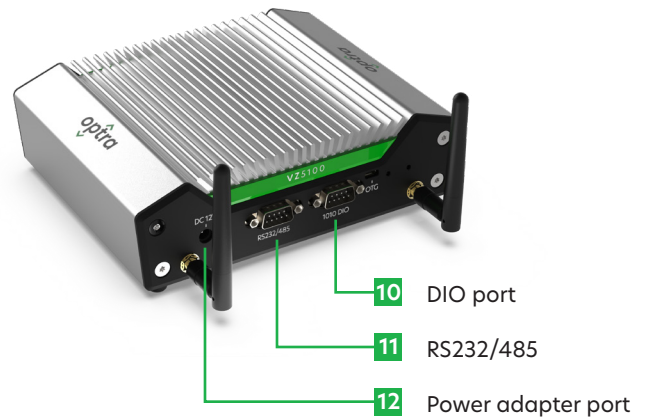
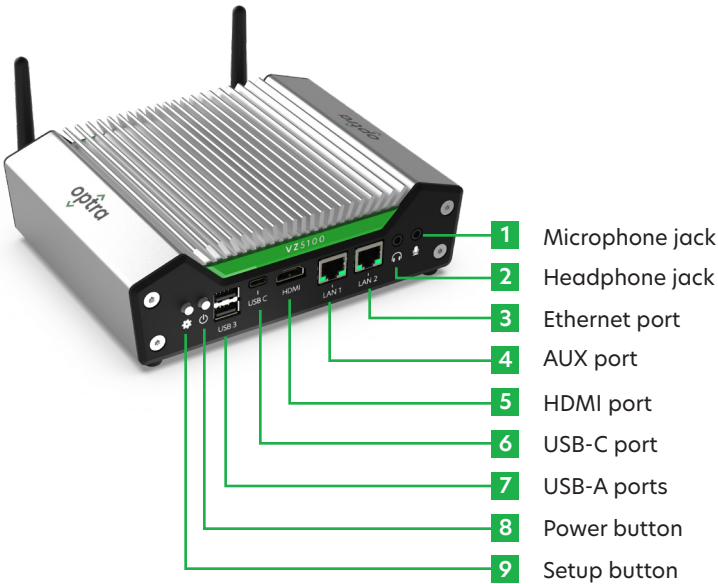
One portal, infinite possibilities

- ▶ Control AI deployments with Lexmark Optra Edge processors
- ▶ Manage all applications and installations remotely, including:
 - ▶ Security patches
 - ▶ AI model updates and deployments
 - ▶ Device status, data logs and usage
- ▶ Gain visibility into your remote operations
- ▶ Integrate data with our IoT platform or other systems-of-record for advanced analytics



Partner

View your business through the Optra lens



Product	
Model	VZ5100
Part Number	77D1260
List price (per unit)	\$1,599 USD
Performance	
Processor	NVIDIA Jetson Orin Nano
Storage	512GB (M.2 NVME)
Memory	8GB (128 bit)
AI Performance	67 TOPS
Security	
Trusted Platform Module (TPM)	Yes
Secure boot	Yes
OS update	Yes
Connectivity	
Local Area Network (LAN)	2 x 10/100/1000 Mbps
Wireless Local Area Network (WLAN)	Wi-Fi 5 (2.4Ghz & 5Ghz)
Personal Area Network (PAN)	2 x 2 Bluetooth Low Energy (BLE)
Local Ports	2 x USB-A (3.2) 1 x USB-C
Audio input	1 x internal microphone 1 x 3.5mm connector (headphone/mic)
Audio output	1 x 3.5mm connector
Video output	1 x HDMI 2.0 (4K out)
General Purpose Input/Output (GPIO)	1 x DB9 (RS-232/RS-485) 1 x DB9 (7 DIO)
External storage	None
Antennas	2 x RP-SMA

Environment	
Operating temperature	-4F (-20C) to 140F (60C)
Operating humidity	95% @ 104F(40C) - non-condensing
Storage temperature	-40F (-40C) to 140F (60C)
Cooling	Passive
Power	
Power supply	60W external
Input voltage	12V to 19V
Certifications	
Certifications	CB, CE, UL, FCC
Software	
Docker containers	20.10.25-ce
Compatible base container images	<ul style="list-style-type: none"> nvcr.io/nvidia/deepstream-l4t:6.2-base nvcr.io/nvidia/l4t-pytorch:r35.2.1-pt2.0-py3 nvcr.io/nvidia/l4t-tensorflow:r35.3.1-tf2.11-py3 nvcr.io/nvidia/l4t-ml:r35.2.1-py3
System OS	Jetson Linux 35.5.0 Poky Linux (Kirkstone)
NVIDIA L4T compatibility	Jetson Linux 35.5.0
Packaging	
Dimensions (without antennas)	7.2" x 5.9" x 2.3" (183 x 150 x 59mm)
Weight	3.3 lbs (1.51kg)
Box Contents	1 x Optra Edge device 2 x antennas 1 x power supply 1 x publications 1 x wall mount