



# Lexmark CS730de

Designed for security, ease of use and sustainability, the Lexmark CS730de delivers professional colour for mid-to-large workgroups at speeds of up to 40 pages per minute\*.

## Part Number

47C9020

## Print Technology

Colour Laser

## Function

Colour Printing, Trusted Platform Module (TPM), The Trusted Platform Module (TPM) is not available in some countries.

## Workgroup Size

Medium-Large Workgroup

## Touch Screen Display

Yes

## Display

Lexmark e-Task 10.9 cm (4.3-inch) colour touch screen

## Print Speed (A4, Black)

Do 40 ppm<sup>6</sup>

## Print Speed (A4, Colour)

Do 40 ppm<sup>6</sup>

## Print Speed (A4, Black) Duplex

Do 30.5 spm<sup>6</sup>

## Time to First Page (Black) As fast as

Za samo 6.4 seconds

## Time to First Page (Colour) As fast as

Za samo 7.0 seconds

## Duplex (2-sided) Printing

Integrated Duplex

## Print Resolution, Black

1200 x 1200 dpi, 4800 CQ (2400 x 600 dpi)

## Print Resolution, Colour

1200 x 1200 dpi, 4800 CQ (2400 x 600 dpi)

## Processor Speed

Quad Core, 1.2 GHz

## Memory, Standard

1024 MB

## Memory, Maximum

1024 MB

## Hard Disk

Intelligent Storage Drive (optional); Magnetic Hard Disk (optional)

## Apple Operating Systems Supported

Support is provided through AirPrint and AirScan only

## Citrix MetaFrame

Microsoft Windows Server 2012 R2 Datacenter Edition running Citrix XenApp 7.5, 6, 7, 8, 9, 11, 12, 13, 14, 15, 16, Microsoft Windows Server 2012 Datacenter Edition running Citrix XenApp 7.5, 6, 7, 8, 9, 11, 12, 13, 14, 15, 16, Microsoft Windows Server 2012 Foundation running Citrix XenApp 6.0, 6.5, Microsoft Windows Server 2012 Essentials running Citrix XenApp 6.0, 6.5, Microsoft Windows Server 2012 Standard running Citrix XenApp 6.0, 6.5

## Linux Operating Systems Supported

Ubuntu 20.04, Debian 10, SUSE Linux Enterprise Server 12 SP5, OpenSUSE 15.2, Debian 11, Ubuntu 22.04, Fedora 36, Fedora 37, SUSE Linux Enterprise Server 15 SP4, OpenSUSE 15.4, Red Hat Linux 8.7, Red Hat Linux 9.1

## Microsoft Windows Operating Systems Supported

Windows 7, Windows 7 x64, Windows 8, Windows 8 x64, Windows Server 2012, Windows Server 2012 R2, Windows RT, Windows 10, Windows Server 2016, Windows Server 2019, Windows Server 2022, Windows 11

## Novell Operating Systems Supported

Novell NetWare 6.5 Open Enterprise Server, Novell Open Enterprise Server 2 on SUSE Linux Enterprise Server 10 SP4, Novell Open Enterprise Server 11 (SP3) on SuSE Linux Enterprise Server 11 SP4 (x86 and x64), Novell Open Enterprise Server 11 (SP3) on SuSE Linux Enterprise Server 12 SP1 (x86 and x64), Novell Open Enterprise Server 15 (SP1) on SuSE Linux Enterprise Server 11 SP4 (x86 and x64)

## Included Paper Handling

550-Sheet Input, 100-Sheet Multipurpose Feeder, Integrated Duplex, 300-Sheet Output Bin

## Optional Paper Handling

550-Sheet Tray

## Paper Input Capacity, Standard

Do 650 pages 75 gsm bond

## Paper Input Capacity, Maximum

Do 2850 pages 75 gsm bond

## Paper Output Capacity, Standard

Do 300 pages 75 gsm bond

## Paper Output Capacity, Maximum

Do 300 pages 75 gsm bond

## Paper Weight Range Supported - Standard Tray (gsm)

60 - 218 gsm

## Paper Weight Range Supported - Multipurpose Feeder (gsm)

60 - 218 gsm

## Finishing Option

No

## Number of Paper Inputs, Standard

2

## Number of Paper Inputs, Maximum

6

## Media Types Supported

Card Stock, Envelopes, Paper Labels, Plain Paper, Vinyl Labels, Banner Paper, Refer to the Paper & Specialty Media Guide

## Media Sizes Supported

10 Envelope, 7 3/4 Envelope, 9 Envelope, A4, A5, B5 Envelope, C5 Envelope, DL Envelope, Executive, Folio, JIS-B5, Legal, Letter, Statement, Universal, Oficio, A6

## Caster Base

No

## Standard Connectivity

One Internal Card Slot, USB 2.0 Specification Hi-Speed Certified (Type B), Gigabit Ethernet (10/100/1000), Front USB 2.0 Specification Hi-Speed Certified port (Type A), Rear Hi-Speed USB port Compatible with USB 2.0 Specification (Type A)

## Optional Network Ports

Internal MarkNet N8370 802.11b/g/n/a Wireless, NFC

## Direct USB

Yes

## Ethernet Network

Yes

## Wireless

Wireless Option

## Network Protocol Support

TCP/IP IPv4, TCP/IP IPv6, TCP, UDP, IPSEC w/ IPv4, IPSEC w/ IPv6, ICMP, IGMP

## Network Printing Methods

LPR/LPD, Direct IP (Port 9100), Enhanced IP (Port 9400), Secure IP (Port 96xx), FTP, ThinPrint .print integration, IPP 1.0, 1.1, 2.0 (Internet Printing Protocol), Microsoft Web Services WSD, Pull Printing

## Network Management Protocols<sup>1</sup>

HTTP, HTTPs (SSL/TLS), SNMPv1, SNMPv2c, SNMPv3, WINS, IGMP, BOOTP, RARP, APIPA (AutolP), DHCP, ICMP, DNS, DDNS, mDNS, ARP, NTP, Telnet, Finger,

## Network Security

SNMPv3, 802.1x Authentication: MD5, MSCHAPv2, LEAP, PEAP, TLS, TTLS, Certificate Management, SSL Cipher Configuration, TCP/UDP Port Access Control, Security Port Lockdown, IPSEC Support (IPv4/IPv6)

## Printable Area (metric)

4.2 mm of the top, bottom, right and left edges (within)

## Printer Languages (Standard)

PCL 6 Emulation, Personal Printer Data Stream (PPDS), PostScript 3 Emulation, Direct Image, PDF 1.7 emulation, PCL 5

## Fonts and Symbol Sets

158 scalable PostScript fonts, 39 scalable PPDS fonts, 5 PPDS bitmap fonts, For more information, refer to the Technical Reference., 89 scalable PCL 6 fonts, 2 PCL 6 bitmap fonts

## Laser Cartridge Yields (up to)<sup>5</sup>

, 22,000-page Black High Yield Cartridge, 10,500-page Colour (CMY) High Yield Cartridges

**Imaging Unit Estimated Yield**

Do 150000 pages, based on 5 average letter/A4 size pages per print job and ~ 5% coverage for CS/CX96x, CX83x, CX95x, and MX95x printer series, or based on 3 average letter/A4 size pages per print job and ~ 5% coverage for all other printers<sup>4</sup>

**Cartridge(s) Shipping with Product**

5,000-page Black and Colour (CMYK) Return Programme Toner Cartridges

**Replacement Cartridges:**

Product functions only with replacement cartridges designed for use in a specific geographical region. See [www.lexmark.com/](http://www.lexmark.com/) regions for more details.

**Packaged Size (mm - H x W x D)**

567 x 625 x 720 mm

**Packaged Weight, kg**

38.5 kg

**Size (mm - H x W x D)**

413 x 479 x 489 mm

**Weight**

32 kg

**Noise level (Idle mode)**

14 dBA

**Noise Level (Print), Operating**

52 dBA

**Duplex Print Noise Level, Operating**

53 dBA

**Quiet Mode**

47 dBA

**ENERGY STAR**

Yes

**Average Power (Hibernate Mode)**

0.1 watts

**Average Power (Sleep Mode)**

1 watts

**Average Power (Ready Mode)**

57 watts

**Average Power (Printing)**

610 watts

**Average Power while Printing Duplex**

510 watts

**ENERGY STAR Typical Electricity****Consumption (TEC)**

0.53 kilowatt-hours per week

**Product Guarantee**

1-Year Onsite Repair, Next Business Day

**Product Certifications**

ENERGY STAR, ICES-003 Class A, BSMI Class A, VCCI Class A, FCC Class A, NOM-032, UL, cUL, NOM, US FDA/CDRH, IEC 60825-1, CB Report, ISO-532B, CE (EU) DoC, EFTA (CE), KC logo, CCC, C-tick DoC, EuP, CECP, CEL, EC 1275/2008, ECMA-370, TED, SII, TER, SABS, UL-AR, GS Mark, Green Dot, ISO-9296, COC, EPEAT, China Green Product (CGP), Mopria Certified, Blue Angel / RAL-UZ 219

**Maximum Monthly Duty Cycle**

Do 120000 pages per month<sup>3</sup>

**Recommended Monthly Page Volume**

1500 - 15000 pages<sup>2</sup>

**Specified Operating Environment**

Humidity: 15 to 80% Relative Humidity,  
Temperature: 10 to 32°C (50 to 90°F), Altitude:  
0 - 2896 Metres (9,500 Feet)

**License/Agreement Terms**

Printers are sold subject to certain license/ agreement conditions. See [www.lexmark.com/](http://www.lexmark.com/) printerlicense for details.

**Country of Origin**

China (PRC), Mexico

**UNSPSC Code**

43212105

<sup>1</sup>This product includes software developed by the OpenSSL Project for use in the OpenSSL Toolkit. (<http://www.openssl.org/>)

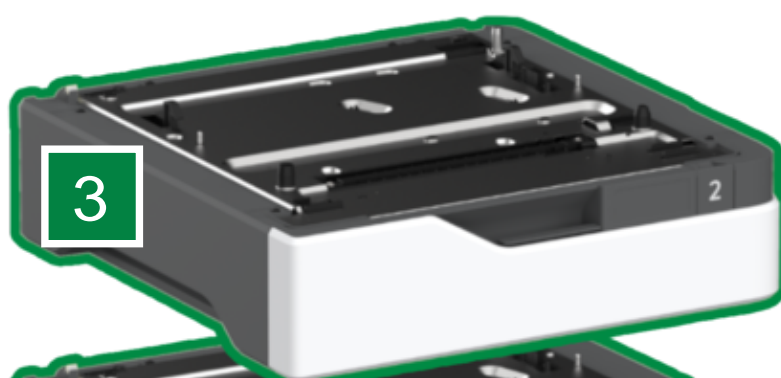
<sup>2</sup>"Recommended Monthly Page Volume" is a range of pages that helps customers evaluate Lexmark's product offerings based on the average number of pages customers plan to print on the device each month. Lexmark recommends that the number of pages per month be within the stated range for optimum device performance, based on factors including: supplies replacement intervals, paper loading intervals, speed, and typical customer usage.

<sup>3</sup>"Maximum Monthly Duty Cycle" is defined as the maximum number of pages a device could deliver in a month using a multishift operation. This metric provides a comparison of robustness in relation to other Lexmark printers and MFPs.

<sup>4</sup>Actual Yield may vary based on other factors such as device speed, paper size and feed orientation, toner coverage, tray source, percentage of black-only printing and average print job complexity.

<sup>5</sup>Average continuous black or continuous composite CMY declared cartridge yield up to this number of standard pages in accordance with ISO/IEC 19798.

<sup>6</sup>Print and copy speeds measured in accordance with ISO/IEC 24734 and ISO/IEC 24735 respectively (ESAT). For more information see: [www.lexmark.com/ISOspeeds](http://www.lexmark.com/ISOspeeds).



P/N	Kertridži sa tonerom	P/N	Produžene garancije
71C0Z10	Lexmark CS/CX730, 735, C/XC4342, C/XC4352 Black 150K Imaging Unit	2372750	CS730 2-Year Renewal Onsite Repair, Response Time Next Business Day
71C0Z50	Lexmark CS/CX730, 735, C/XC4342, C/XC4352 Colour (CMY) 150K Imaging Unit	2372751	CS730 3-Year Renewal Onsite Repair, Response Time Next Business Day
71C0W00	Lexmark CS/CX730, 735, C/XC4342, C4352 170K Waste Container	2372752	CS730 4-Year Renewal Onsite Repair, Response Time Next Business Day
71C0H20	Lexmark CS/CX730 Cyan 10.5K Toner Cartridge	2372753	CS730 1-Year Post Warranty Onsite Repair Next Business Day
71C0H30	Lexmark CS/CX730 Magenta 10.5K Toner Cartridge	2372768	CS730 1-Year Parts Only Extended Warranty
71C0H40	Lexmark CS/CX730 Yellow 10.5K Toner Cartridge	2372769	CS730 2-Year Parts Only Extended Warranty
71C0H10	Lexmark CS730, 735, CX730 Black 22K Toner Cartridge	2372770	CS730 3-Year Parts Only Extended Warranty
71C80C0	Lexmark CS/CX730, 735 Cyan Return Programme 5K Toner Cartridge	2372771	CS730 4-Year Parts Only Extended Warranty
71C80M0	Lexmark CS/CX730, 735 Magenta Return Programme 5K Toner Cartridge	2372772	CS730 5-Year Parts Only Extended Warranty
71C80Y0	Lexmark CS/CX730, 735 Yellow Return Programme 5K Toner Cartridge	2372773	CS730 6-Year Parts Only Extended Warranty
71C80K0	Lexmark CS/CX730, 735 Black Return Programme 5K Toner Cartridge	2372774	CS730 1-Year Renewal Parts Only
71C8HC0	Lexmark CS/CX730 Cyan Return Programme 10.5K Toner Cartridge	2372775	CS730 2-Year Renewal Parts Only
71C8HM0	Lexmark CS/CX730 Magenta Return Programme 10.5K Toner Cartridge	2372776	CS730 3-Year Renewal Parts Only
71C8HY0	Lexmark CS/CX730 Yellow Return Programme 10.5K Toner Cartridge	2372777	CS730 4-Year Renewal Parts Only
71C8HK0	Lexmark CS730, 735, CX730 Black Return Programme 22K Toner Cartridge	2372743P	CS730 1-Year Onsite Repair NBD Warranty

P/N	Manipulisanje papirom
40C2100	550-Sheet Tray

P/N	Nameštaj
40C2300	Adjustable Stand

P/N	Opcije memorije
27X0400	500+ GB Hard Disk
57X9528	Intelligent Storage Drive (ISD)
57X0070	Removable Hard Disk Enclosure Kit

P/N	Rešenja za aplikacije
57X0300	Contact Authentication Device
57X0301	Contactless Authentication Device
82S1204	Bar Code License
82S1203	IPDS License
57X0235	Contactless Front Solutions Module (Primary Choice)
57X0225	Desktop Contactless Reader

P/N	Povezivanje
27X6410	Lexmark MarkNet N8372 802.11 a/b/g/n/ac Wireless Print Server
27X0823	MarkNet N8370 Wireless for CS720, CS725, CX725
1021294	USB (2 Meter) Cable

P/N	Produžene garancije
2372743	CS730 1-Year Onsite Repair NBD Warranty
2372744	CS730 2-Year Onsite Repair NBD Warranty
2372745	CS730 3-Year Onsite Repair NBD Warranty
2372746	CS730 4-Year Onsite Repair NBD Warranty
2372747	CS730 5-Year Onsite Repair NBD Warranty
2372748	CS730 6-Year Onsite Repair NBD Warranty
2372749	CS730 1-Year Renewal Onsite Repair, Response Time Next Business Day