



Lexmark CS730de

Designed for security, ease of use and sustainability, the Lexmark CS730de delivers professional colour for mid-to-large workgroups at speeds of up to 40 pages per minute*.

Part Number

47C9034

Print Technology

Colour Laser

Function

Colour Printing, Trusted Platform Module (TPM), The Trusted Platform Module (TPM) is not available in some countries.

Workgroup Size

Medium-Large Workgroup

Touch Screen Display

Yes

Display

Lexmark e-Task 10.9 cm colour touch screen with audible feedback

Print Speed (A4, Black)

Up to 40 ppm⁶

Print Speed (A4, Colour)

Up to 40 ppm⁶

Print Speed (A4, Black) Duplex

Up to 30.5 spm⁶

Time to First Page (Black)

As fast as 6.4 seconds

Time to First Page (Colour)

As fast as 7.0 seconds

Duplex (2-sided) Printing

Integrated Duplex

Print Resolution, Black

1200 x 1200 dpi, 4800 CQ (2400 x 600 dpi)

Print Resolution, Colour

1200 x 1200 dpi, 4800 CQ (2400 x 600 dpi)

Processor Speed

Quad Core, 1.2 GHz

Memory, Standard

1024 MB

Memory, Maximum

1024 MB

Hard Disk

Intelligent Storage Drive available; Magnetic Hard Disk available

Apple Operating Systems Supported

Support is provided through AirPrint and AirScan only

Citrix MetaFrame

Microsoft Windows 2000 Server running Terminal Services with Citrix Presentation Server 3.0, 4.0, Microsoft Windows Server 2003 running Terminal Services with Citrix Presentation Server 3.0, 4.0, 4.5, Microsoft Windows Server 2003 x64 running Terminal Services with Citrix Presentation Server 4.0 x64, 4.5 x64, Microsoft Windows Server 2003 and 2003 X64 Edition with Citrix XenApp 5.0, Microsoft Windows Server 2008 and 2008 X64 Edition with Citrix XenApp 5.0, Microsoft Windows Server 2008 R2 with Citrix XenApp 6.0, 6.5, Microsoft Windows Server 2012 with Citrix XenApp 6.0, 6.5, Microsoft Windows Server 2012 R2 Datacenter Edition running Citrix XenApp 7.5, 6, 7, 8, 9, 11, 12, 13, 14, 15, 16, Microsoft Windows Server 2012 Datacenter Edition running Citrix XenApp 7.5, 6, 7, 8, 9, 11, 12, 13, 14, 15, 16, Microsoft Windows Server 2008 R2 Datacenter Edition running Citrix XenApp 7.5, 6, 7, 8, 9, 11, 12, 13, 14, 15, 16

Linux Operating Systems Supported

openSUSE Linux 42.3, Fedora 27, 28, 29, Ubuntu 16.04, 18.04 LTS, Debian GNU/Linux 8.11, openSUSE Linux 15, Debian 9.4, Debian GNU/Linux 9.5, Debian GNU/Linux 9.6, Red Hat Linux 7.5, 7.6

Microsoft Windows Operating Systems Supported

Windows XP, Windows XP x64, Windows Vista, Windows Vista x64, Windows Server 2008, Windows Server 2008 x64, Windows 7, Windows 7 x64, Windows Server 2008 R2, Windows 8, Windows 8 x64, Windows Server 2012, Windows 8.1, Windows Server 2012 R2, Windows RT, Windows 10, Windows Server 2016, Windows Server 2019, Windows Server 2022, Windows 11

Novell Operating Systems Supported

Novell NetWare 6.5 Open Enterprise Server, Novell Open Enterprise Server 2 on SUSE Linux Enterprise Server 10 SP4, Novell Open Enterprise Server 11 (SP3) on SuSE Linux Enterprise Server 11 SP4 (x86 and x64), Novell Open Enterprise Server 11 (SP3) on SuSE Linux Enterprise Server 12 SP1 (x86 and x64), Novell Open Enterprise Server 15 (SP1) on SuSE Linux Enterprise Server 11 SP4 (x86 and x64)

Included Paper Handling

550-Sheet Input, 100-Sheet Multipurpose Feeder, Integrated Duplex, 300-Sheet Output Bin

Optional Paper Handling

550-Sheet Tray

Paper Input Capacity, Standard

Up to 650 pages 75 gsm bond

Paper Input Capacity, Maximum

Up to 2850 pages 75 gsm bond

Paper Output Capacity, Standard

Up to 300 pages 75 gsm bond

Paper Output Capacity, Maximum

Up to 300 pages 75 gsm bond

Paper Weight Range Supported - Standard Tray (gsm)

60 - 218 gsm

Paper Weight Range Supported - Multipurpose Feeder (gsm)

60 - 218 gsm

Finishing Option

No

Number of Paper Inputs, Standard

2

Number of Paper Inputs, Maximum

6

Media Types Supported

Card Stock, Envelopes, Paper Labels, Plain Paper, Vinyl Labels, Banner Paper, Refer to the Paper & Specialty Media Guide

Media Sizes Supported

10 Envelope, 7 3/4 Envelope, 9 Envelope, A4, A5, B5 Envelope, C5 Envelope, DL Envelope, Executive, Folio, JIS-B5, Legal, Letter, Statement, Universal, Oficio, A6

Caster Base

No

Standard Ports

One Internal Card Slot, USB 2.0 Specification Hi-Speed Certified (Type B), Gigabit Ethernet (10/100/1000), Front USB 2.0 Specification Hi-Speed Certified port (Type A), Rear Hi-Speed USB port Compatible with USB 2.0 Specification (Type A)

Optional Network Ports

Internal MarkNet N8370 802.11b/g/n/a Wireless, NFC

Direct USB

Yes

Ethernet Network

Yes

Wireless

Wireless Option

Network Protocol Support

TCP/IP IPv4, TCP/IP IPv6, TCP, UDP, IPSEC w/ IPv4, IPSEC w/ IPv6, ICMP, IGMP

Network Printing Methods

LPR/LPD, Direct IP (Port 9100), Enhanced IP (Port 9400), Secure IP (Port 96xx), FTP, ThinPrint .print integration, IPP 1.0, 1.1, 2.0 (Internet Printing Protocol), Microsoft Web Services WSD, Pull Printing

Network Management Protocols¹

HTTP, HTTPS (SSL/TLS), SNMPv1, SNMPv2c, SNMPv3, WINS, IGMP, BOOTP, RARP, APIPA (AutoIP), DHCP, ICMP, DNS, DDNS, mDNS, ARP, NTP, Telnet, Finger,

Network Security

SNMPv3, 802.1x Authentication: MD5, MSCHAPv2, LEAP, PEAP, TLS, TTLS, Certificate Management, SSL Cipher Configuration, TCP/UDP Port Access Control, Security Port Lockdown, IPSEC Support (IPv4/IPv6)

Printable Area (metric)

4.2 mm of the top, bottom, right and left edges (within)

Printer Languages (Standard)

PCL 6 Emulation, Personal Printer Data Stream (PPDS), PostScript 3 Emulation, Direct Image, PDF 1.7 emulation, PCL 5

Fonts and Symbol Sets

158 scalable PostScript fonts, 39 scalable PPDS fonts, 5 PPDS bitmap fonts, For more information, refer to the Technical Reference., 89 scalable PCL 6 fonts, 2 PCL 6 bitmap fonts

Laser Cartridge Yields (up to)⁵

, 22,000-page Black High Yield Cartridge, 10,500-page Colour (CMY) High Yield Cartridges

Imaging Unit Estimated Yield

Up to 150000 pages, based on 3 average letter/A4-size pages per print job and ~ 5% coverage⁴

Cartridge(s) Shipping with Product

5,000-page Black and Colour (CMYK) Return Programme Toner Cartridges

Replacement Cartridges:

Product functions only with replacement cartridges designed for use in a specific geographical region. See www.lexmark.com/ regions for more details.

Packaged Size (mm - H x W x D)

567 x 625 x 720 mm

Packaged Weight, kg

38.5 kg

Size (mm - H x W x D)

413 x 479 x 489 mm

Weight

32 kg

Noise Level, Idle

14 dBA

Noise Level (Print), Operating

52 dBA

Duplex Print Noise Level, Operating

53 dBA

Quiet Mode

47 dBA

ENERGY STAR

Yes

Average Power (Hibernate Mode)

0.1 watts

Average Power (Sleep Mode)

1 watts

Average Power (Ready Mode)

57 watts

Average Power (Printing)

610 watts

Average Power while Printing Duplex

510 watts

ENERGY STAR Typical Electricity**Consumption (TEC)**

0.53 kilowatt-hours per week

Product Warranty

1-Year Onsite Repair, Next Business Day

Product Certifications

ENERGY STAR, ICES-003 Class A, BSMI Class A, VCCI Class A, FCC Class A, NOM-032, UL, cUL, NOM, US FDA/CDRH, IEC 60825-1, CB Report, ISO-532B, CE (EU) DoC, EFTA (CE), KC logo, CCC, C-tick DoC, EuP, CECP, CEL, EC 1275/2008, ECMA-370, TED, SIL, TER, SABS, UL-AR, GS Mark, Green Dot, ISO-9296, COC, EPEAT, China Green Product (CGP), Mopria Certified

Maximum Monthly Duty Cycle

Up to 120000 pages per month³

Recommended Monthly Page Volume

1500 - 15000 pages²

Specified Operating Environment

Humidity: 15 to 80% Relative Humidity, Temperature: 10 to 32°C (50 to 90°F), Altitude: 0 - 2896 metres

License/Agreement Terms

Printers are sold subject to certain license/agreement conditions. See www.lexmark.com/ printerlicense for details.

Country of Origin

China (PRC), Mexico

UNSPSC Code

43212105

¹This product includes software developed by the OpenSSL Project for use in the OpenSSL Toolkit. (<http://www.openssl.org/>)

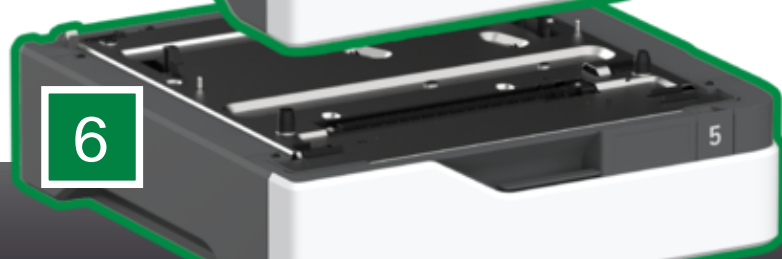
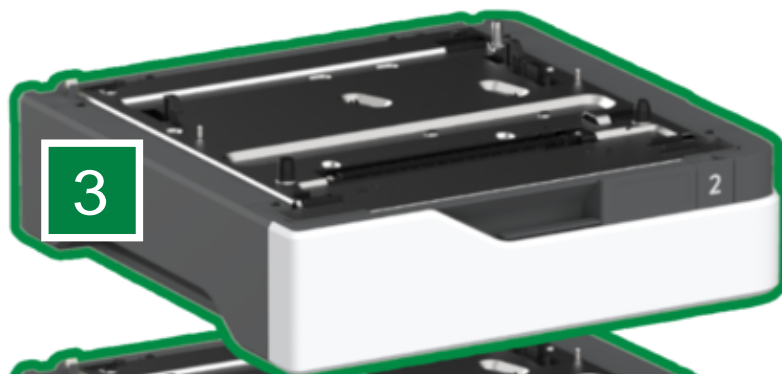
²"Recommended Monthly Page Volume" is a range of pages that helps customers evaluate Lexmark's product offerings based on the average number of pages customers plan to print on the device each month. Lexmark recommends that the number of pages per month be within the stated range for optimum device performance, based on factors including: supplies replacement intervals, paper loading intervals, speed, and typical customer usage.

³"Maximum Monthly Duty Cycle" is defined as the maximum number of pages a device could deliver in a month using a multishift operation. This metric provides a comparison of robustness in relation to other Lexmark printers and MFPs.

⁴Actual Yield may vary based on other factors such as device speed, paper size and feed orientation, toner coverage, tray source, percentage of black-only printing and average print job complexity.

⁵Average continuous black or continuous composite CMY declared cartridge yield up to this number of standard pages in accordance with ISO/IEC 19798.

⁶Print and copy speeds measured in accordance with ISO/IEC 24734 and ISO/IEC 24735 respectively (ESAT). For more information see: www.lexmark.com/ISOspeeds.



P/N	Toner Cartridges	P/N	Extended Warranties
71C0Z10	Lexmark CS/CX730, 735, C/XC4342, C/XC4352 Black 150K Imaging Unit	2372750	CS730 2-Year Renewal Onsite Repair, Response Time Next Business Day
71C0Z50	Lexmark CS/CX730, 735, C/XC4342, C/XC4352 Colour (CMY) 150K Imaging Unit	2372751	CS730 3-Year Renewal Onsite Repair, Response Time Next Business Day
71C0W00	Lexmark CS/CX730, 735, C/XC4342, C4352 170K Waste Container	2372752	CS730 4-Year Renewal Onsite Repair, Response Time Next Business Day
71C0H20	Lexmark CS/CX730 Cyan 10.5K Toner Cartridge		
71C0H30	Lexmark CS/CX730 Magenta 10.5K Toner Cartridge	2372753	CS730 1-Year Post Warranty Onsite Repair Next Business Day
71C0H40	Lexmark CS/CX730 Yellow 10.5K Toner Cartridge	2372754	CS730 Per Call Onsite Repair Next Business Day Warranty
71C0H10	Lexmark CS730, 735, CX730 Black 22K Toner Cartridge		
71C80C0	Lexmark CS/CX730, 735 Cyan Return Programme 5K Toner Cartridge		
71C80M0	Lexmark CS/CX730, 735 Magenta Return Programme 5K Toner Cartridge		
71C80Y0	Lexmark CS/CX730, 735 Yellow Return Programme 5K Toner Cartridge		
71C80K0	Lexmark CS/CX730, 735 Black Return Programme 5K Toner Cartridge		
71C8HC0	Lexmark CS/CX730 Cyan Return Programme 10.5K Toner Cartridge		
71C8HM0	Lexmark CS/CX730 Magenta Return Programme 10.5K Toner Cartridge		
71C8HY0	Lexmark CS/CX730 Yellow Return Programme 10.5K Toner Cartridge		
71C8HK0	Lexmark CS730, 735, CX730 Black Return Programme 22K Toner Cartridge		

P/N	Paper Handling
40C2100	550-Sheet Tray

P/N	Furniture
40C2300	Adjustable Stand

P/N	Memory Options
27X0400	500+ GB Hard Disk
57X9528	Intelligent Storage Drive (ISD)

P/N	Application Solutions
57X0300	Contact Authentication Device
57X0301	Contactless Authentication Device
82S1204	Bar Code License
82S1203	IPDS License
57X0235	Contactless Front Solutions Module (Primary Choice)
57X0225	Desktop Contactless Reader

P/N	Connectivity
27X6410	Lexmark MarkNet N8372 802.11 a/b/g/n/ac Wireless Print Server
27X0823	MarkNet N8370 Wireless for CS720, CS725, CX725
1021294	USB (2 Meter) Cable
SPD0002	Surge Protective Device, 220-240V

P/N	Extended Warranties
2372743	CS730 1-Year Onsite Repair NBD Warranty
2372744	CS730 2-Year Onsite Repair NBD Warranty
2372745	CS730 3-Year Onsite Repair NBD Warranty
2372746	CS730 4-Year Onsite Repair NBD Warranty
2372747	CS730 5-Year Onsite Repair NBD Warranty
2372748	CS730 6-Year Onsite Repair NBD Warranty
2372749	CS730 1-Year Renewal Onsite Repair, Response Time Next Business Day