



Lexmark CS735de

Designed for security, ease of use and sustainability, the Lexmark CS735de delivers professional colour for mid-to-large workgroups at speeds of up to 50 pages per minute*.

Part Number

47C9120

Print Technology

Colour Laser

Function

Colour Printing, Trusted Platform Module (TPM), The Trusted Platform Module (TPM) is not available in some countries.

Workgroup Size

Medium-Large Workgroup

Touch Screen Display

Yes

Display

Lexmark e-Task 10.9 cm (4.3-inch) colour touch screen

Print Speed (A4, Black)

Do 50 ppm⁶

Print Speed (A4, Colour)

Do 50 ppm⁶

Print Speed (A4, Black) Duplex

Do 38 spm⁶

Time to First Page (Black) As fast as

Za samo 5.6 seconds

Time to First Page (Colour) As fast as

Za samo 6.1 seconds

Duplex (2-sided) Printing

Integrated Duplex

Print Resolution, Black

1200 x 1200 dpi, 4800 CQ (2400 x 600 dpi)

Print Resolution, Colour

1200 x 1200 dpi, 4800 CQ (2400 x 600 dpi)

Processor Speed

Quad Core, 1.2 GHz

Memory, Standard

1024 MB

Memory, Maximum

1024 MB

Hard Disk

Intelligent Storage Drive (optional); Magnetic Hard Disk (optional)

Apple Operating Systems Supported

Support is provided through AirPrint and AirScan only

Citrix MetaFrame

Microsoft Windows Server 2012 R2 Datacenter Edition running Citrix XenApp 7.5, 6, 7, 8, 9, 11, 12, 13, 14, 15, 16, Microsoft Windows Server 2012 Datacenter Edition running Citrix XenApp 7.5, 6, 7, 8, 9, 11, 12, 13, 14, 15, 16, Microsoft Windows Server 2012 Foundation running Citrix XenApp 6.0, 6.5, Microsoft Windows Server 2012 Essentials running Citrix XenApp 6.0, 6.5, Microsoft Windows Server 2012 Standard running Citrix XenApp 6.0, 6.5

Linux Operating Systems Supported

Ubuntu 20.04, Debian 10, SUSE Linux Enterprise Server 12 SP5, OpenSUSE 15.2, Debian 11, Ubuntu 22.04, Fedora 36, Fedora 37, SUSE Linux Enterprise Server 15 SP4, OpenSUSE 15.4, Red Hat Linux 8.7, Red Hat Linux 9.1

Microsoft Windows Operating Systems Supported

Windows 7, Windows 7 x64, Windows 8, Windows 8 x64, Windows Server 2012, Windows Server 2012 R2, Windows RT, Windows 10, Windows Server 2016, Windows Server 2019, Windows Server 2022, Windows 11

Novell Operating Systems Supported

Novell NetWare 6.5 Open Enterprise Server, Novell Open Enterprise Server 2 on SUSE Linux Enterprise Server 10 SP4, Novell Open Enterprise Server 11 on SUSE Linux Enterprise Server 11, Novell Open Enterprise Server 11 (SP3) on SuSE Linux Enterprise Server 12 SP1 (x86 and x64), Novell Open Enterprise Server 15 (SP1) on SuSE Linux Enterprise Server 11 SP4 (x86 and x64)

Included Paper Handling

550-Sheet Input, 100-Sheet Multipurpose Feeder, Integrated Duplex, 300-Sheet Output Bin

Optional Paper Handling

550-Sheet Tray

Paper Input Capacity, Standard

Do 650 pages 75 gsm bond

Paper Input Capacity, Maximum

Do 2850 pages 75 gsm bond

Paper Output Capacity, Standard

Do 300 pages 75 gsm bond

Paper Output Capacity, Maximum

Do 300 pages 75 gsm bond

Paper Weight Range Supported - Standard Tray (gsm)

60 - 218 gsm

Paper Weight Range Supported - Multipurpose Feeder (gsm)

60 - 218 gsm

Integrated Tray Card Stock Upper limit (grain long)

Index Bristol - 199 gsm (110 lb), Tag - 163 gsm (100 lb), Cover - 176 gsm (65 lb)

Integrated Tray Card Stock Upper limit (grain short)

Index Bristol - 199 gsm (110 lb), Cover - 216 gsm (80 lb), Tag - 203 gsm (125 lb)

Finishing Option

No

Number of Paper Inputs, Standard

2

Number of Paper Inputs, Maximum

6

Media Types Supported

Card Stock, Envelopes, Paper Labels, Plain Paper, Vinyl Labels, Banner Paper, Refer to the Paper & Specialty Media Guide

Media Sizes Supported

10 Envelope, 7 3/4 Envelope, 9 Envelope, A4, A5, B5 Envelope, C5 Envelope, DL Envelope, Executive, Folio, JIS-B5, Legal, Letter, Statement, Universal, Oficio, A6

Caster Base

No

Standard Connectivity

One Internal Card Slot, USB 2.0 Specification Hi-Speed Certified (Type B), Gigabit Ethernet (10/100/1000), Front USB 2.0 Specification Hi-Speed Certified port (Type A), Rear Hi-Speed USB port Compatible with USB 2.0 Specification (Type A)

Optional Network Ports

Internal MarkNet N8370 802.11b/g/n/a Wireless, NFC

Direct USB

Yes

Ethernet Network

Yes

Wireless

Wireless Option

Network Protocol Support

TCP/IP IPv4, TCP/IP IPv6, TCP, UDP, IPSEC w/ IPv4, IPSEC w/ IPv6, ICMP, IGMP

Network Printing Methods

LPR/LPD, Direct IP (Port 9100), Enhanced IP (Port 9400), Secure IP (Port 96xx), FTP, ThinPrint .print integration, IPP 1.0, 1.1, 2.0 (Internet Printing Protocol), Microsoft Web Services WSD, Pull Printing

Network Management Protocols¹

HTTP, HTTPS (SSL/TLS), SNMPv1, SNMPv2c, SNMPv3, WINS, IGMP, BOOTP, RARP, APIPA (AutoIP), DHCP, ICMP, DNS, DDNS, mDNS, ARP, NTP, Telnet, Finger,

Network Security

SNMPv3, 802.1x Authentication: MD5, MSCHAPv2, LEAP, PEAP, TLS, TTLS, Certificate Management, SSL Cipher Configuration, TCP/UDP Port Access Control, Security Port Lockdown, IPSEC Support (IPv4/IPv6)

Printable Area (metric)

4.2 mm of the top, bottom, right and left edges (within)

Printer Languages (Standard)

PCL 6 Emulation, Personal Printer Data Stream (PPDS), PostScript 3 Emulation, Direct Image, PDF 1.7 emulation, PCL 5

Fonts and Symbol Sets

158 scalable PostScript fonts, 39 scalable PPDS fonts, 5 PPDS bitmap fonts, For more information, refer to the Technical Reference., 89 scalable PCL 6 fonts, 2 PCL 6 bitmap fonts

Laser Cartridge Yields (up to)⁵

, 22,000-page Black High Yield Cartridge,
12,500-page Colour (CMY) Extra High Yield
Cartridges

Imaging Unit Estimated Yield

Do 150000 pages, based on 5 average
letter/A4 size pages per print job and ~ 5%
coverage for CS/CX96x, CX83x, CX95x, and
MX95x printer series, or based on 3 average
letter/A4 size pages per print job and ~ 5%
coverage for all other printers⁴

Cartridge(s) Shipping with Product

5,000-page Black and Colour (CMYK) Return
Programme Toner Cartridges

Replacement Cartridges:

Product functions only with replacement
cartridges designed for use in a specific
geographical region. See www.lexmark.com/
regions for more details.

Packaged Size (mm - H x W x D)

567 x 625 x 720 mm

Packaged Weight, kg

38.5 kg

Size (mm - H x W x D)

413 x 479 x 489 mm

Weight

32 kg

Noise level (Idle mode)

14 dBA

Noise Level (Print), Operating

53 dBA

Duplex Print Noise Level, Operating

55 dBA

Quiet Mode

47 dBA

ENERGY STAR

Yes

Average Power (Hibernate Mode)

0.1 watts

Average Power (Sleep Mode)

1 watts

Average Power (Ready Mode)

52 watts

Average Power (Printing)

740 watts

Average Power while Printing Duplex

610 watts

ENERGY STAR Typical Electricity**Consumption (TEC)**

0.65 kilowatt-hours per week

Product Guarantee

1-Year Onsite Service, Next Business Day

Product Certifications

ENERGY STAR, ICES-003 Class A, BSMI Class
A, VCCI Class A, FCC Class A, NOM-032, UL,
cUL, NOM, US FDA/CDRH, IEC 60825-1, CB
Report, ISO-532B, CE (EU) DoC, EFTA (CE), KC
logo, CCC, C-tick DoC, EuP, CECP, CEL, EC
1275/2008, ECMA-370, TED, SIL, TER, SABS,
UL-AR, GS Mark, Green Dot, ISO-9296, COC,
EPEAT, China Green Product (CGP), Mopria
Certified, Blue Angel / RAL-UZ 219

Maximum Monthly Duty Cycle

Do 150000 pages per month³

Recommended Monthly Page Volume

2000 - 20000 pages²

Specified Operating Environment

Humidity: 15 to 80% Relative Humidity,
Temperature: 10 to 32°C (50 to 90°F), Altitude:
0 - 2896 Metres (9,500 Feet)

License/Agreement Terms

Printers are sold subject to certain license/
agreement conditions. See www.lexmark.com/
printerlicense for details.

Country of Origin

China (PRC), Mexico

UNSPSC Code

43212105

¹This product includes software developed by the
OpenSSL Project for use in the OpenSSL Toolkit. ([http://
www.openssl.org/](http://www.openssl.org/))

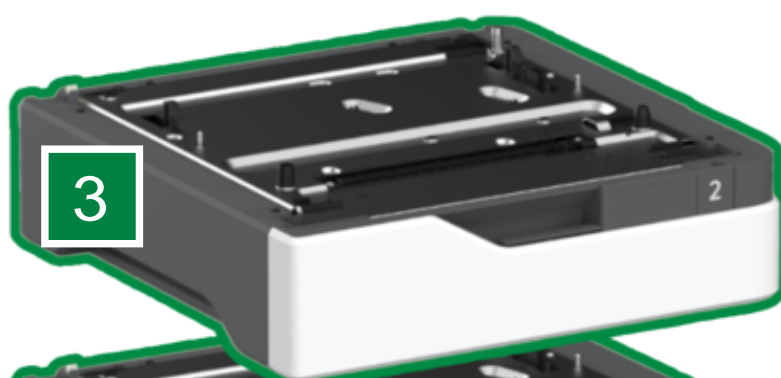
²"Recommended Monthly Page Volume" is a range of pages
that helps customers evaluate Lexmark's product offerings
based on the average number of pages customers plan to
print on the device each month. Lexmark recommends that
the number of pages per month be within the stated range
for optimum device performance, based on factors including:
supplies replacement intervals, paper loading intervals,
speed, and typical customer usage.

³"Maximum Monthly Duty Cycle" is defined as the maximum
number of pages a device could deliver in a month using a
multishift operation. This metric provides a comparison of
robustness in relation to other Lexmark printers and MFPs.

⁴Actual Yield may vary based on other factors such as device
speed, paper size and feed orientation, toner coverage, tray
source, percentage of black-only printing and average print
job complexity.

⁵Average continuous black or continuous composite CMY
declared cartridge yield up to this number of standard pages
in accordance with ISO/IEC 19798.

⁶Print and copy speeds measured in accordance with ISO/
IEC 24734 and ISO/IEC 24735 respectively (ESAT). For more
information see: www.lexmark.com/ISOspeeds.



P/N	Kertridži sa tonerom	P/N	Produžene garancije
71C0Z10	Lexmark CS/CX730, 735, C/XC4342, C/XC4352 Black 150K Imaging Unit	2372808	CS735 2-Year Renewal Onsite Repair, Response Time Next Business Day
71C0Z50	Lexmark CS/CX730, 735, C/XC4342, C/XC4352 Colour (CMY) 150K Imaging Unit	2372809	CS735 3-Year Renewal Onsite Repair, Response Time Next Business Day
71C0W00	Lexmark CS/CX730, 735, C/XC4342, C4352 170K Waste Container	2372810	CS735 4-Year Renewal Onsite Repair, Response Time Next Business Day
71C0H10	Lexmark CS730, 735, CX730 Black 22K Toner Cartridge	2372811	CS735 1-Year Post Warranty Onsite Repair Next Business Day
71C80C0	Lexmark CS/CX730, 735 Cyan Return Programme 5K Toner Cartridge	2372826	CS735 1-Year Parts Only Extended Warranty
71C80M0	Lexmark CS/CX730, 735 Magenta Return Programme 5K Toner Cartridge	2372827	CS735 2-Year Parts Only Extended Warranty
71C80Y0	Lexmark CS/CX730, 735 Yellow Return Programme 5K Toner Cartridge	2372828	CS735 3-Year Parts Only Extended Warranty
71C80K0	Lexmark CS/CX730, 735 Black Return Programme 5K Toner Cartridge	2372829	CS735 4-Year Parts Only Extended Warranty
71C8HK0	Lexmark CS730, 735, CX730 Black Return Programme 22K Toner Cartridge	2372830	CS735 5-Year Parts Only Extended Warranty
71C0X20	Lexmark CS735 Cyan 12.5K Toner Cartridge	2372832	CS735 1-Year Renewal Parts Only
71C0X30	Lexmark CS735 Magenta 12.5K Toner Cartridge	2372833	CS735 2-Year Renewal Parts Only
71C0X40	Lexmark CS735 Yellow 12.5K Toner Cartridge	2372834	CS735 3-Year Renewal Parts Only
71C8XC0	Lexmark CS735 Cyan Return Programme 12.5K Toner Cartridge	2372835	CS735 4-Year Renewal Parts Only
71C8XM0	Lexmark CS735 Magenta Return Programme 12.5K Toner Cartridge		
71C8XY0	Lexmark CS735 Yellow Return Programme 12.5K Toner Cartridge		

P/N	Manipulisanje papirom
40C2100	550-Sheet Tray

P/N	Nameštaj
40C2300	Adjustable Stand

P/N	Opcije memorije
27X0400	500+ GB Hard Disk
57X9528	Intelligent Storage Drive (ISD)
57X0070	Removable Hard Disk Enclosure Kit

P/N	Rešenja za aplikacije
57X0300	Contact Authentication Device
57X0301	Contactless Authentication Device
82S1204	Bar Code License
82S1203	IPDS License
57X0235	Contactless Front Solutions Module (Primary Choice)
57X0225	Desktop Contactless Reader

P/N	Povezivanje
27X6410	Lexmark MarkNet N8372 802.11 a/b/g/n/ac Wireless Print Server
27X0823	MarkNet N8370 Wireless for CS720, CS725, CX725
1021294	USB (2 Meter) Cable

P/N	Produžene garancije
2372801	CS735 1-Year Onsite Repair NBD Warranty
2372802	CS735 2-Year Onsite Repair NBD Warranty
2372803	CS735 3-Year Onsite Repair NBD Warranty
2372804	CS735 4-Year Onsite Repair NBD Warranty
2372805	CS735 5-Year Onsite Repair NBD Warranty
2372806	CS735 6-Year Onsite Repair NBD Warranty
2372807	CS735 1-Year Renewal Onsite Repair, Response Time Next Business Day